

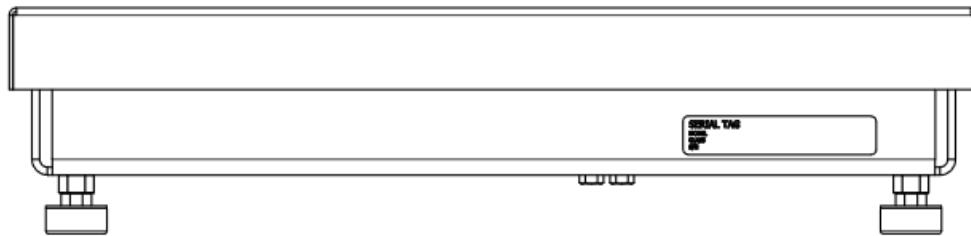


# **R5000 Series**

## **Silverback Bench Scale Platforms**

### **Generation Two**

## **Model PLB – R5000**



# **Amendment Record**

## **R5000 SERIES**

### **Silverback Bench Scale Platforms Generation Two Service / Installation Manual**

**Document 51641**

Manufactured by Fairbanks Scales Inc.

<b>Revision #</b>	<b>Date</b>	<b>Update</b>
Revision 1	08/23	Document release

## **Disclaimer**

Every effort has been made to provide complete and accurate information in this manual. However, although this manual may include a specifically identified warranty notice for the product, Fairbanks Scales makes no representations or warranties with respect to the contents of this manual, and reserves the right to make changes to this manual without notice when and as improvements are made.

Fairbanks Scales shall not be liable for any loss, damage, cost of repairs, incidental or consequential damages of any kind, whether or not based on express or implied warranty, contract, negligence, or strict liability arising in connection with the design, development, installation, or use of the scale.

### **© Copyright 2023**

This document contains proprietary information protected by copyright. All rights are reserved; no part of this manual may be reproduced, copied, translated or transmitted in any form or by any means without prior written permission of the manufacturer.

---

# Table of Contents

---

SECTION 1: INTRODUCTION & DESCRIPTION.....	5
SECTION 2: TECHNICAL SPECIFICATIONS .....	6
SECTION 3: INSTALLATION.....	7
SECTION 4: PARTS REPLACEMENT.....	8
SECTION 5: PARTS - 12" X 12" PLATFORMS.....	9
SECTION 6: PARTS - 12" X 16" PLATFORMS.....	13
SECTION 7: PARTS - 15" X 15" PLATFORMS.....	17
SECTION 8: PARTS - 16" X 18" PLATFORMS.....	21
SECTION 9: PARTS - 18" X 18" PLATFORMS.....	23
SECTION 10: PARTS - 18" X 24" PLATFORMS.....	29
SECTION 11: PARTS - 24" X 24" PLATFORMS.....	35
SECTION 12: TROUBLESHOOTING FLOW CHART.....	41

---

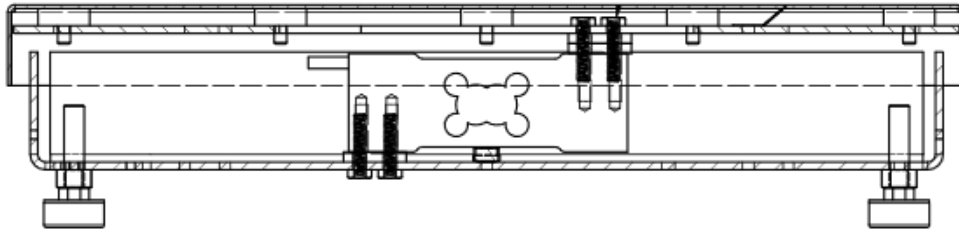
# Section 1: Introduction & Description

---

The R5000 Series analog platforms are constructed of mild steel with a black powder coat paint. There are a wide variety of application uses. These bench scales are designed for general purpose, industrial applications and warehousing because of their ruggedness and durable construction.

Certifications include:

- NTEP CC: 94-100
- MC: AM 5107 (100 lbs. & under)  
Am 5279 (over 100 lbs.)



## Section 2: Technical Specifications

Part Number	Platform Size	Capacity (lb)	Division Size			
			lb	oz	kg	g
39233	12" x 12"	25	25 x 0.01	400 x 0.2	11.3 x 0.005	11350 x 5
39234	12" x 12"	50	50 x 0.02	800 x 0.5	22.7 x 0.01	22700 x 10
39235	12" x 16"	100	100 x 0.02	800 x 0.5	22.7 x 0.01	22700 x 10
39236	12" x 16"	50	50 x 0.05	1600 x 1	45.4 x 0.02	45400 x 20
39237	15" x 15"	100	100 x 0.02	800 x 0.5	22.7 x 0.01	22700 x 10
39238	15" x 15"	50	50 x 0.05	1600 x 1	45.4 x 0.02	45400 x 20
39239	16" x 18"	100	100 x 0.05	1600 x 1	45.4 x 0.02	45400 x 20
39240	18" x 18"	100	100 x 0.05	1600 x 1	45.4 x 0.02	45400 x 20
39241	18" x 18"	250	250 x 0.1	4000 x 2	113 x 0.05	113500 x 50
39242	18" x 18"	500	500 x 0.2	8000 x 5	227 x 0.1	227000 x 100
39243	18" x 24"	100	100 x 0.05	1600 x 1	45.4 x 0.02	45400 x 20
39244	18" x 24"	250	250 x 0.1	4000 x 2	113 x 0.05	113500 x 50
39245	18" x 24"	500	500 x 0.2	8000 x 5	227 x 0.1	227000 x 100
39246	24" x 24"	100	100 x 0.05	1600 x 1	45.4 x 0.02	45400 x 20
39247	24" x 24"	250	250 x 0.1	4000 x 2	113 x 0.05	113500 x 50
39248	24" x 24"	500	500 x 0.2	8000 x 5	227 x 0.1	227000 x 100

---

## Section 3: Installation

---

The platforms are shipped ready to interface to an analog instrument. Refer to the table below for wiring color codes.

1. Place the platform where it will be used.
2. Level the platform using the feet.
3. Connect the interface cable to the instrument. The load cell interface cable is identified as follows:

### Platform Wiring

Platforms (by part #)	+ Excitation	- Excitation	+ Signal	- Signal
39233 through 39241	<b>Green</b>	<b>Black</b>	White	<b>Red</b>

Platforms (by part #)	+ Excitation	- Excitation	+ Signal	- Signal	+ Sense	- Sense
39242 through 39248	<b>Green</b>	<b>Black</b>	<b>Red</b>	White	<b>Blue</b>	<b>Brown</b>

---

# Section 4: Parts Replacement


---

## 4.1. LOAD CELL REPLACEMENT

### Tools required:

- Open-end wrench
- Side cutter
- Torque wrench

### Procedure:

1. Disconnect the instrument from the power supply.
2. Place the platform upright without the cover.
3. Remove the bolts holding the load cell and spacer in place.
4. Remove the load cell and cable **and note the cell and cable placement!**
5. Install the new load cell and the spacer(s).
6. Tighten the load cell mounting bolts to 150 INCH/LBS of torque. (See   
*in drawing below*)

For the **24" x 24" platform (only)**, tighten Support Plate Bolts to 120

INCH/LBS of torque. (See   
*in drawing below*)

7. Route the load cell cable exactly as the original cable and plug in the connector.
8. Calibrate the instrument.

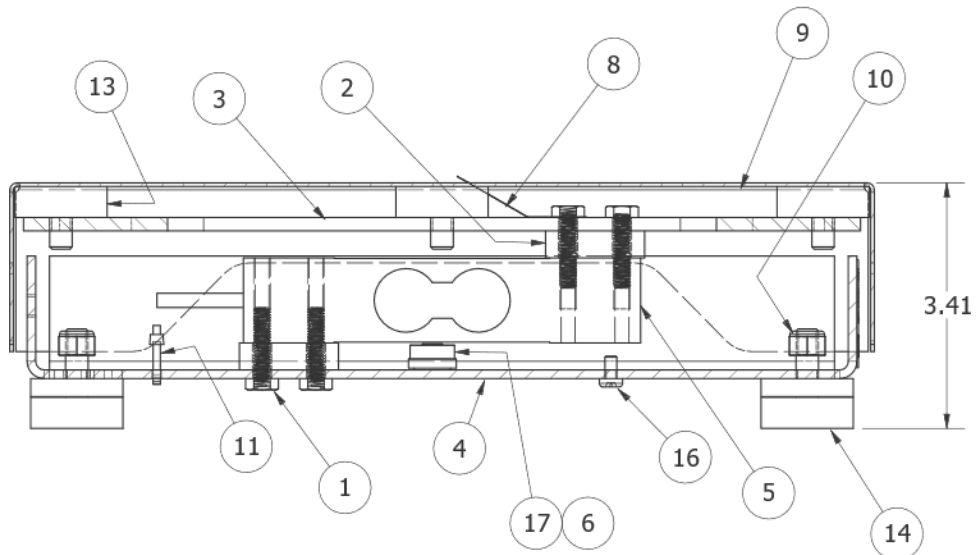
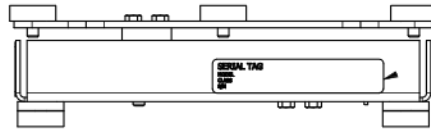
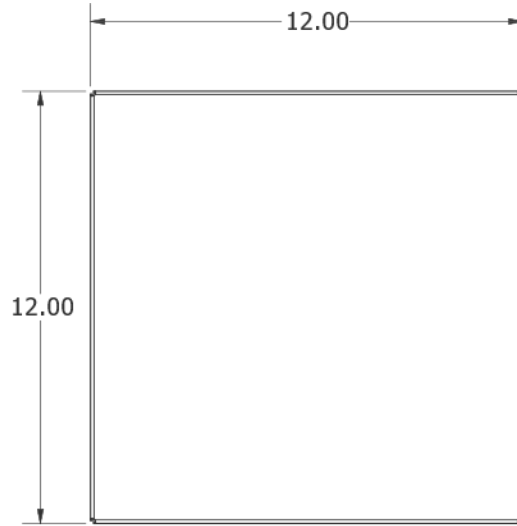


## Section 5: Parts - 12" x 12" Platforms

### 5.1. P/N 39233 (25 LB. CAPACITY) - PARTS LIST

Item	Qty	Part No.	Description
1	4	39372	SCREW, CAP, HEX HD. SS, M6xl x 25mm LONG
2	2	39371	SHIM, LOAD CELL, SS, 0.375" THICK FOR 0.25" ON 0.750" C-T-C
3	1	39256	SPIDER, PLATFORM, 12 X 12, MS, 5000d
4	1	39249	BASE, PLATFORM, 12" X 12", MS, 5000d
5	1	39203	LOADCELL, FLINTEC PC3 SINGLE POINT, METRIC, 30 KG
6	1	38235	ADHESIVE DOT, 3M VHB .5" CIRCLE
8	1	24406	CLIP, GROUND
9	1	23977	COVER, PLATFORM, 12 X 12
10	4	22963	STOP NUT, MS, SS
11	1	17613	TIE, WIRE, 4"
13	6	14233	Foot-125x43x87-m14233
14	4	12777	Foot-125x43x138-m12777
16	1	11134	SCREW, PH, PHIL 8-32 X .312 SS
17	1	11039	Bubble Level

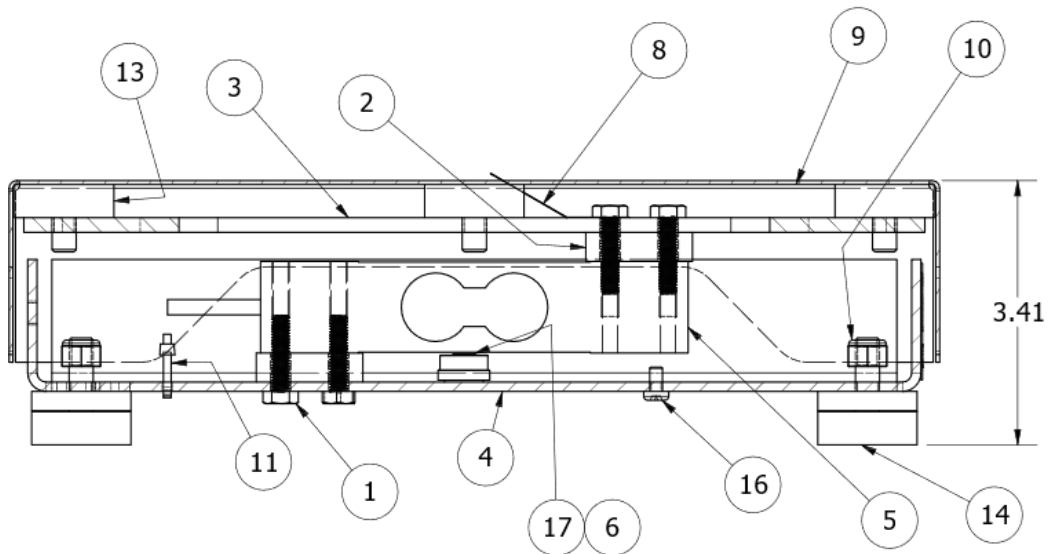
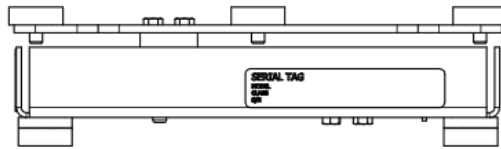
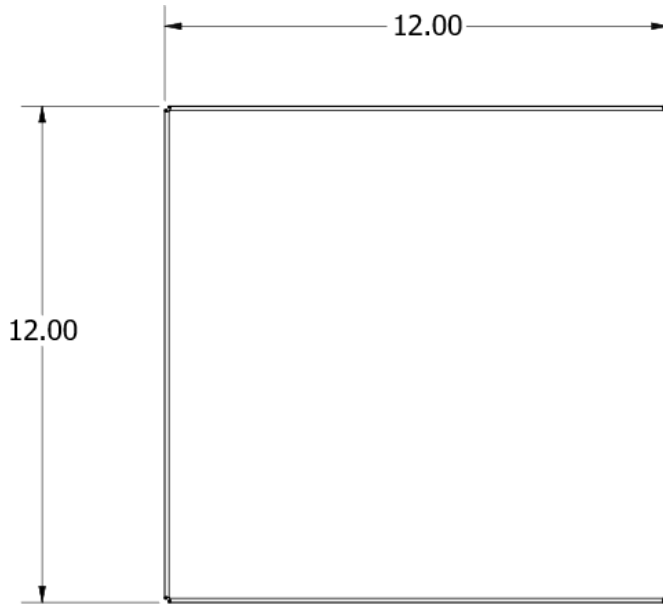
## 5.2. P/N 39233 (25 LB. CAPACITY) - PARTS DIAGRAM



### 5.3. P/N 39234 (50 LB. CAPACITY) - PARTS LIST

Item	Qty	Part No.	Description
1	4	39372	SCREW, CAP, HEX HD. SS, M6xl x 25mm LONG
2	2	39371	SHIM, LOAD CELL, SS, 0.375" THICK
3	1	39256	SPIDER, PLATFORM, 12 X 12, MS, 5000d
4	1	39249	BASE, PLATFORM, 12" X 12", MS, 5000d
5	1	39203	LOADCELL, FLINTEC PC3 SINGLE POINT, METRIC, 30 KG
6	1	38235	ADHESIVE DOT, 3M VHB .5" CIRCLE
8	1	24406	CLIP, GROUND
9	1	23977	COVER, PLATFORM, 12 X 12
10	4	22963	STOP NUT, M8, SS
11	1	17613	TIE, WIRE, 4"
13	6	14233	Foot-125x43x87-m14233
14	4	12777	Foot-125x43x138-m12777
16	1	11134	SCREW, PH, PHIL 8-32 X .312 SS
17	1	11039	Bubble Level

### 5.4. P/N 39234 (50 LB. CAPACITY) – PARTS DIAGRAM

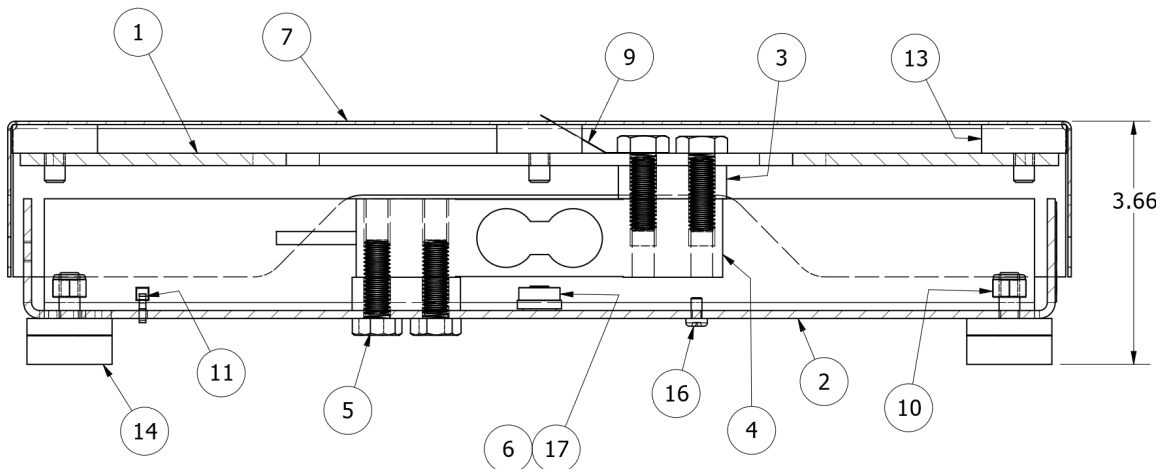
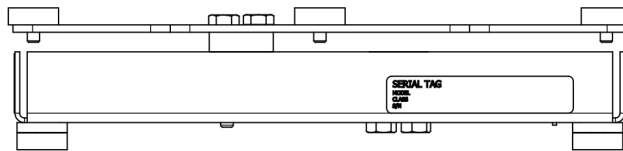
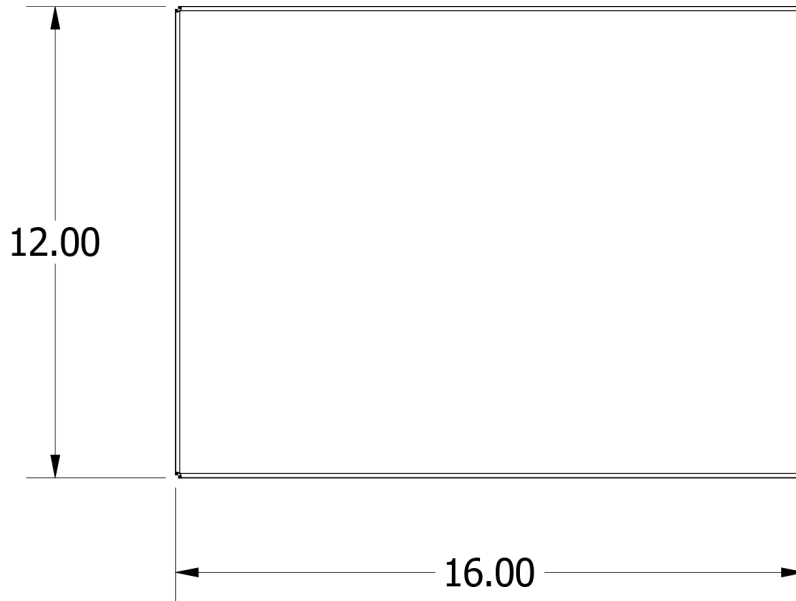


## Section 6: Parts - 12" x 16" Platforms

### 6.1. P/N 39235 (100 LB CAPACITY) – PARTS LIST

Item	Qty	Part No.	Description
1	1	39257	SPIDER, PLATFORM, 12 X 16, MS, 5000d
2	1	39250	BASE, PLATFORM, 12" X 16", MS, 5000d
3	2	39207	SHIM, LOAD CELL, SS, 0.500" THICK FOR MI0 ON 0.882" C-T-C
4	1	39205	LOADCELL, FLINTEC PC3 SINGLE POINT, METRIC, 100 KG
5	4	39200	SCREW, CAP, HEX HEAD, SS, MI0-1.5 X 30mm LONG
6	1	38235	ADHESIVE DOT, 3M VHB .5" CIRCLE
7	1	38181	COVER, PLATFORM, 12 X 16
9	1	24406	CLIP, GROUND
10	4	22963	STOP NUT, MS, SS
11	1	17613	TIE, WIRE, 4"
13	6	14233	Foot-125x43x87-m14233
14	4	12777	Foot-125x43x138-m12777
16	1	11134	SCREW, PH, PHIL 8-32 X .312 SS
17	1	11039	Bubble Level-11039

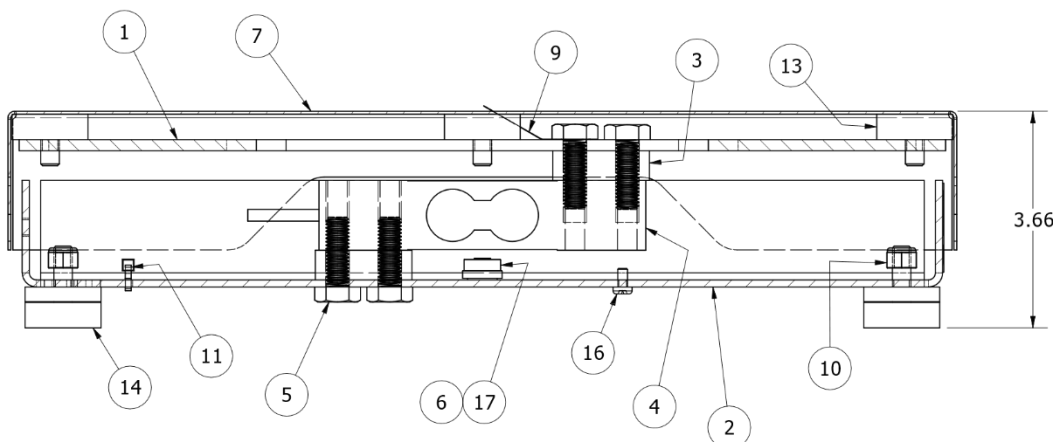
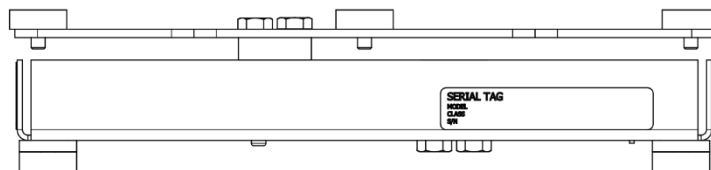
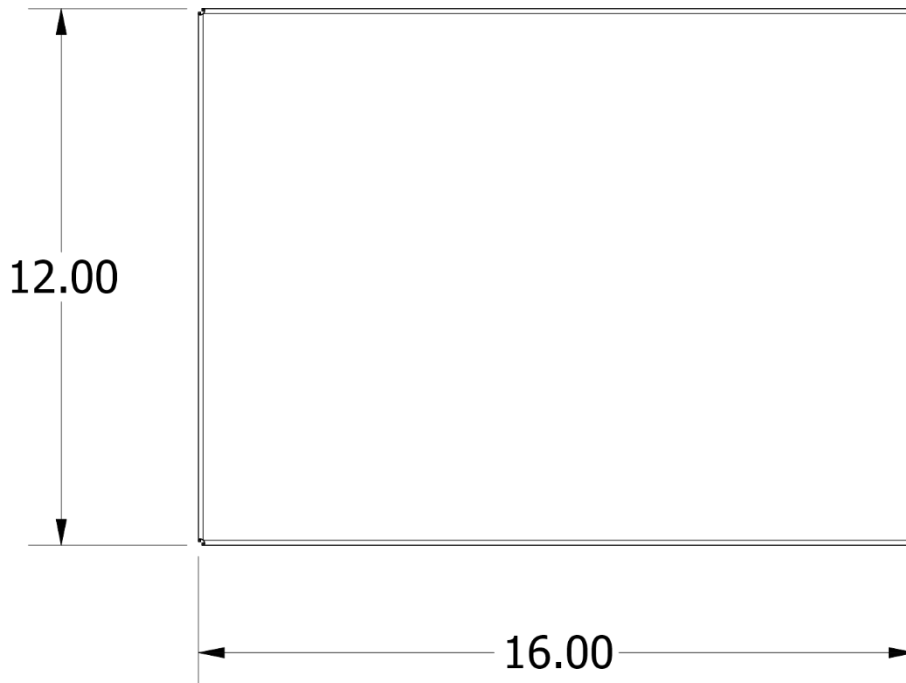
## 6.2. P/N 39235 (100 LB CAPACITY) – PARTS DIAGRAM



## 6.3. P/N 39236 (50 LB CAPACITY) – PARTS LIST

Item	Qty	Part No.	Description
1	1	39257	SPIDER, PLATFORM, 12 X 16, MS, 5000d
2	1	39250	BASE, PLATFORM, 12" X 16", MS, 5000d
3	2	39207	SHIM, LOAD CELL, SS, 0.500" THICK FOR M10 ON 0.882" C-T-C
4	1	39205	LOADCELL, FLINTEC PC3 SINGLE POINT, METRIC, 100 KG
5	4	39200	SCREW, CAP, HEX HEAD, SS, M10-1.5 X 30mm LONG
6	1	38235	ADHESIVE DOT, 3M VHB .5" CIRCLE
7	1	38181	COVER, PLATFORM, 12 X 16
9	1	24406	CLIP, GROUND
10	4	22963	STOP NUT, MS, SS
11	1	17613	TIE, WIRE, 4"
13	6	14233	Foot-125x43x87-m14233
14	4	12777	Foot-125x43x138-m12777
16	1	11134	SCREW, PH, PHIL 8-32 X .312 SS
17	1	11039	Bubble Level-11039

### 6.4. P/N 39236 (50 LB CAPACITY) – PARTS DIAGRAM



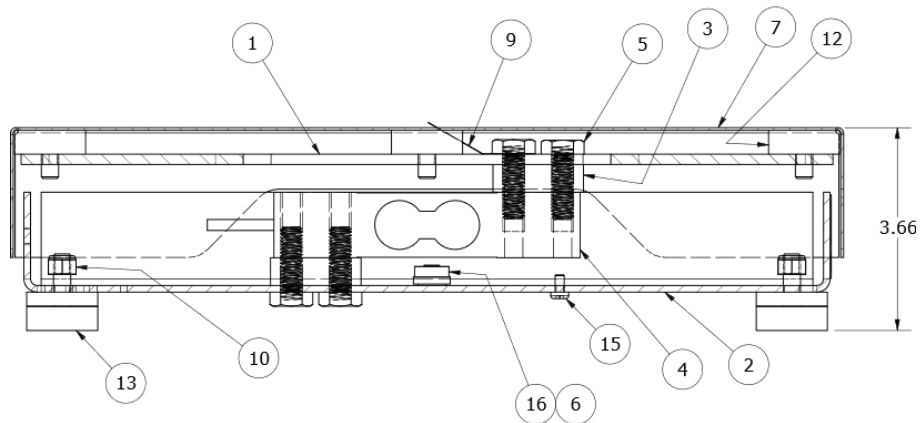
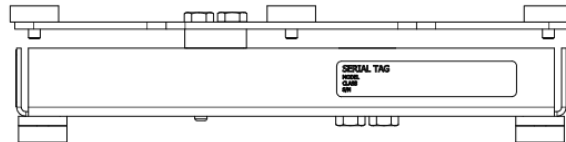
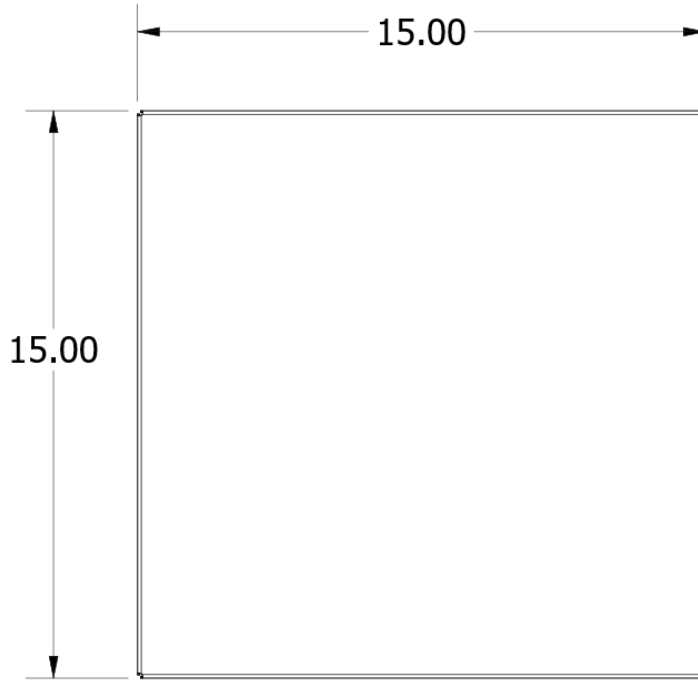


## Section 7: Parts - 15" x 15" Platforms

### 7.1. P/N 39237 (100 LB CAPACITY) – PARTS LIST

Item	Qty.	Part No.	Description
1	1	39258	SPIDER, PLATFORM, 15 X 15, MS, 5000d
2	1	39251	BASE, PLATFORM, 15 X 15, MS, 5000d
3	2	39207	SHIM, LOAD CELL, SS, 0.500" THICK FOR MI0 ON 0.882" C-T-C
4	1	39205	LOADCELL, FLINTEC PC3 SINGLE POINT, METRIC, 100 KG
5	4	39200	SCREW, CAP, HEX HEAD, SS, MI0-1.5 X 30mm LONG
6	1	38235	ADHESIVE DOT, 3M VHB .5" CIRCLE
7	1	38200	COVER, PLATFORM, 15 X 15
9	1	24406	CLIP, GROUND
10	4	22963	STOP NUT, MS, SS
12	6	14233	Foot-125x43x87-m14233
13	4	12777	Foot-125x43x138-m12777
15	1	11134	SCREW, PH, PHIL 8-32 X .312 SS
16	1	11039	Bubble Level-11039

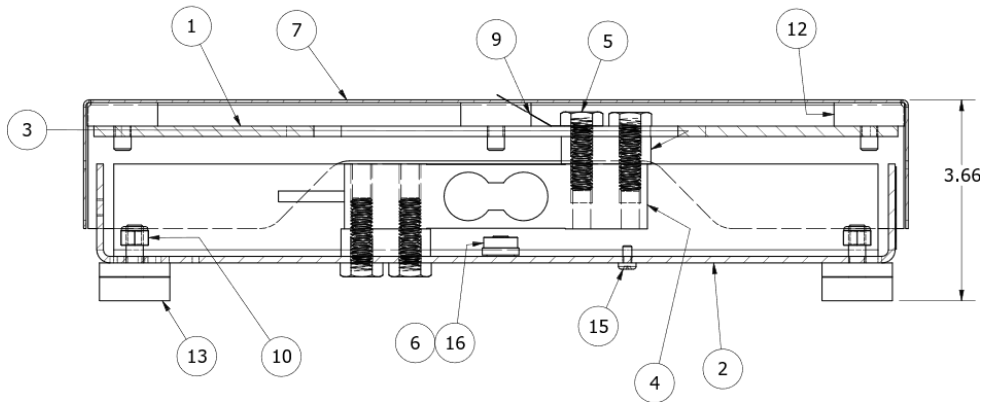
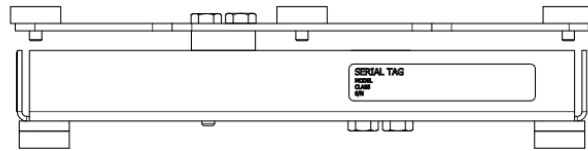
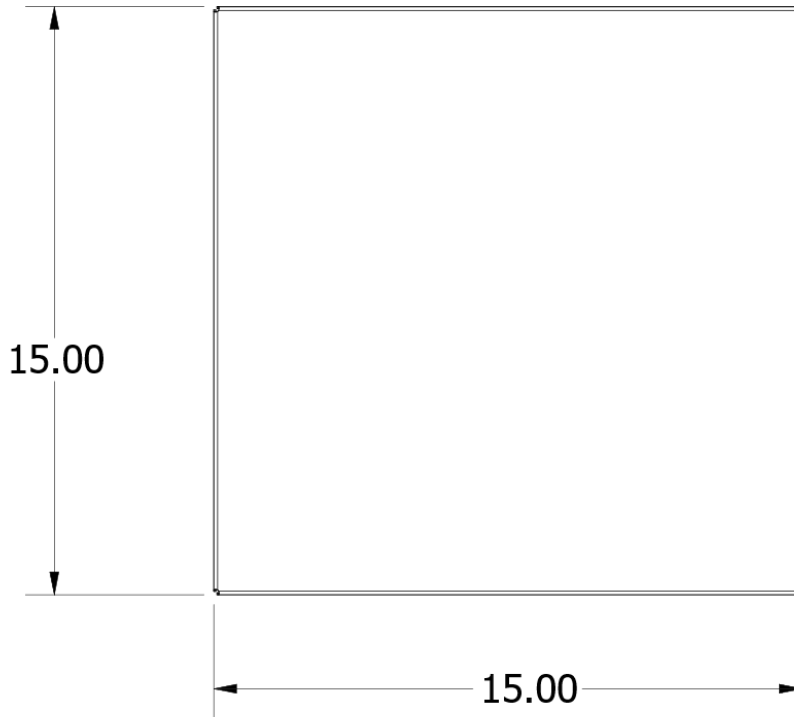
## 7.2. P/N 39237 (100 LB CAPACITY) – PARTS DIAGRAM



### 7.3. P/N 39238 (50 LB CAPACITY) – PARTS LIST

Item	Qty.	Part No.	Description
1	1	39258	SPIDER, PLATFORM, 15 X 15, MS, 5000d
2	1	39251	BASE, PLATFORM, 15 X 15, MS, 5000d
3	2	39207	SHIM, LOAD CELL, SS, 0.500" THICK FOR MI0 ON 0.882" C-T-C
4	1	39205	LOADCELL, FLINTEC PC3 SINGLE POINT, METRIC, 100 KG
5	4	39200	SCREW, CAP, HEX HEAD, SS, MI0-1.5 X 30mm LONG
6	1	38235	ADHESIVE DOT, 3M VHB .5" CIRCLE
7	1	38200	COVER, PLATFORM, 15 X 15
9	1	24406	CLIP, GROUND
10	4	22963	STOP NUT, MS, SS
12	6	14233	Foot-125x43x87-ml4233
13	4	12777	Foot-125x43x138-m12777
15	1	11134	SCREW, PH, PHIL 8-32 X .312 SS
16	1	11039	Bubble Level-11039

### 7.4. P/N 39238 (50 LB CAPACITY) – PARTS DIAGRAM

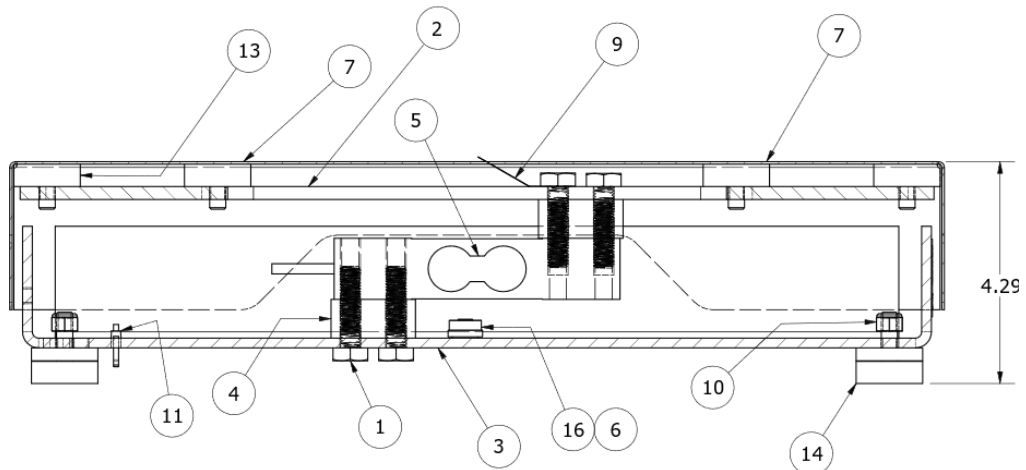
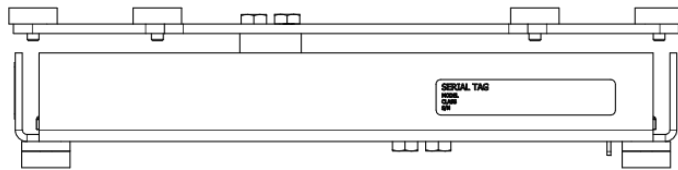
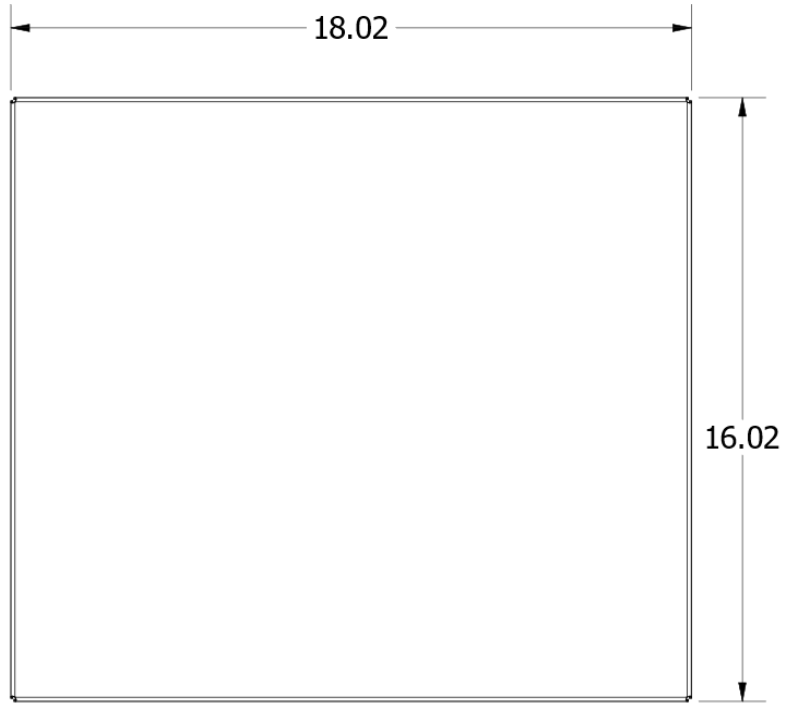


# Section 8: Parts - 16" x 18" Platforms

## 8.1. P/N 39239 (100 LB. CAPACITY) – PARTS LIST

Item	Qty.	Part No.	Description
1	4	39367	SCREW, CAP, HEX HD. STAINLESS STEEL, M10-1.5 X 40mm LONG
2	1	39259	SPIDER, PLATFORM, 16 X 18, MS, 5000d
3	1	39252	BASE, PLATFORM, 16" X 18", MS, 5000d
4	2	39208	SHIM, LOAD CELL, SS, 0.750" THICK FOR M10 ON 0.882" C-T-C
5	1	39205	LOADCELL, FLINTEC PC3 SINGLE POINT, METRIC, 100 KG
6	1	38235	ADHESIVE DOT, 3M VHB .5" CIRCLE
7	1	38208	COVER, PLATFORM, 16 X 18
9	1	24406	CLIP, GROUND
10	4	22963	STOP NUT, M8, SS
11	1	17613	TIE, WIRE, 4"
13	6	14233	Foot-125x43x87-m14233
14	4	12777	Foot-125x43x138-m12777
16	1	11039	Bubble Level

## 8.2. P/N 39239 (100 LB CAPACITY) – PARTS DIAGRAM

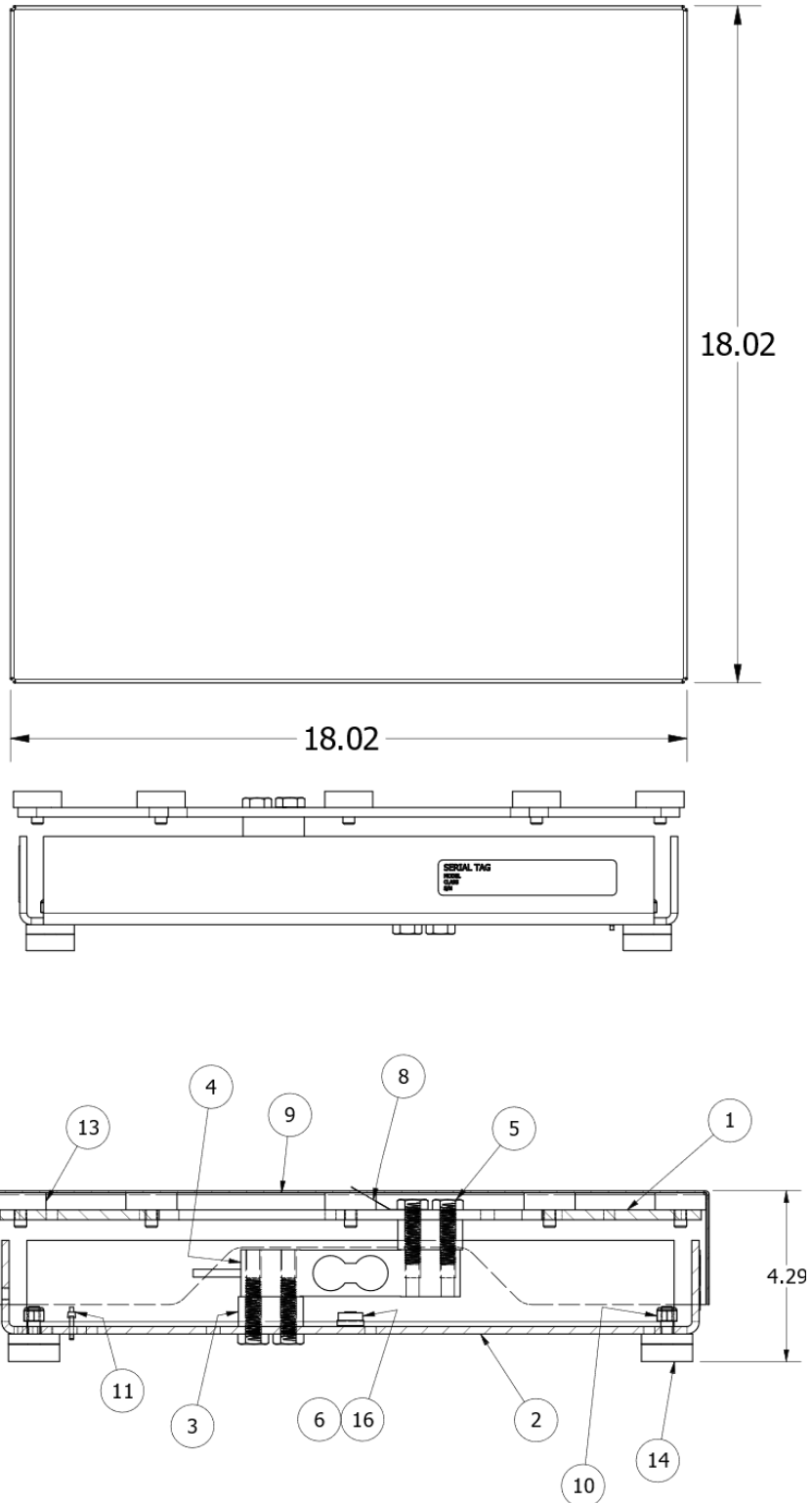


# Section 9: Parts - 18" x 18" Platforms

## 9.1. P/N 39240 (100 LB. CAPACITY) – PARTS LIST

Item	Qty.	Part No.	Description
1	1	39260	SPIDER, PLATFORM, 18 X 18, MS, 5000d
2	1	39253	BASE, PLATFORM, 18" X 18", MS, 5000d
3	2	39208	SHIM, LOAD CELL, SS, 0.750" THICK FOR MI0 ON 0.882" C-T-C
4	1	39205	LOADCELL, FLINTEC PC3 SINGLE POINT, METRIC, 100 KG
5	4	39202	SCREW, CAP, HEX HEAD, SS, MI0-1.5 X 35mm LONG
6	1	38235	ADHESIVE DOT, 3M VHB .5" CIRCLE
8	1	24406	CLIP, GROUND
9	1	23548	COVER, PLATFORM, 18X18
10	4	22963	STOP NUT, MS, SS
11	1	17613	TIE, WIRE, 4"
13	8	14233	Foot-125x43x87-m14233
14	4	12777	Foot-125x43x138-m12777
16	1	11039	Bubble Level

## 9.2. P/N 39240 (100 LB. CAPACITY) – PARTS DIAGRAM

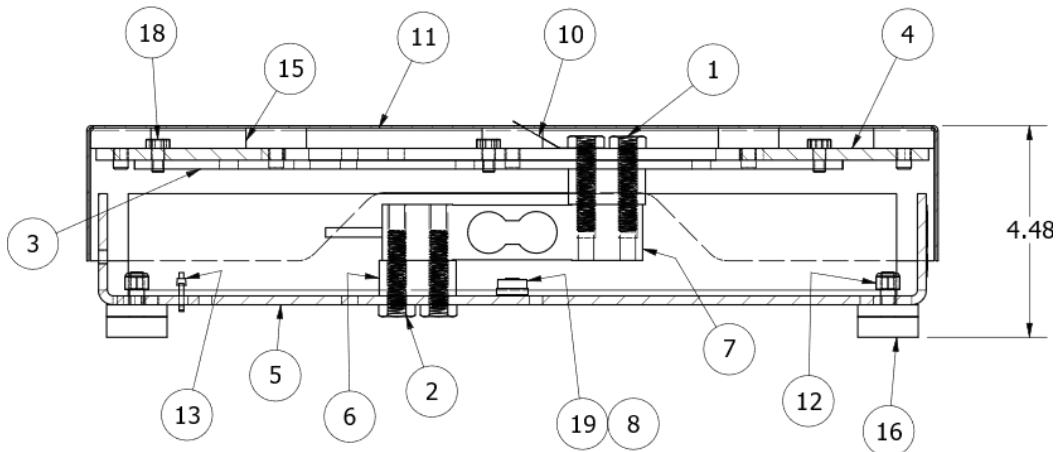
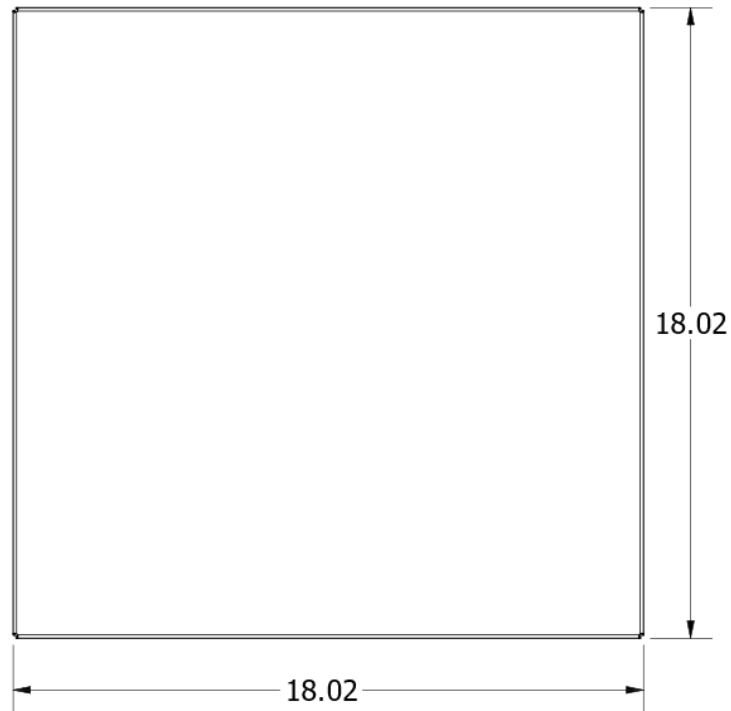




### 9.3. P/N 39241 (250 LB. CAPACITY) – PARTS LIST

Item	Qty.	Part No.	Description
1	2	39368	SCREW, CAP, HEX HD. SS, M10-1.5 X 45mm LONG
2	2	39367	SCREW, CAP, HEX HD. SS, M10-1.5 X 40mm LONG
3	1	39305	PLATE, SUPPORT, FOR MS 18x18, 5000D
4	1	39260	SPIDER, PLATFORM, 18 X 18, MS, 5000d
5	1	39253	BASE, PLATFORM, 18" X 18", MS, 5000d
6	2	39208	SHIM, LOAD CELL, SS, 0.750" THICK FOR M10 ON 0.882" C-T-C
7	1	39206	LOADCELL, FLINTEC PC3 SINGLE POINT, METRIC, 150 KG
8	1	38235	ADHESIVE DOT, 3M VHB .5" CIRCLE
10	1	24406	CLIP, GROUND
11	1	23548	COVER, PLATFORM, 18X18
12	4	22963	STOP NUT, M8, SS
13	1	17613	TIE, WIRE, 4"
15	8	14233	Foot-125x43x87-m14233
16	4	12777	Foot-125x43x138-m12777
18	6	11066	SCREW, HEX, 1/4-20 X .50", SS
19	1	11039	Bubble Level

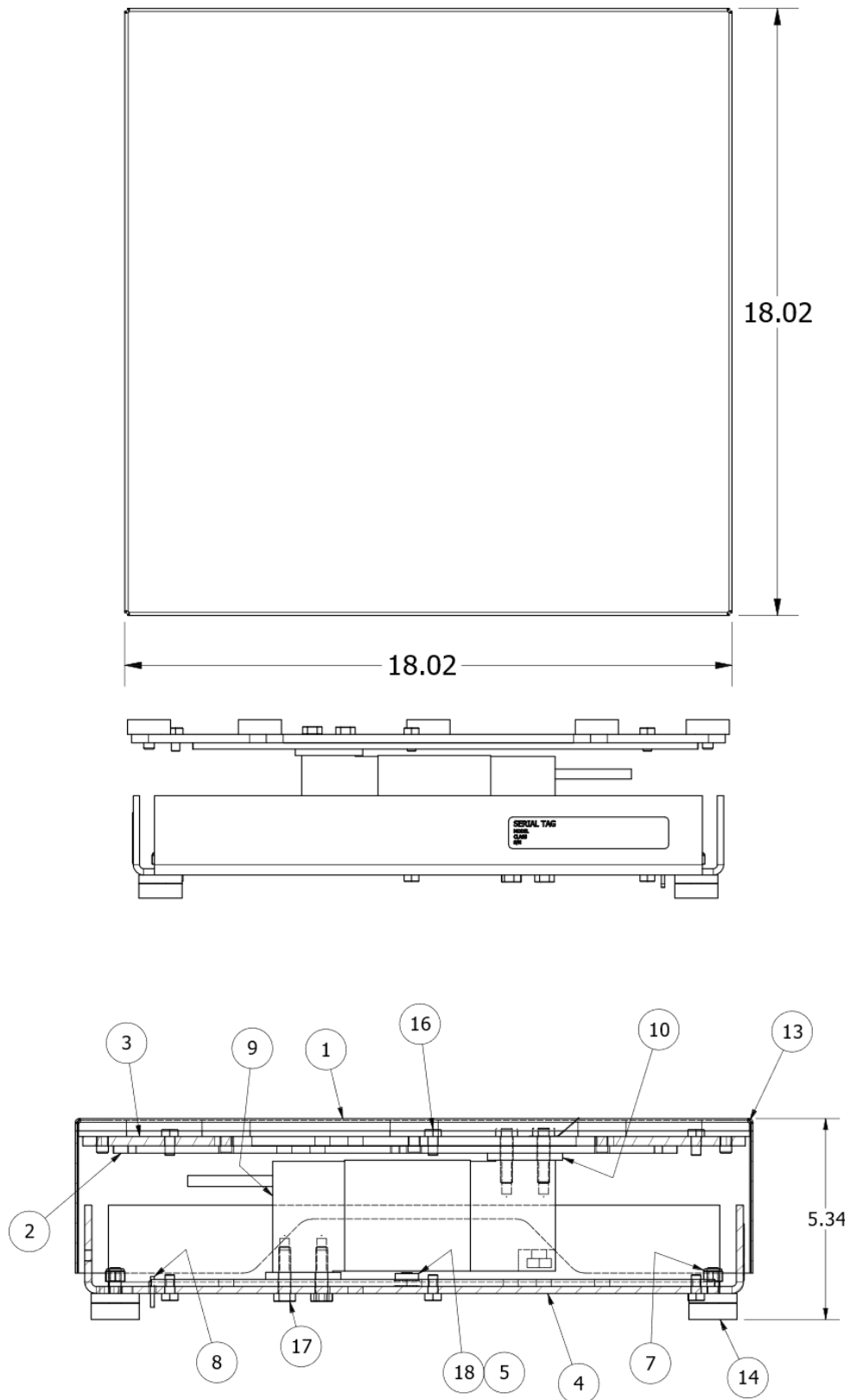
# 9.4. P/N 39241 (250 LB. CAPACITY) – PARTS DIAGRAM



## 9.5. P/N 39242 (500 LB. CAPACITY) – PARTS LIST

Item	Qty.	Part No.	Description
1	1	39370	COVER, PLATFORM, 18X18, DEEP
2	2	39305	PLATE, SUPPORT, FOR MS 18x18, 5000D
3	1	39260	SPIDER, PLATFORM, 18 X 18, MS, 5000d
4	1	39253	BASE, PLATFORM, 18" X 18", MS, 5000d
5	1	38235	ADHESIVE DOT, 3M VHB .5" CIRCLE
7	4	22963	STOP NUT, MS, SS
8	1	17613	TIE, WIRE, 4"
9	1	15836	LOADCELL - 300 KG
10	2	15830	SPACER, SS LOADCELL
12	1	15017	CLIP,GROUND H500x'S
13	8	14233	Foot-125x43x87-m14233
14	4	12777	Foot-125x43x138-m12777
16	12	11066	SCREW, HEX, 1/4-20 X .50", SS
17	8	11049	SCREW, HEX, 5/16-18 x 1.25", SS
18	1	11039	Bubble Level

### 9.6. P/N 39242 (500 LB. CAPACITY) – PARTS DIAGRAM



---

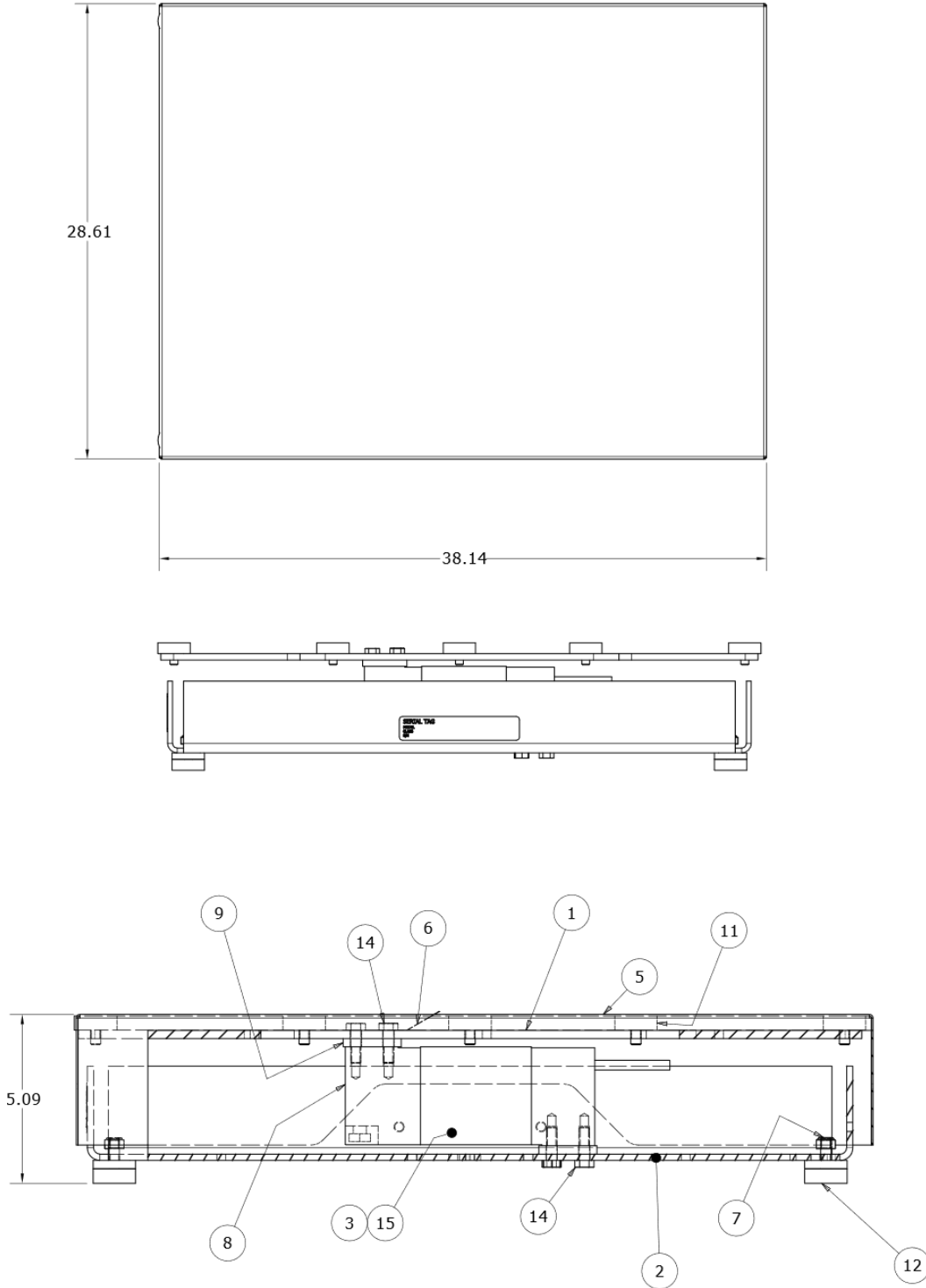
# Section 10: Parts - 18" x 24" Platforms

---

## 10.1. P/N 39243 (100 LB. CAPACITY) – PARTS LIST

Item	Qty.	Part No.	Description
1	1	39261	SPIDER, PLATFORM, MS 18X24, 5000d
2	1	39254	BASE, PLATFORM, MS 18X24, 5000d
3	1	38235	ADHESIVE DOT, 3M VHB .5" CIRCLE
5	1	24429	COVER, PLATFORM
6	1	24406	CLIP, GROUND
7	4	22963	STOP NUT, MS, SS
8	1	15835	LOADCELL - 150 KG
9	2	15831	SPACER, LOADCELL
11	8	14233	FOOT SCB-R9000-14
12	4	12777	FOOT MS X 1.25 45-70XX Black Rubber
14	8	11050	HH SCREW, 5/16-18 X 1 SS
15	1	11039	Bubble Level

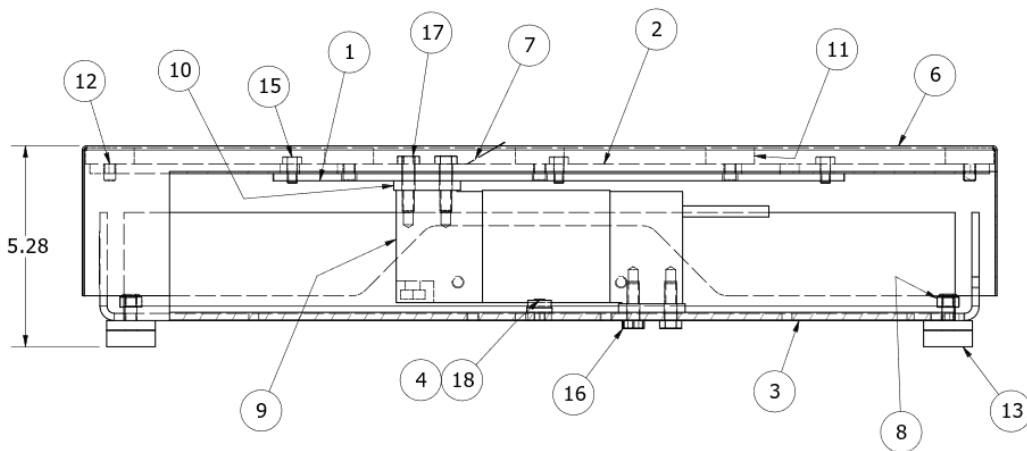
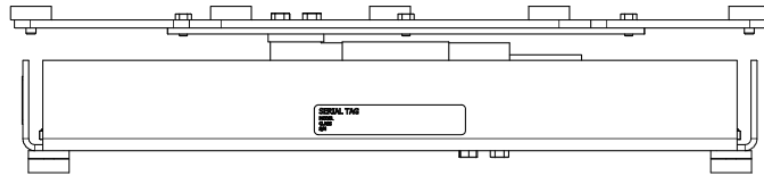
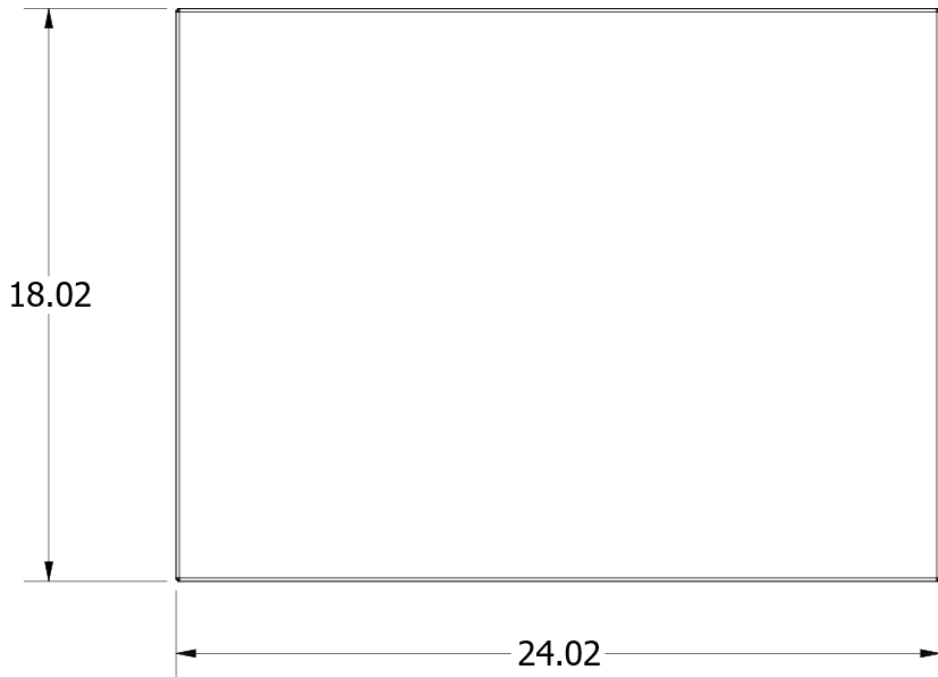
## 10.2. P/N 39243 (100 LB. CAPACITY) – PARTS DIAGRAM



### 10.3. P/N 39244 (250 LB. CAPACITY) – PARTS LIST

Item	Qty.	Part No.	Description
1	1	39305	PLATE, SUPPORT, FOR MS 18x18, 5000D
2	1	39261	SPIDER, PLATFORM, MS 18X24, 5000d
3	1	39254	BASE, PLATFORM, MS 18X24, 5000d
4	1	38235	ADHESIVE DOT, 3M VHB .5" CIRCLE
6	1	24429	COVER, PLATFORM
7	1	24406	CLIP, GROUND
8	4	22963	STOP NUT, MS, 55
9	1	15835	LOADCELL - 150 KG
10	2	15831	SPACER, LOADCELL
12	8	14233	Foot-125x43x87-m14233
13	4	12777	Foot-125x43x138-m12777
15	6	11066	SCREW, HEX, 1/4-20 X .50", 55
16	4	11050	SCREW, HEX, 5/16-18 X 1", 55
17	4	11049	SCREW, HEX, 5/16-18 X 1.25", 55
18	1	11039	Bubble Level

### 10.4. P/N 39244 (250 LB. CAPACITY) – PARTS DIAGRAM

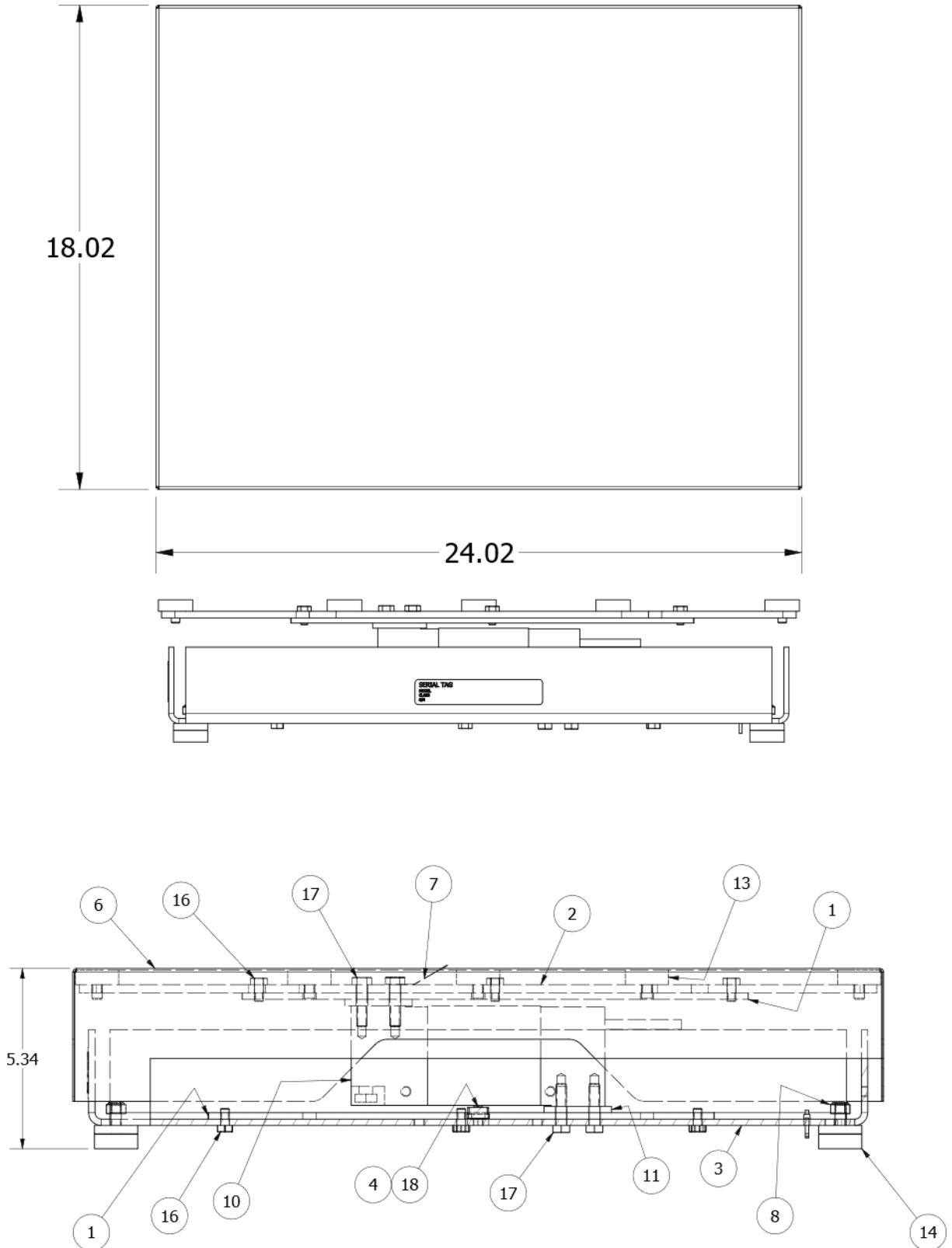




## 10.5. P/N 39245 (500 LB. CAPACITY) – PARTS LIST

Item	Qty.	Part No.	Description
1	1	39305	PLATE, SUPPORT, FOR MS 18x18, 5000D
2	1	39261	SPIDER, PLATFORM, MS 18X24, 5000d
3	1	39254	BASE, PLATFORM, MS 18X24, 5000d
4	1	38235	ADHESIVE DOT, 3M VHB .5" CIRCLE
6	1	24429	COVER, PLATFORM
7	1	24406	CLIP, GROUND
8	4	22963	STOP NUT, MS, 55
9	1	15835	LOADCELL - 150 KG
10	2	15831	SPACER, LOADCELL
12	8	14233	Foot-125x43x87-m14233
13	4	12777	Foot-125x43x138-m12777
15	6	11066	SCREW, HEX, 1/4-20 X .50", 55
16	4	11050	SCREW, HEX, 5/16-18 X 1", 55
17	4	11049	SCREW, HEX, 5/16-18 X 1.25", 55
18	1	11039	Bubble Level

# 10.6. P/N 39245 (500 LB. CAPACITY) – PARTS DIAGRAM

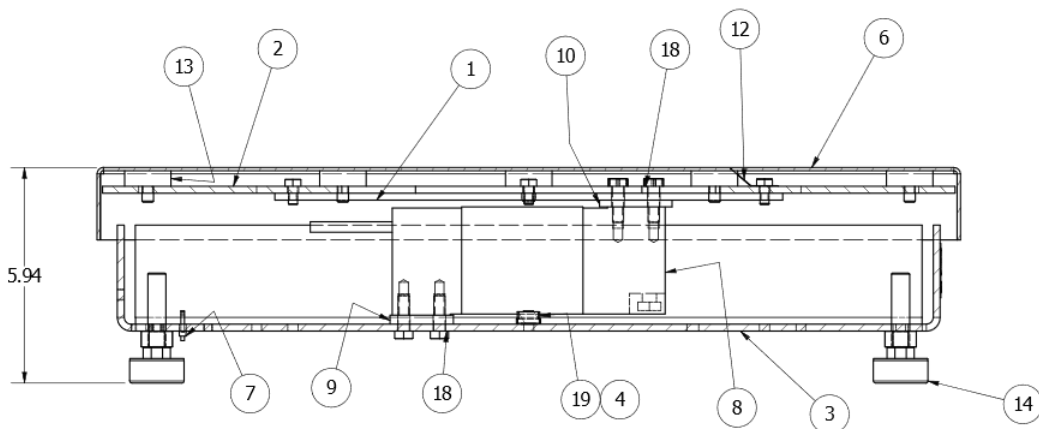
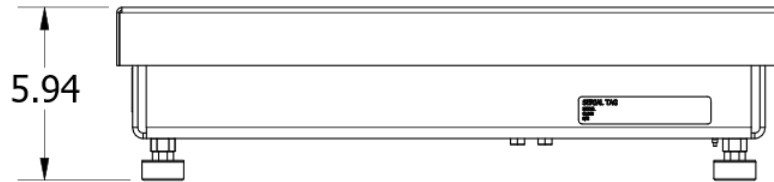
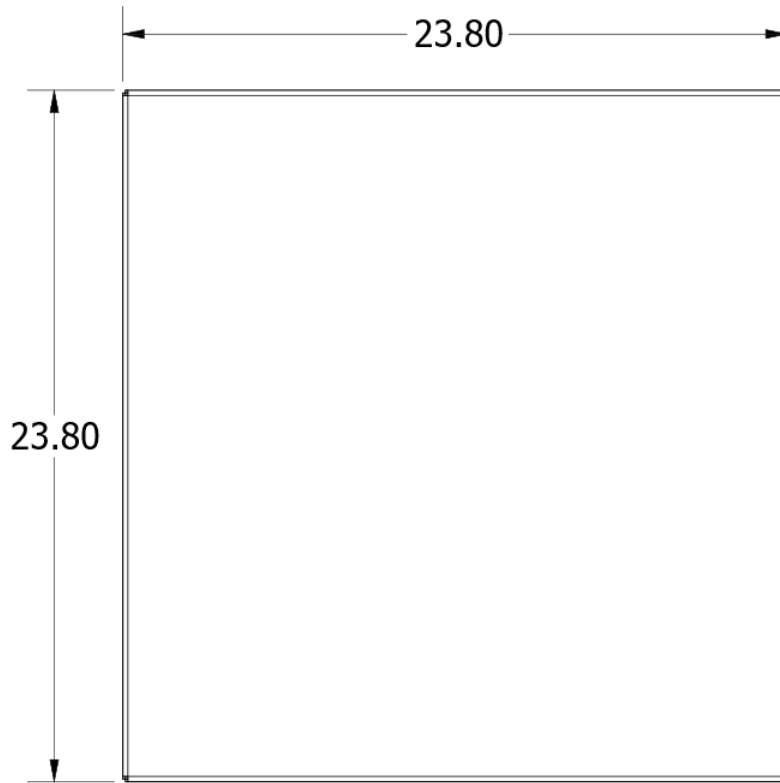


# Section 11: Parts - 24" x 24" Platforms

## 11.1. P/N 39246 (100 LB. CAPACITY) – PARTS LIST

Item	Qty.	Part No.	Description
1	1	39309	PLATE, SUPPORT, 24x24 MS, 5000D, 0.19" THICK
2	1	39262	SPIDER, PLATFORM, 24X24 MS, 5000d
3	1	39255	BASE, PLATFORM, 24X24 MS, 5000d
4	1	38235	ADHESIVE DOT, 3M VHB .5" CIRCLE
6	1	24448	COVER
7	1	17613	TIE, WIRE, 4"
8	1	15835	LOADCELL - 150 KG
9	1	15831	SPACER, LOADCELL
10	1	15830	SPACER, SS LOADCELL
12	1	15017	CLIP,GROUND H500x'S
13	10	14233	Foot-125x43x87-m14233
14	4	11480	FOOT SUB ASSY, 1/2-13 SS
16	4	11101	NUT, HEX, 1/2-13, SS
17	8	11066	SCREW, HEX, 1/4-20 X .50", SS
18	8	11050	SCREW, HEX, 5/16-18 X 1.00", SS
19	1	11039	Bubble Level

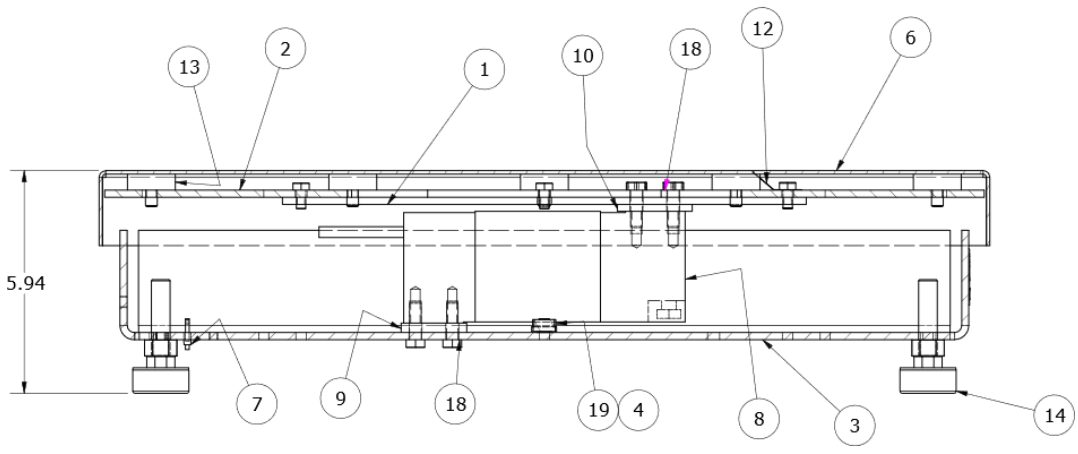
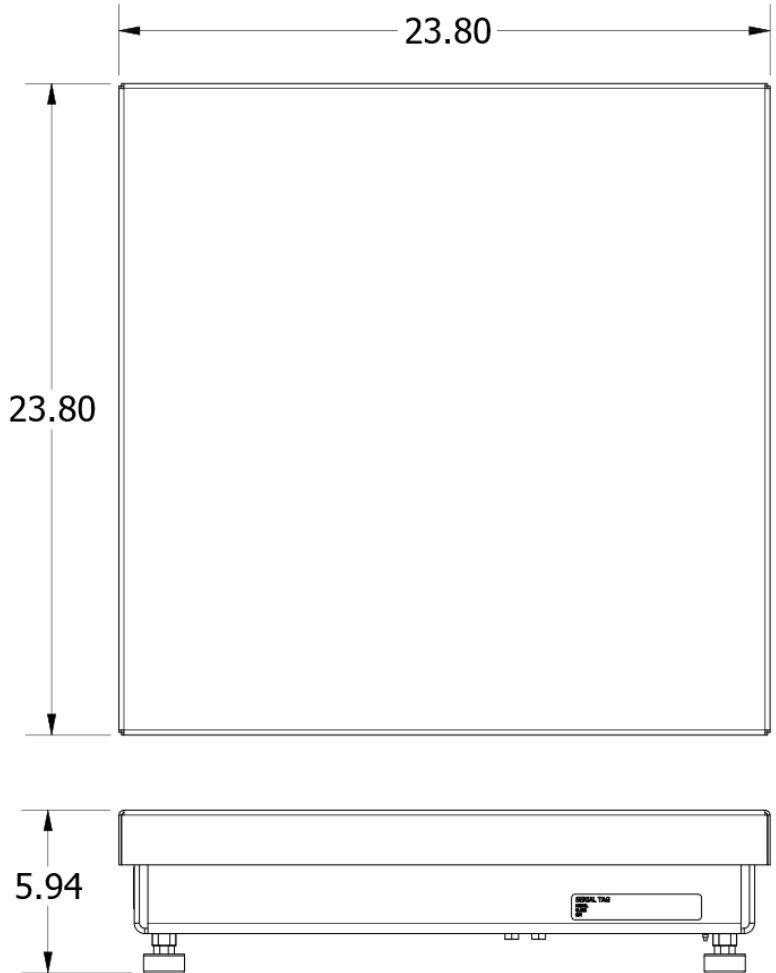
# 11.2. P/N 39246 (100 LB. CAPACITY) – PARTS DIAGRAM



### 11.3. P/N 39247 (250 LB. CAPACITY) – PARTS LIST

Item	Qty.	Part No.	Description
1	1	39309	PLATE, SUPPORT, 24x24 MS, 5000D, 0.19" THICK
2	1	39262	SPIDER, PLATFORM, 24X24 MS, 5000d
3	1	39255	BASE, PLATFORM, 24X24 MS, 5000d
4	1	38235	ADHESIVE DOT, 3M VHB .5" CIRCLE
6	1	24448	COVER
7	1	17613	TIE, WIRE, 4"
8	1	15835	LOADCELL - 150 KG
9	1	15831	SPACER, LOADCELL
10	1	15830	SPACER, SS LOADCELL
12	1	15017	CLIP,GROUND H500x'S
13	10	14233	Foot-125x43x87-m14233
14	4	11480	FOOT SUB ASSY, 1/2-13 SS
16	4	11101	NUT, HEX, 1/2-13, SS
17	8	11066	SCREW, HEX, 1/4-20 X .50", SS
18	8	11050	SCREW, HEX, 5/16-18 X 1.00", SS
19	1	11039	Bubble Level

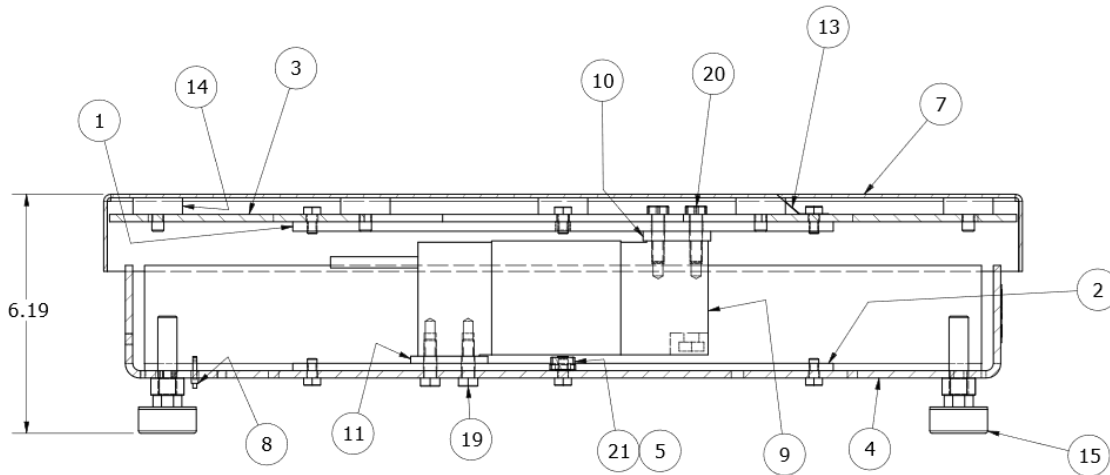
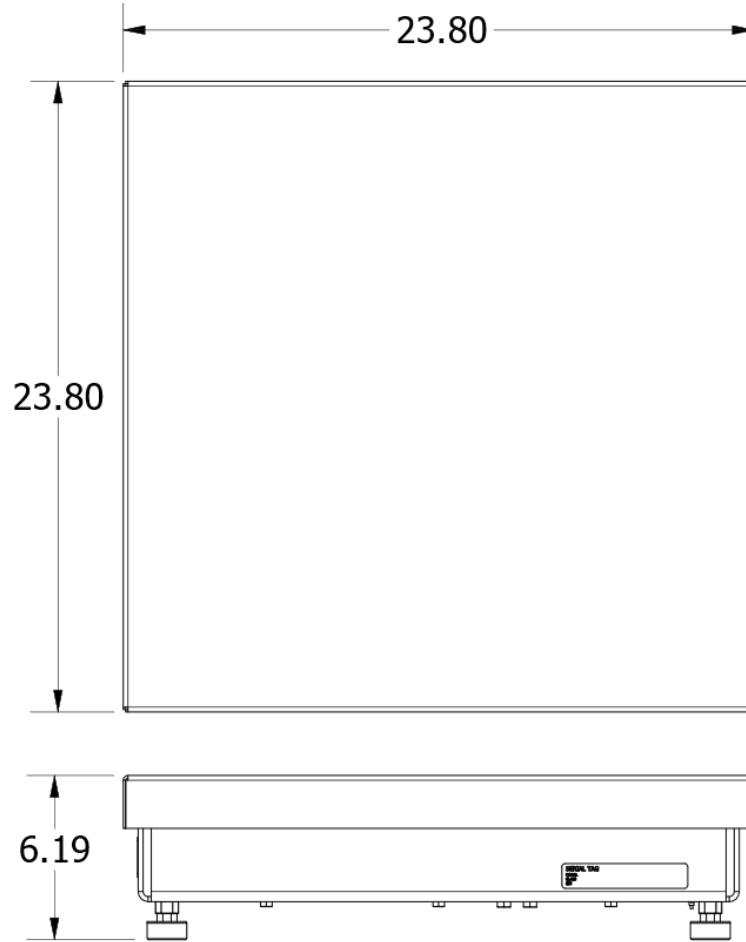
# 11.4. P/N 39247 (250 LB. CAPACITY) – PARTS DIAGRAM



## 11.5. P/N 39248 (500 LB. CAPACITY) – PARTS LIST

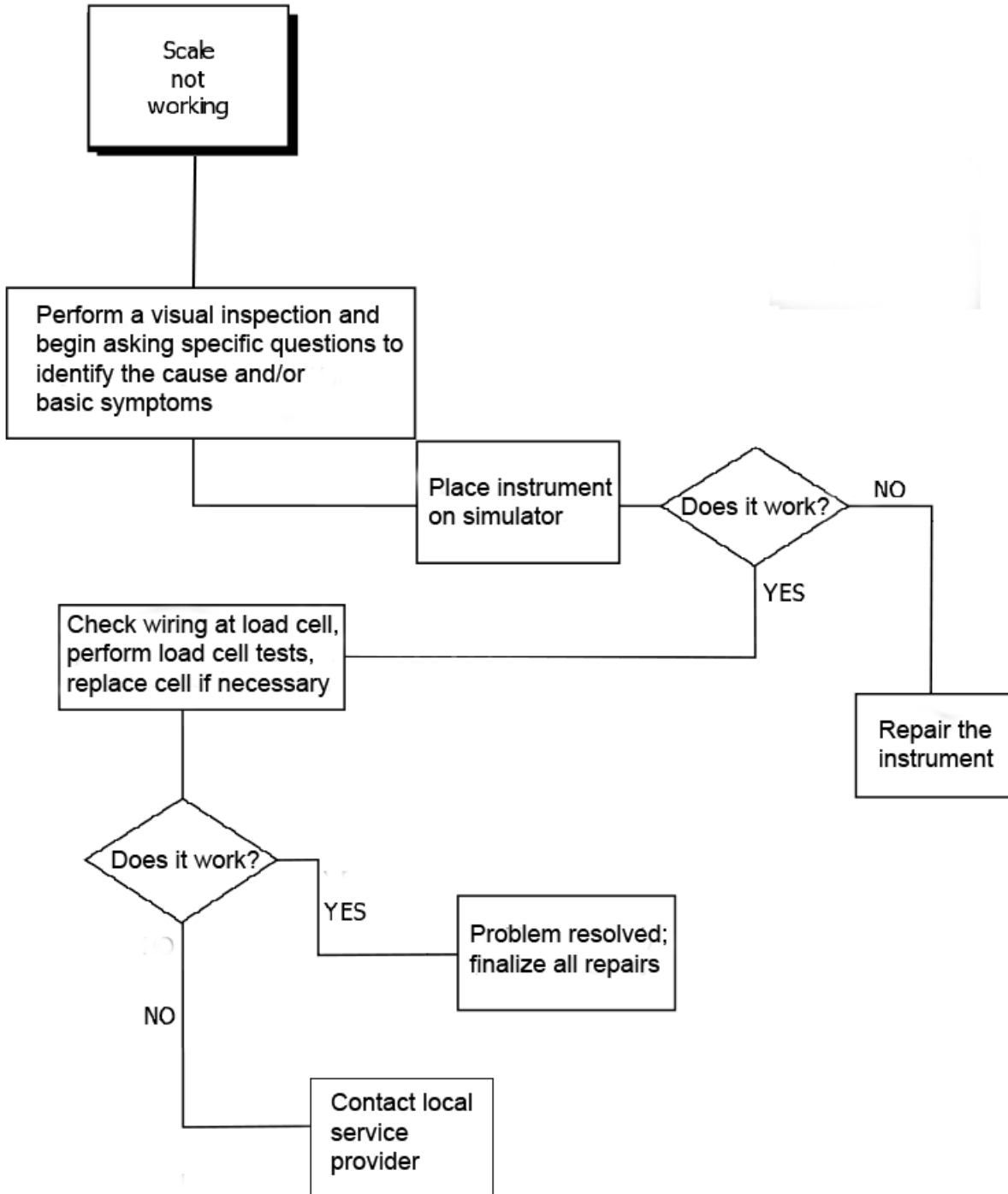
Item	Qty.	Part No.	Description
1	1	39310	PLATE, SUPPORT, 24x24 MS, 5000D, 0.25" THICK
2	1	39309	PLATE, SUPPORT, 24x24 MS, 5000D, 0.19" THICK
3	1	39262	SPIDER, PLATFORM, 24X24 MS, 5000d
4	1	39255	BASE, PLATFORM, 24X24 MS, 5000d
5	1	38235	ADHESIVE DOT, 3M VHB .5" CIRCLE
7	1	24448	COVER
8	1	17613	TIE, WIRE, 4"
9	1	15836	LOADCELL - 300 KG
10	1	15831	SPACER, LOADCELL
11	1	15830	SPACER, SS LOADCELL
13	1	15017	CLIP,GROUND H500x'S
14	10	14233	FOOT, MS X 1.25, BLACK RUBBER
15	4	11480	FOOT SUB ASSY, 1/2-13 SS
17	4	11101	NUT, HEX, 1/2-13, SS
18	16	11066	SCREW, HEX, 1/4-20 X .50", SS
19	4	11050	SCREW, HEX, 5/16-18 X 1.00", SS

# 11.6. P/N 39248 (500 LB. CAPACITY) – PARTS DIAGRAM





# Section 12: Troubleshooting Flow Chart





# **R5000 Series Platforms**

---

## **Silverback Bench Scale Platforms (Gen One) Service/Installation Manual Document 51641**

Manufactured by Fairbanks Scales, Inc.

[www.fairbanks.com](http://www.fairbanks.com)