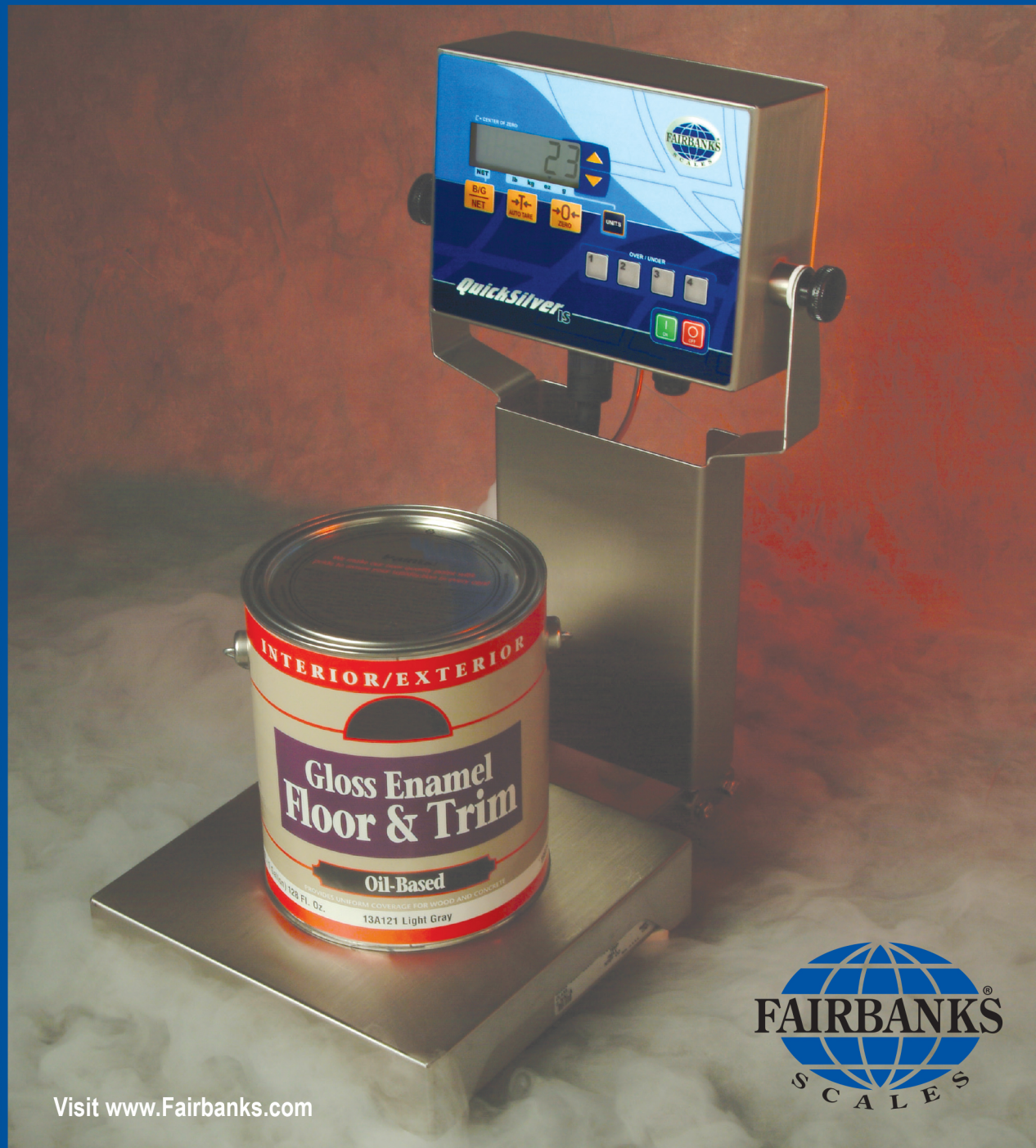
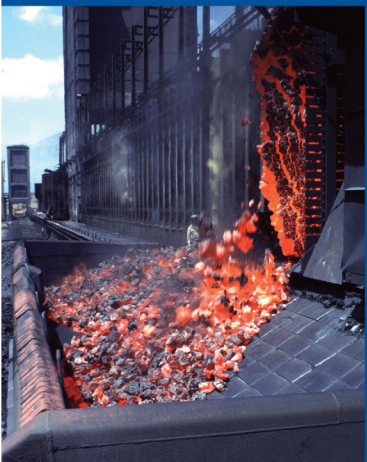


QuickSilver IS

“SAFE BY DESIGN”

Made for High Performance in Hazardous Environments
• Chemical • Pharmaceutical • Petroleum • Food Processing

Intrinsically Safe, Stainless Steel Bench Scales



Visit www.Fairbanks.com

QuickSilver^{IS}

INTRINSICALLY SAFE, STAINLESS STEEL

10 REASONS TO SPECIFY A QUICKSILVER IS BENCH SCALE

1. Factory Mutual approved for hazardous areas.
2. Capability to store multiple Over/Under settings when checkweighing.
3. Stainless steel construction for washdown environments.
4. Self-contained bench scale for general weighing.
5. Battery-powered scale for remote applications.
6. Approved for all commercial applications.
7. Most versatile intrinsically safe bench scale manufactured.
8. Highest degree of accuracy in FM approved bench scales.
9. 500% overload protection on most models.
10. Years of reliable service.

SAFETY & VERSATILITY

- The QuickSilver IS is Factory Mutual approved for Classes I, II, & III, Division 2, Groups A, B, C, D, F & G.
- QuickSilver IS are the only Factory Mutual approved bench scales that follow the AMI's 10 Principles for Sanitary Equipment Design.
- More than 100 possible QuickSilver IS Bench Scale configurations.
 - 25 QuickSilver Platforms
 - 7 QuickSilver Pillar Kits and Mounting Brackets
 - QuickSilver IS Instrument with Battery
- Rechargeable battery has up to 250 hours of use before needing recharging.
- Checkweighing, washdown environment safe, and intrinsically safe all-in-one bench scale for complete versatility.



Optional Direct Power Supply

EXCEPTIONAL FEATURES



0.75",
6-digit,
Liquid
Crystal
Display for
ease of
viewing.



Tilt Adjust
Indicator

Approvals



Made for top performance
in volatile, industrial
environments.

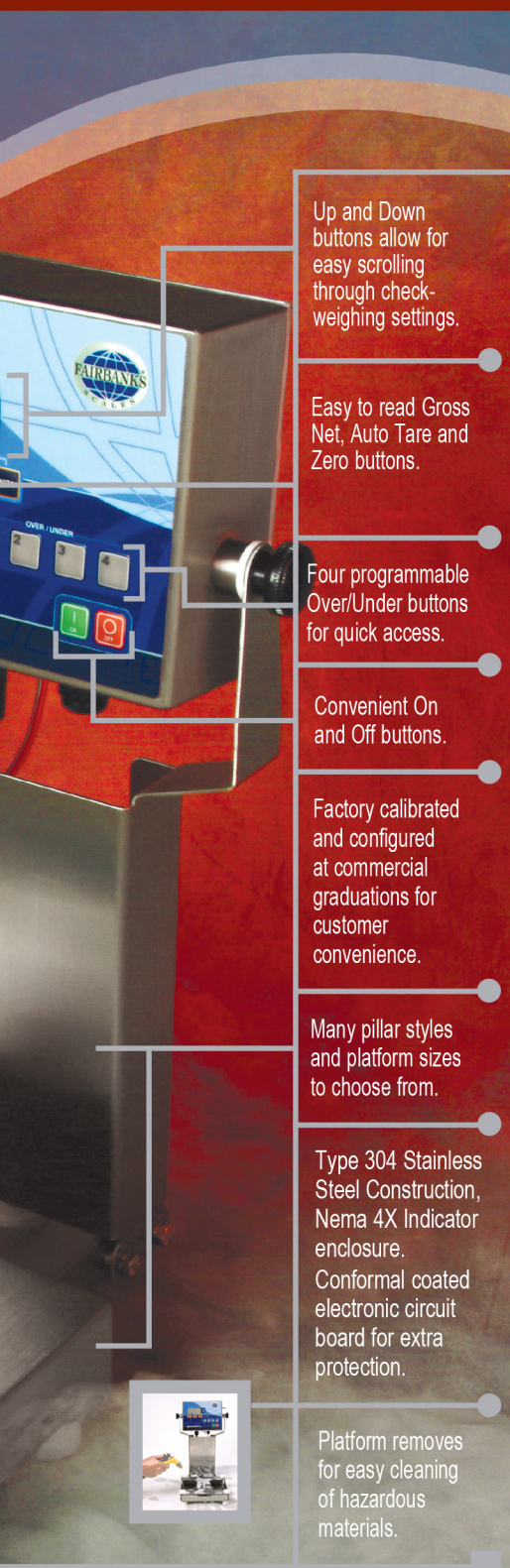


SAFE BY DESIGN



SETTING THE
INDUSTRY STANDARD
SINCE 1830

BENCH SCALES FOR HAZARDOUS ENVIRONMENTS



Up and Down buttons allow for easy scrolling through checkweighing settings.

Easy to read Gross Net, Auto Tare and Zero buttons.

Four programmable Over/Under buttons for quick access.

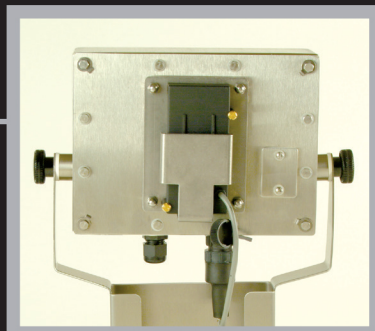
Convenient On and Off buttons.

Factory calibrated and configured at commercial graduations for customer convenience.

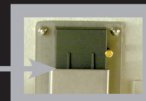
Many pillar styles and platform sizes to choose from.

Type 304 Stainless Steel Construction, Nema 4X Indicator enclosure. Conformal coated electronic circuit board for extra protection.

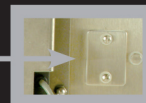
Platform removes for easy cleaning of hazardous materials.



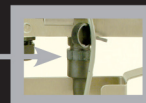
Shown with rechargeable battery.



Quick access to calibration.



Battery 'Quick Disconnect'.



100 WAYS TO BUILD A QUICKSILVER IS BENCH SCALE

Getting the right intrinsically safe platform, pillar and indicator configuration is easy with Fairbanks' new QuickSilver line of Intrinsically Safe Bench Scales. That's because Fairbanks offers its customers more choices than any other scale manufacturer. There are more than 100 different ways to configure the QuickSilver IS — making it possible to get a custom scale at standard pricing.



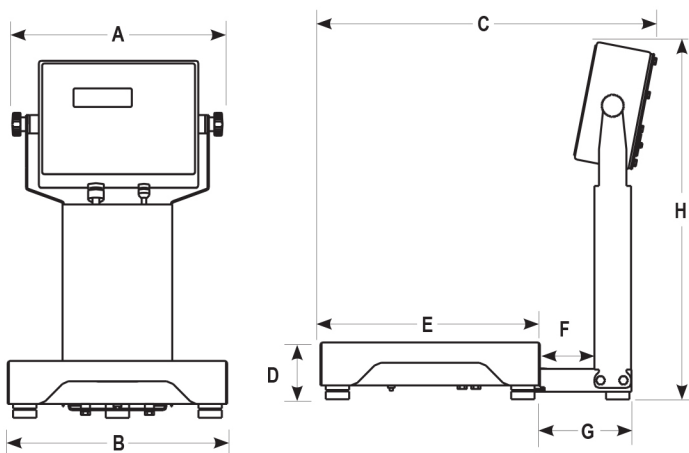
*It's so easy to get the intrinsically safe scale
you need from Fairbanks Scales!*

MAGNIFY YOUR REVENUE OPPORTUNITIES

The speed and accuracy of the QuickSilver IS Bench Scale can dramatically improve your company's revenue opportunities. Four pre-programmed Checkweighing settings keep operations moving without interruption, increasing production. And, this multi-functional scale saves on equipment costs because it performs a variety of other weighing tasks, such as general weighing, filling, manual batching and grading. With advanced electronics and superior mechanical design, the QuickSilver IS Bench Scale is truly the most cost-effective and cost-efficient scale in its class.

Service & Installation manuals: Fairbanks Scales' intrinsically safe equipment requires special attention to the service and installation manuals. Serious damage could occur if guidelines are not followed.

DIMENSIONS



Platform Size	A	B	C	D	E	F	G	H
10" x 10"	11.43"	10"	16.37"	2.89"	10"	2.98"	4.98"	20.45" 10" Pillar
12" x 12"	11.43"	12"	18.37"	3.10"	12"	2.98"	4.98"	28.45" 18" Pillar
18" x 18"	11.43"	18"	24.37"	3.87"	18"	2.98"	4.98"	40.45" 30" Pillar
18" x 24"	11.43"	18"	30.15"	5.06"	24"	2.76"	4.76"	44.17"
24" x 24"	11.43"	24"	30.06"	5.77"	24"	2.67"	4.67"	44.17"

* 4.12" for 300 lb model.

** H dimension for the 24" x 24" with a 30" pillar is 41.47.

SPECIFICATIONS

Capacities	2 to 1000 lbs.
Platform Sizes	10" x 10" to 24" x 24", Type 304 Stainless Steel
Commercial rating	5,000 divisions
Configurations	25 scale platforms and 7 pillar options for more than 100 possible configurations
Indicator	Tilt adjust, easy access calibration switch
Display	.075" tall, 6-character, 7-segment Liquid Crystal Display (LCD)
Filtering	4 levels for vibration suppression
Controls	Auto Tare, $\frac{BIG}{NET}$, (Gross/Net), Units, Zero, On, Off, Over/Under with 4 preset checkweigh ranges
Units	lb, kg, oz, gm, selectable
Zero	Programmable +/-2% or 100% of scale capacity
Auto Zero Tracking	Off, 0.5, 1 or 3 divisions
Center of Zero Indicator	Active when scale is within 0.25 divisions of zero
Power Requirements	.7 volt rechargeable nicad battery pack (removable, 65 hours continuous use, 250 hours in sleep mode); or direct power supply (not rated for Division 1 or Groups A and B)
Approvals	NTEP CC #94-100 (platform), NTEP CC #92-050 (instrument), MC #AM-5110, CSA, FM approved for Classes I, II & III, Division 2, Groups A, B, C, D, F & G

CAPACITY CHART: COMMERCIAL & NON-COMMERCIAL DIVISION SIZES

Capacity (in lbs)	Commercial Division Size			Non-Commercial Division Size		
	lb (pounds)	kg (kilograms)	oz (ounces)	lb (pounds)	kg (kilograms)	oz (ounces)
2	N/A	N/A	N/A	2.0000 x 0.0005	0.9050 x 0.0002	32 x 0.005
6	6.000 x 0.002	2.720 x 0.001	96 x 0.02	6.000 x 0.001	2.720 x 0.0005	96 x 0.01
10	10.000 x 0.002	5.000 x 0.001	160 x 0.05	10.000 x 0.001	5.000 x 0.002	160 x 0.02
12	12.000 x 0.005	5.440 x 0.002	192 x 0.05	12.000 x 0.002	5.440 x 0.002	192 x 0.02
24	24.000 x 0.005	10.900 x 0.005	384 x 0.1	24.000 x 0.002	10.900 x 0.002	384 x 0.1
25	25.000 x 0.005	11.310 x 0.005	400 x 0.1	25.000 x 0.002	11.310 x 0.002	400 x 0.1
30	30.00 x 0.01	13.57 x 0.01	480 x 0.2	30.00 x 0.005	13.57 x 0.002	480 x 0.1
40	40.00 x 0.01	18.10 x 0.01	640 x 0.2	40.00 x 0.01	18.10 x 0.01	640 x 0.1
50	50.00 x 0.01	22.62 x 0.01	800 x 0.2	50.00 x 0.01	22.62 x 0.01	800 x 0.1
60	60.00 x 0.02	27.15 x 0.01	960 x 0.2	60.00 x 0.01	27.15 x 0.01	960 x 0.1
100	100.00 x 0.02	45.25 x 0.01	1600 x 0.5	100.00 x 0.01	45.25 x 0.01	1600 x 0.2
150	150.00 x 0.05	67.87 x 0.02	2400 x 0.5	150.00 x 0.02	67.87 x 0.01	2400 x 0.2
200	200.00 x 0.05	90.50 x 0.02	3200 x 1	200.00 x 0.02	90.50 x 0.01	3200 x 1
250	250.00 x 0.05	113.12 x 0.05	4000 x 1	250.00 x 0.01	113.12 x 0.02	4000 x 1
300	300.0 x 0.1	135.8 x 0.1	4800 x 2	300.0 x 0.1	135.8 x 0.1	4800 x 1
500	500.0 x 0.1	226.5 x 0.1	8000 x 2	500.0 x 0.1	226.5 x 0.1	8000 x 1
1000	1000.00 x 0.2	435.5 x 0.1	16000 x 5	1000.00 x 0.1	435.5 x 0.1	16000 x 2

Call toll-free for the representative nearest you:

(800) 451-4107

Call between 8:00 a.m. – 5:00 p.m. Central Time

Corporate Headquarters: 6800 W. 64th Street, Overland Park, Kansas 66202

(816) 471-0231 Internet Address: <http://www.Fairbanks.com>

