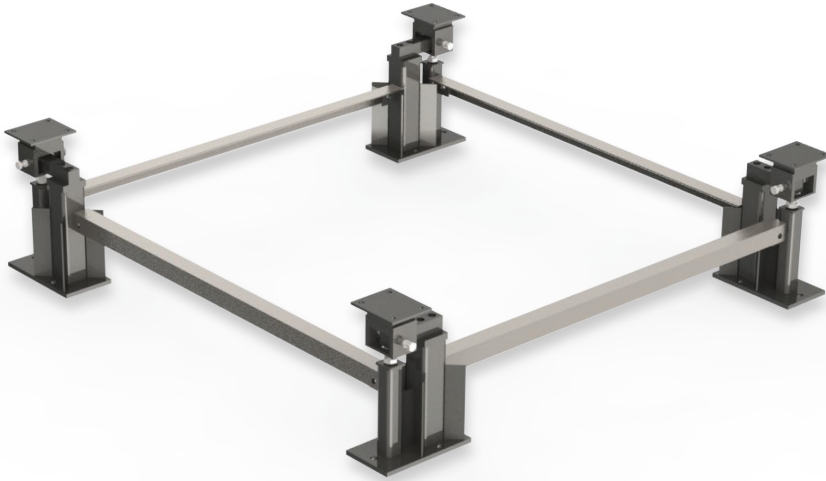




OmniMount PRO

WEIGHING SYSTEM



The Certified Solution for Legal-for-Trade Applications

The OmniMount PRO Weighing System is a premier weighing solution designed to meet the rigorous demands of commercial applications requiring Legal-for-Trade compliance. This system is perfect for retrofitting or new installations in a wide variety of industries, including industrial, agricultural, and chemical sectors.

Unmatched Versatility and Customization

Each OmniMount PRO system is meticulously tailored to meet your specific size and operational requirements, ensuring seamless integration under existing or newly installed tanks, hoppers, silos, or weigh vessels. Bolt patterns are designed to match your tank or hopper legs, ensuring a precise and secure fit for your application. This flexibility allows OmniMount PRO to provide a custom fit solution while delivering exceptional performance in even the most challenging environments.

**TURN YOUR EXISTING TANK OR HOPPER INTO
A LEGAL FOR TRADE SCALE WITH EASE!**



PROVIDE FAIRBANKS WITH THE HOPPER'S LENGTH, WIDTH, PLUS HEIGHT OF THE LOAD CELL STANDS AND WE'LL CUSTOM FABRICATE A FULL STAINLESS STEEL BOLT-IN **OMNIMOUNT PRO** WEIGHING SYSTEM TO YOUR EXACT DIMENSIONS.

- **NTEP Approved**
- **Legal for Trade, High Accuracy Weighing System**
- **Capacities range from 2,000 lbs to 40,000 lbs**
- **Constructed of 304 Stainless Steel**



1

TECHNICIAN-FRIENDLY DESIGN
THE SYSTEM IS DESIGNED FOR EASY INSTALLATION, MINIMIZING DOWNTIME AND ALLOWING FOR QUICK SETUP.

2

DURABLE IN HARSH ENVIRONMENTS
ENGINEERED TO KEEP OUT DUST AND MOISTURE EVEN IN HARSH ENVIRONMENTS, RELIABLE PERFORMANCE IN DEMANDING INDUSTRIAL SETTINGS.





OmniMount PRO

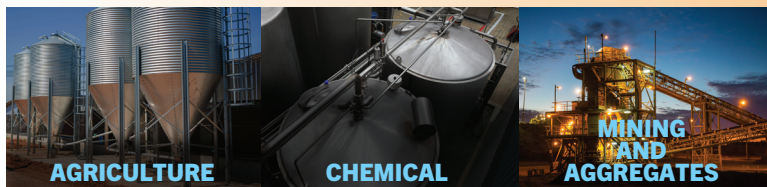
WEIGHING SYSTEM

WEIGHING SOLUTIONS FOR THE WORLD

Advanced Engineering for Superior Performance:

- **Rocker Pin Assembly:** The system uses a rocker pin to introduce the load, ensuring it is applied directly along the load cell's neutral axis, which enhances accuracy and precision.
- **100% Uplift Protection:** For added safety, the system features complete protection against any uplift forces.
- **Adjustable Side-to-Side Checking:** This feature offers enhanced flexibility, allowing for better control over load placement and stability.

PRECISION WEIGHING FOR YOUR INDUSTRY:



AGRICULTURE

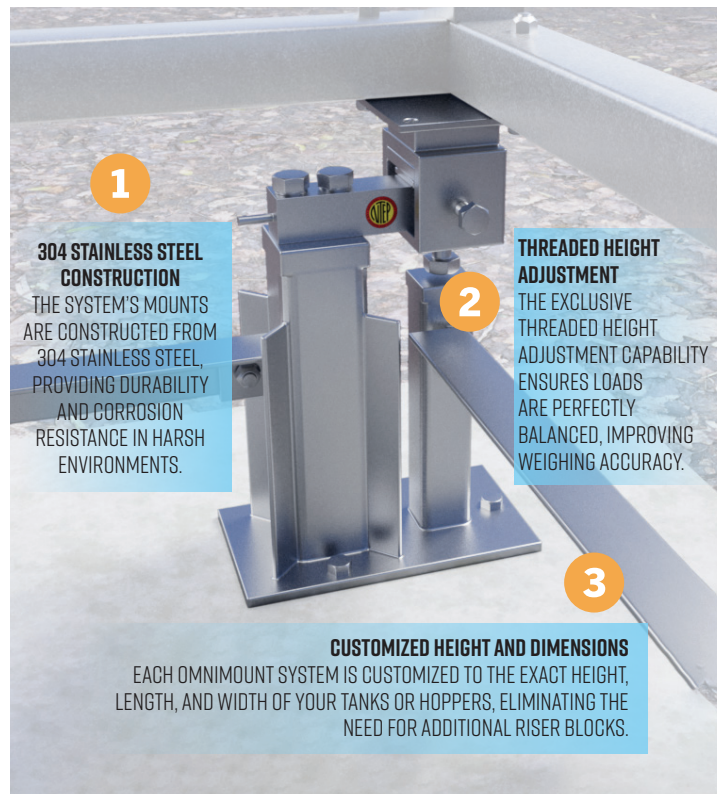
The OmniMount PRO system is perfect for use with fertilizer blenders and grain silos.

CHEMICAL

Handles the precision and durability demands of challenging chemical environments.

MINING AND AGGREGATES

Built to withstand vibrations and loads from blending, mixing, and other high-vibration activities.



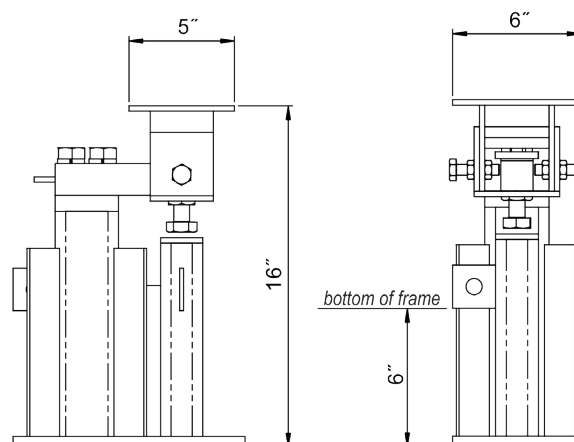
SPECIFICATIONS

Capacities 2,000 to 40,000 lbs.
Mount construction 304 stainless steel
Frame construction Stainless steel
Load Cell:
Output 3 mV/v
Combined error 0.2% of capacity
Compensated temperature 14° F – 104° F
Overload protection 150% of capacity
Bridge resistance 350Ω
Load cell construction 17-4 stainless steel
Load cell sealing IP68
Cable length:
Capacities <= 10,000 lbs. . . 19.6 ft.
Capacities <= 15,000 lbs. . . 32 ft.
Approvals NTEP 24-025

DIMENSIONS

Each OmniMount PRO system is customized to suit the exact size requirements to fit under existing or newly installed vessels. The following side lengths are NTEP approved based on the corresponding capacity ranges:

2,000 to 5,000 lbs. 1.35 to 3.95 ft.
8,000 to 30,000 lbs. 3.95 to 8.75 ft.
10,000 to 40,000 lbs. 8.0 to 20.0 ft.



Dimensions in the above drawing are provided as an example. Final specifications are subject to individual applications.

Call toll-free for the representative nearest you:

(800) 451-4107

Call between 8:00 a.m. – 5:00 p.m. Central Time

Corporate Headquarters: 6800 W. 64th Street, Overland Park, Kansas 66202

(816) 471-0231 fairbanks.com