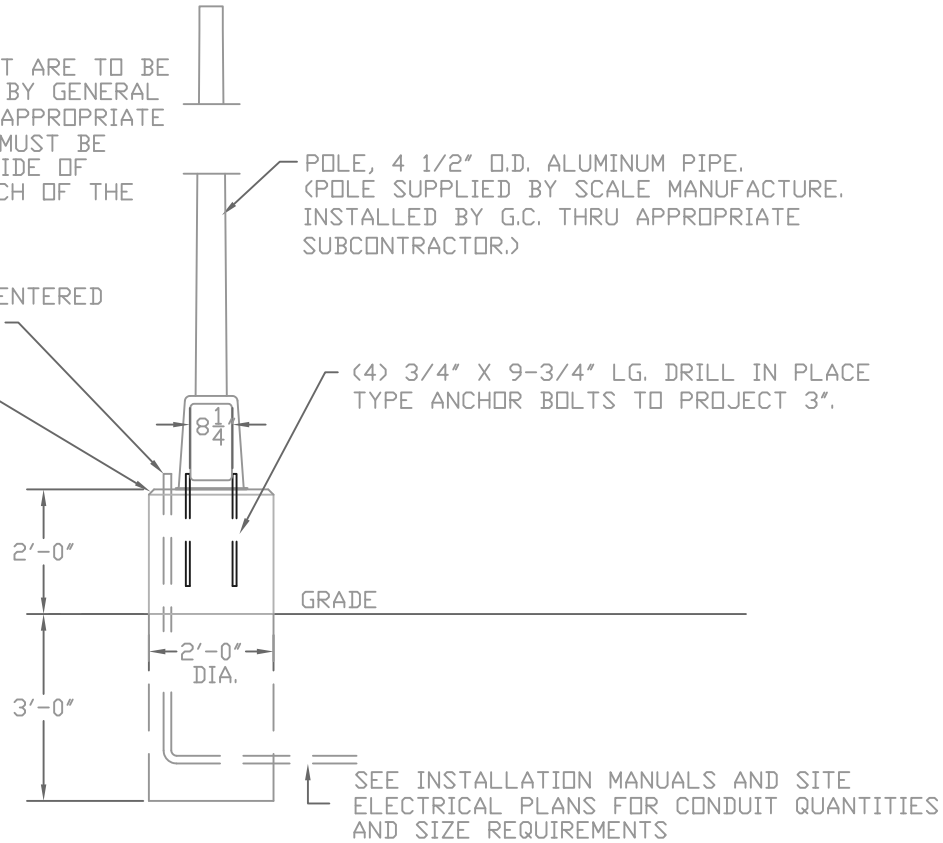


NOTE:

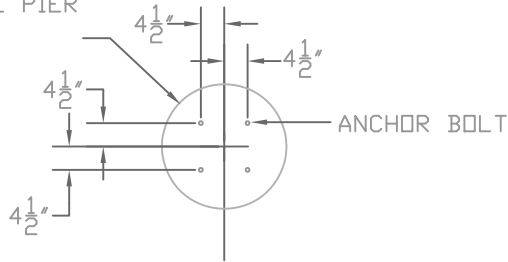
POLE PIER, AND CONDUIT ARE TO BE SUPPLIED & INSTALLED BY GENERAL CONTRACTOR THRU THE APPROPRIATE SUB-CONTRACTOR. PIER MUST BE LOCATED ON DRIVERS SIDE OF THE SCALE WITHIN REACH OF THE DRIVERS WINDOW.

1" METAL CONDUIT(S) CENTERED TO ONE SIDE OUTSIDE OF BASE. PROJECT 3".

BEVEL TOP EDGE



LIGHT POLE PIER
(2'-0" DIA.)



IN AREAS OF THE COUNTRY WHERE THERE IS SEVERE FREEZING, INCREASE THE DEPTH OF THE FOUNDATION SO THAT THE BOTTOM EXTENDS BELOW THE FROST LINE, OR PROVIDE A MINIMUM OF 12" FREE DRAINING GRANULAR MATERIAL TO PREVENT FROST HEAVE.

LET	BY	DATE	REVISION	FAIRBANKS SCALES		
						NAME
				DAT POLE BASE FOUNDATION		
				DATE		
				01/20/15		
<p>THE MATERIAL AND INFORMATION CONTAINED HEREIN IS CONFIDENTIAL AND IS THE PROPERTY OF FAIRBANKS SCALES AND IS NOT TO BE USED, DISCLOSED, COPIED TRANSFERED OR REPRODUCED WITHOUT THE PRIOR WRITTEN PERMISSION OF FARBANKS SCALES.</p>			<p>UNLESS OTHERWISE SPECIFIED: DIMENSIONS ARE IN INCHES TOLERANCES: FRACTIONS ±1/16" ANGLES 3-PLACE DECIMAL 2-PLACE DECIMAL HOLE DIAMETERS ±1/32"</p>		SCALE: N/A	SHEET 1 OF 1
			MATERIAL	FINISH	DRAWN BY: D	
			CHECKED BY:	A105660-DAT		
			APPROVED BY:			