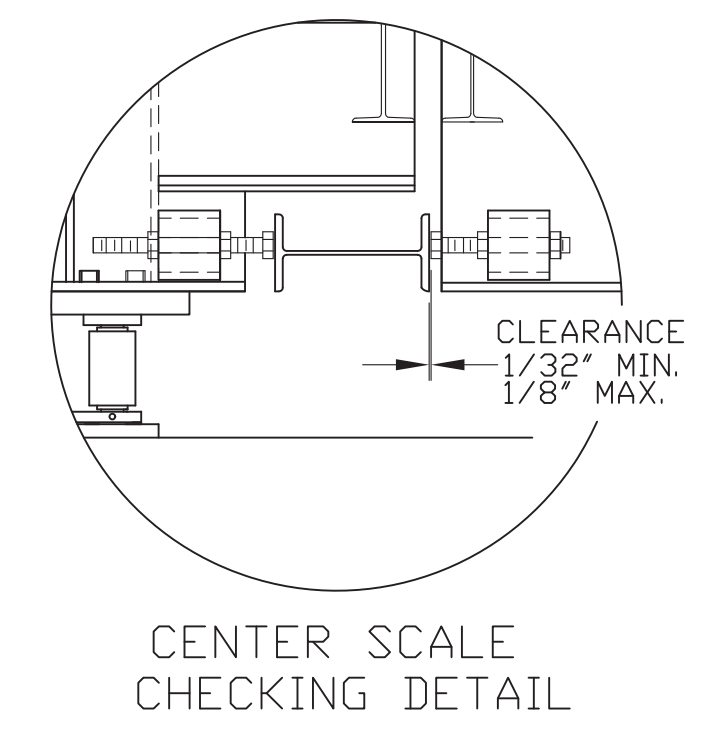
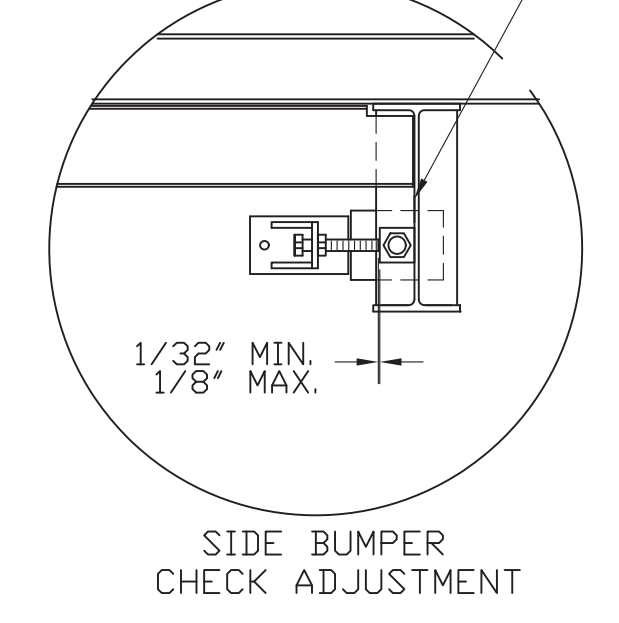


NOTE: INSTALL MAIN GIRDERS SO THAT BUMPER BLOCK FACES CENTERLINE OF SCALE



NOTE: ALL BUMPER BOLTS MUST BE INSTALLED BEFORE MAIN GIRDERS ARE PLACED IN FINAL POSITION.

5/8\" x 6\" BOLT W/ WASHER TO PROJECT 1\" TYP.

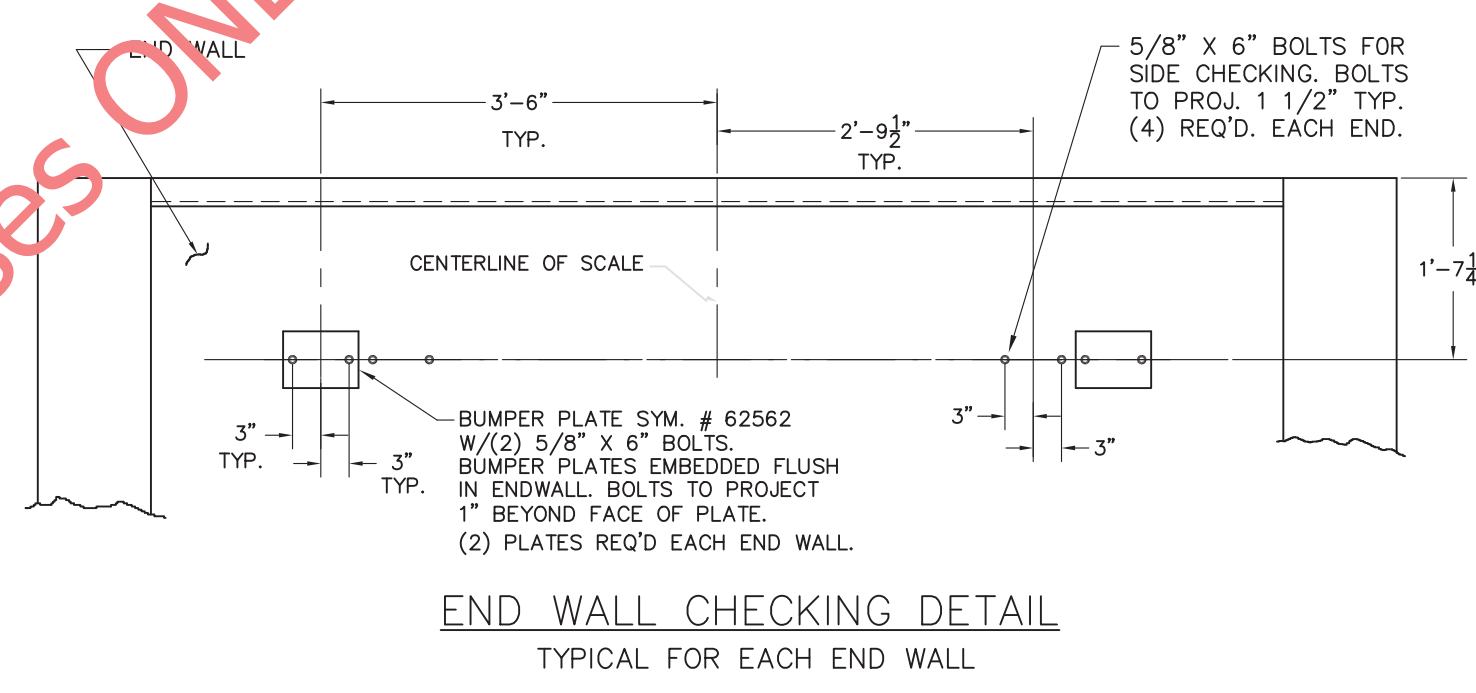
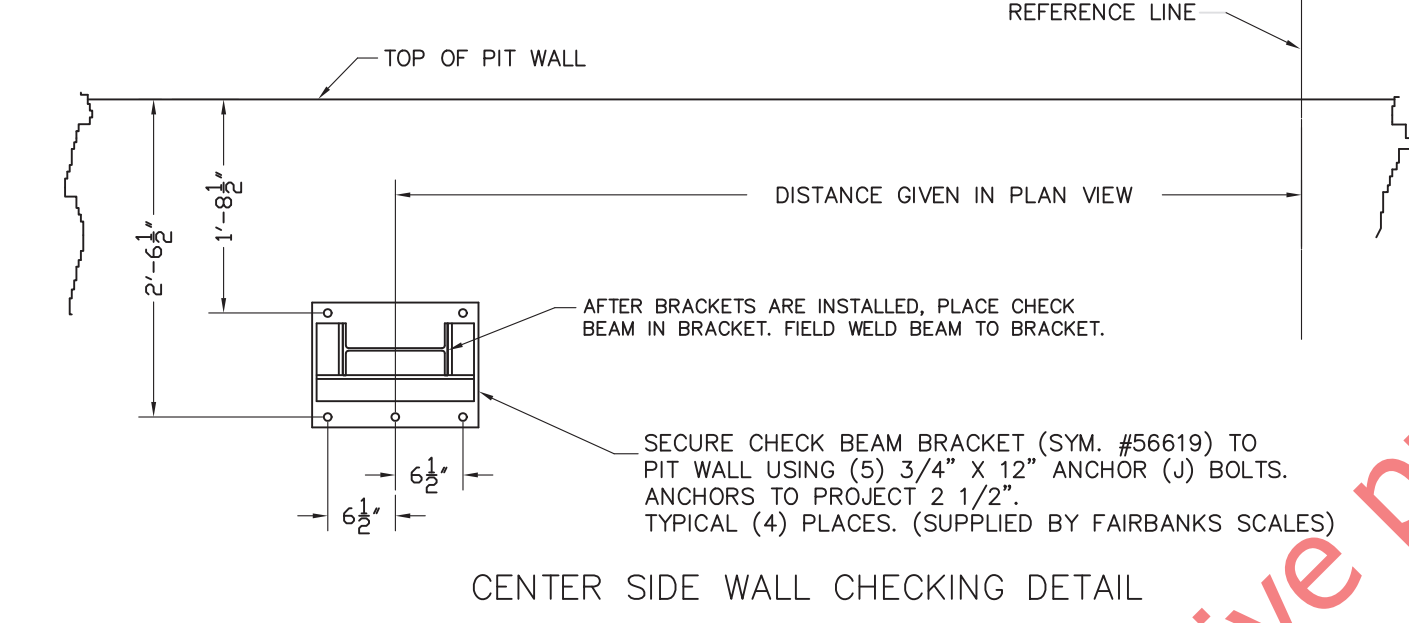
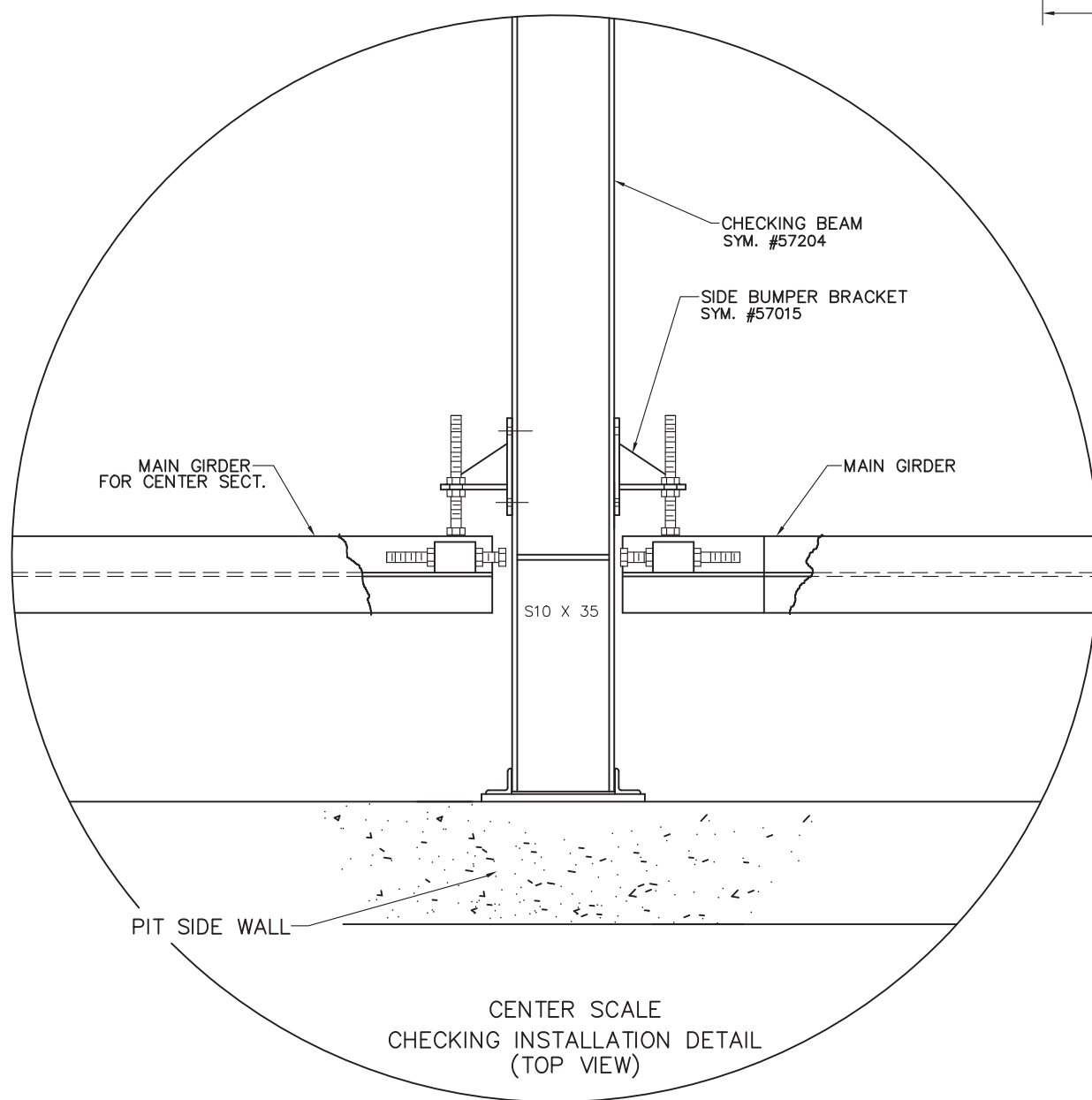
BUMPER PLATE SYM. NO. 62562

1/32\" MIN.

1/8\" MAX.

TYPICAL CHECKING ADJUSTMENT DETAIL

- GENERAL NOTES:
- EXCAVATION, FOUNDATION FORMS, FOUNDATION REBAR, AND ALL CONCRETE IS TO BE FURNISHED BY CONTRACTOR OR CUSTOMER OR AS CONTRACTED. REINFORCED FOUNDATION DRAWINGS SUITABLE FOR NORMAL INSTALLATION ARE AVAILABLE UPON REQUEST.
 - THE PIT DIMENSIONS AS SHOWN ARE THE MINIMUM REQUIRED TO ACCOMMODATE THE SCALE. N.B.S. H44 REQUIREMENTS AND LOCAL WEIGHTS AND MEASURE REGULATIONS MAY SPECIFY ADDITIONAL INSTALLATION REQUIREMENTS. IN ORDER TO INSURE COMPLIANCE, CONSULT THE GOVERNING WEIGHTS AND MEASURE DEPARTMENT PRIOR TO INSTALLATION.
 - TO COMPLY WITH SPECIFICATIONS OF N.I.S.T. H44, ANY ENDS OF A VEHICLE SCALE INSTALLED IN ONE LOCATION FOR A PERIOD OF SIX MONTHS OR MORE SHALL HAVE A STRAIGHT APPROACH AT LEAST AS WIDE AS THE PLATFORM AND AT LEAST ONE-HALF THE LENGTH OF THE PLATFORM. NOT LESS THAN 10 FEET ON ANY APPROACH ADJACENT TO THE PLATFORM SHALL BE CONSTRUCTED OF CONCRETE OR OTHER DURABLE MATERIAL TO INSURE THAT THIS PORTION REMAINS SMOOTH AND IS IN THE SAME PLANE AS THE PLATFORM. WHERE NECESSARY FOR DRAINAGE, THE REMAINING PORTION OF THE APPROACH MAY SLOPE SLIGHTLY.
 - WORK FROM CENTERLINES WHEN ERECTING FORMS AND PLACING FOUNDATION BOLTS. PLACE BOLTS TO WITHIN $\pm 1/8$ " OF POSITIONS INDICATED ON DRAWING. (BOLTS MUST BE PLACED WITHIN $\pm 1/8$ " OF TOTAL DIMENSIONS FROM CENTERLINE OF SCALE.)
 - ADEQUATE PROVISION MUST BE MADE FOR READY ACCESS TO THE PIT FOR INSPECTION OR MAINTENANCE. 24\" DIA. MANHOLES ARE OPTIONALLY FURNISHED BY FAIRBANKS SCALES WHEN ORDERED. (SYM. NO. 5500B).
 - APPROXIMATELY 13 CU. YD. OF CONCRETE IS REQUIRED FOR THE PLATFORM SLABS. USE $f_c = 4000$ PSI CONCRETE.
 - VEHICLES SHOULD ENTER AND EXIT SCALE FROM APPROACHES ONLY. ALL CROSS TRAFFIC SHOULD BE RESTRICTED.
 - IT IS RECOMMENDED THAT THE WEIGHBRIDGE BE ASSEMBLED AND BLOCKED IN THE PIT BEFORE THE LOAD CELL ASSEMBLIES ARE ASSEMBLED AND INSTALLED.
 - WHEN WELDING IN PIT OR ON WEIGHBRIDGE, LOAD CELLS MUST BE DISCONNECTED AND LEADS TAPED TO PREVENT THEM FROM TOUCHING EACH OTHER AND FROM GROUNDING.
 - CAST-IN-PLACE ANCHOR BOLTS ARE NOT REQUIRED AT PIERS. BUT ARE REQUIRED IN THE WALLS FOR CHECKING SYSTEM.
 - TOPS OF ALL PIERS MUST BE SMOOTH, FLAT & LEVEL, FOR LOAD CELL BASE PLATES TO BEAR PROPERLY.



DECK REINFORCING FOR 10' SECTION

MARK	QTY.	SIZE	DESCRIPTION	WT.
R1	15	#4	9'-4"	94
R2	18	#5	9'-0"	169
R3	24	#4	3'-0"	48

REBAR BUNDLE # 57019

DECK REINFORCING FOR 20' SECTION

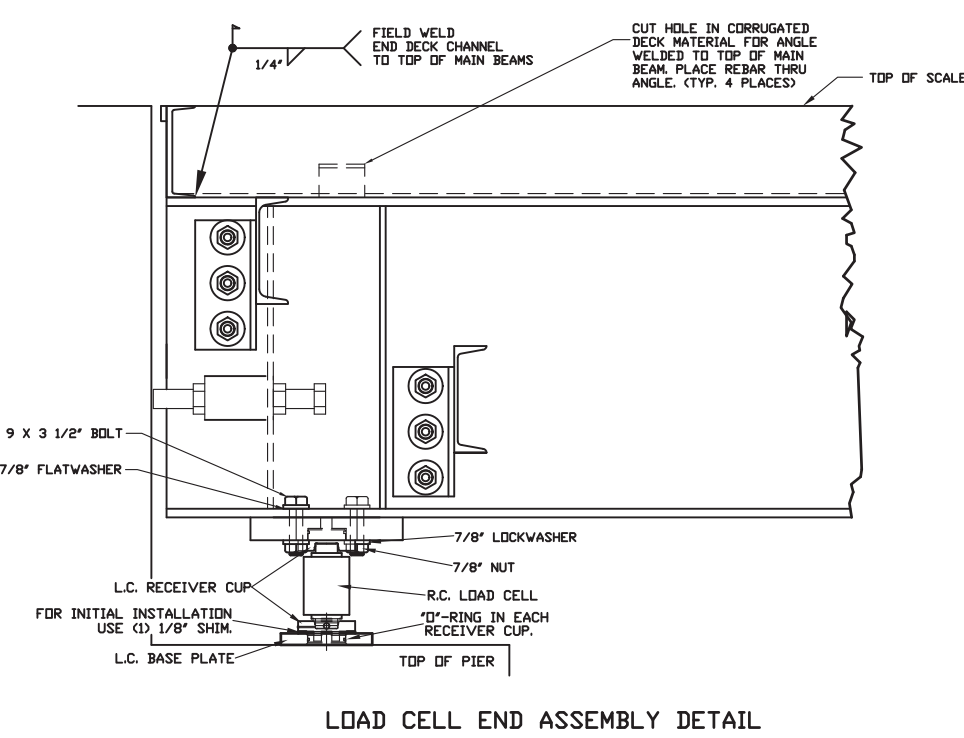
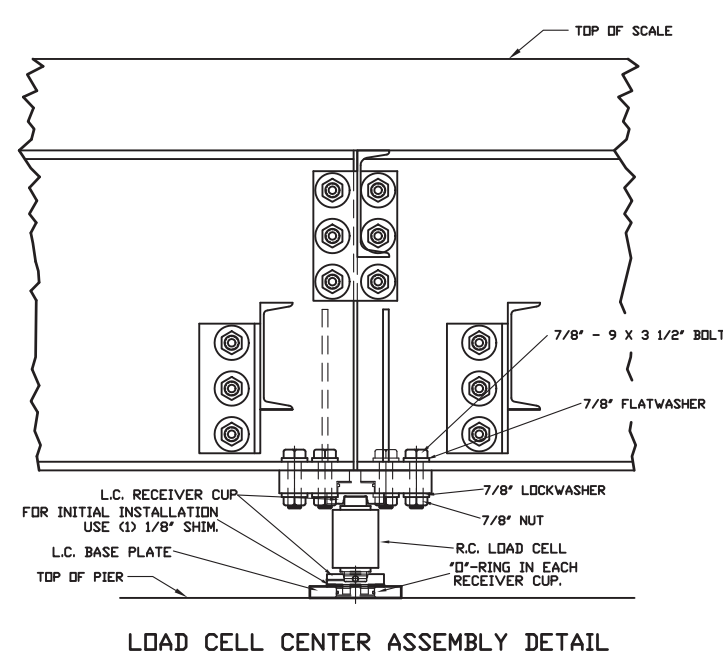
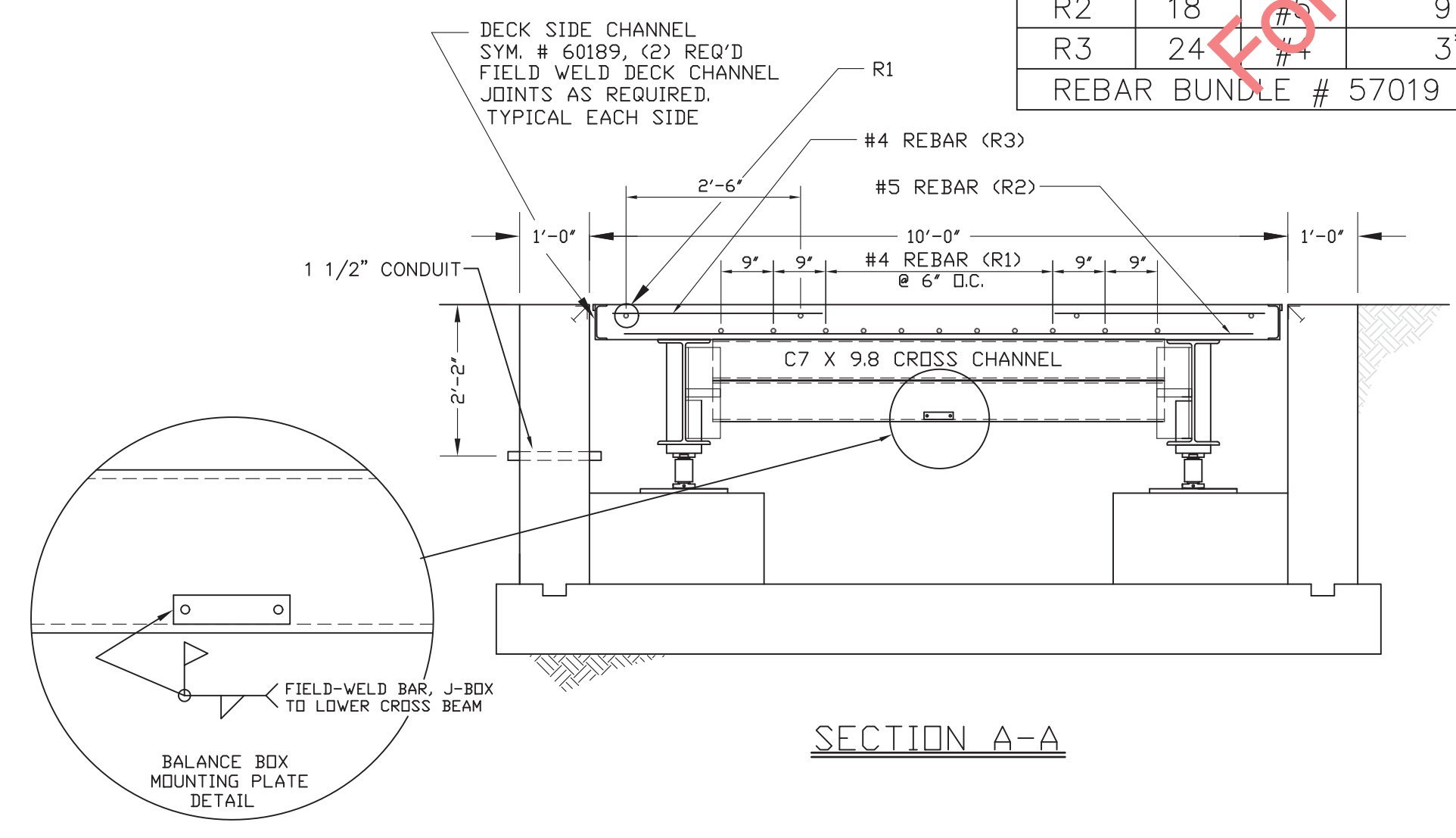
MARK	QTY.	SIZE	DESCRIPTION	WT.
R1	15	#4	19'-4"	194
R2	36	#5	9'-0"	338
R3	48	#4	3'-0"	96

REBAR BUNDLE # 57020

DECK REINFORCING FOR 40' SECTION

MARK	QTY.	SIZE	DESCRIPTION	WT.
R1	30	#4	21'-0"	421
R2	74	#5	9'-0"	695
R3	96	#4	3'-0"	192

REBAR BUNDLE # 57021



LET	BY	DATE	REVISION
A	SLS	1/19/00	REVISED WALL CHECKING HEIGHT
B	BT	2/21/00	REVISED CHECK BEAM DETAIL
C	SLS	11/00	REVISED ANCHOR BOLTS

FAIRBANKS SCALES
Meridian, Mississippi

10'-20'-40' X 10' HIGHWAY SYSTEM SETTING PLAN FULL ELECTRONIC CAP. 100 TON 70K CLC 7 SECTION

date: 10/21/99

scale in. per ft. sheet 1 of 1

drawn by GSB

traced by

checked by

approved by

PLT-2600RC-5MOHS1

D91518-SP