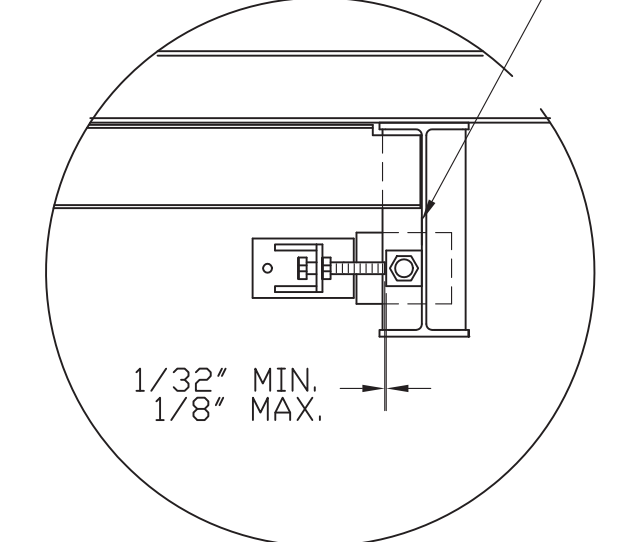
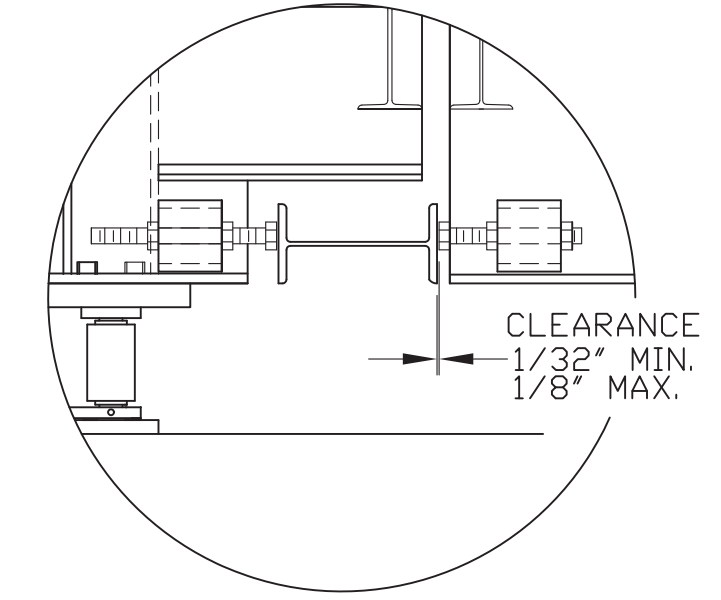
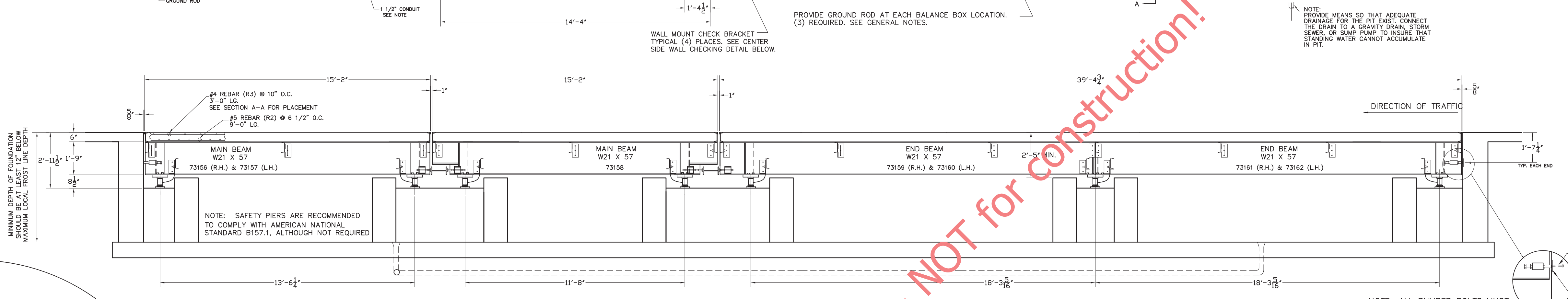


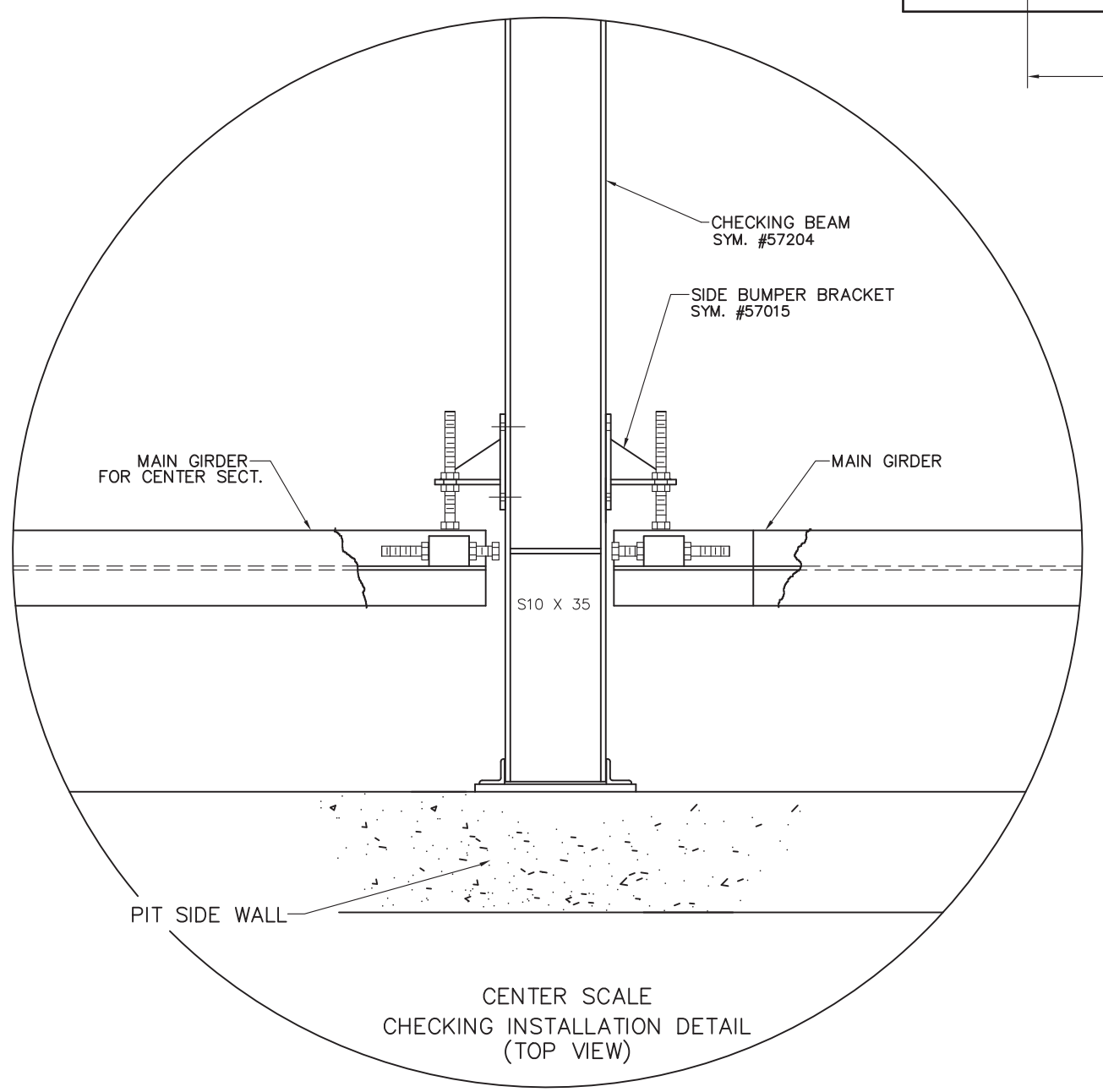
NOTE: INSTALL MAIN GIRDERS SO THAT BUMPER BLOCK FACES CENTERLINE OF SCALE



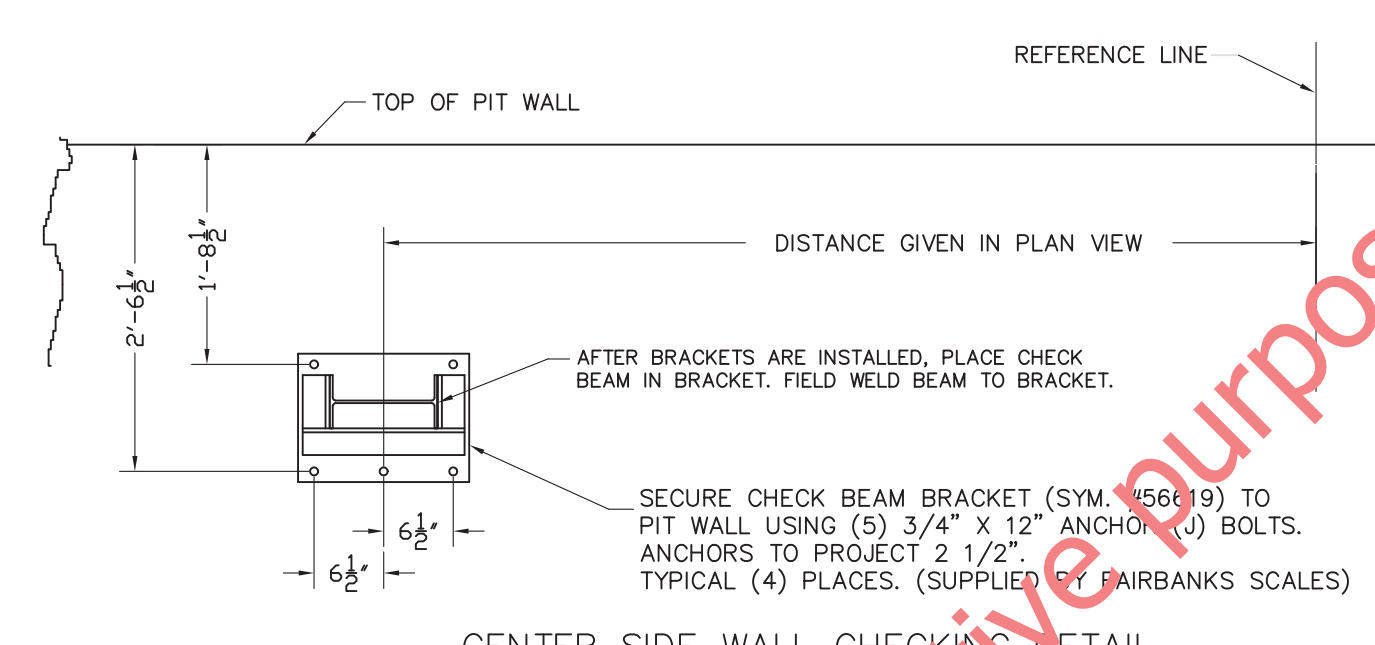
SIDE BUMPER CHECK ADJUSTMENT



CENTER SCALE CHECKING DETAIL



CENTER SCALE CHECKING INSTALLATION DETAIL (TOP VIEW)

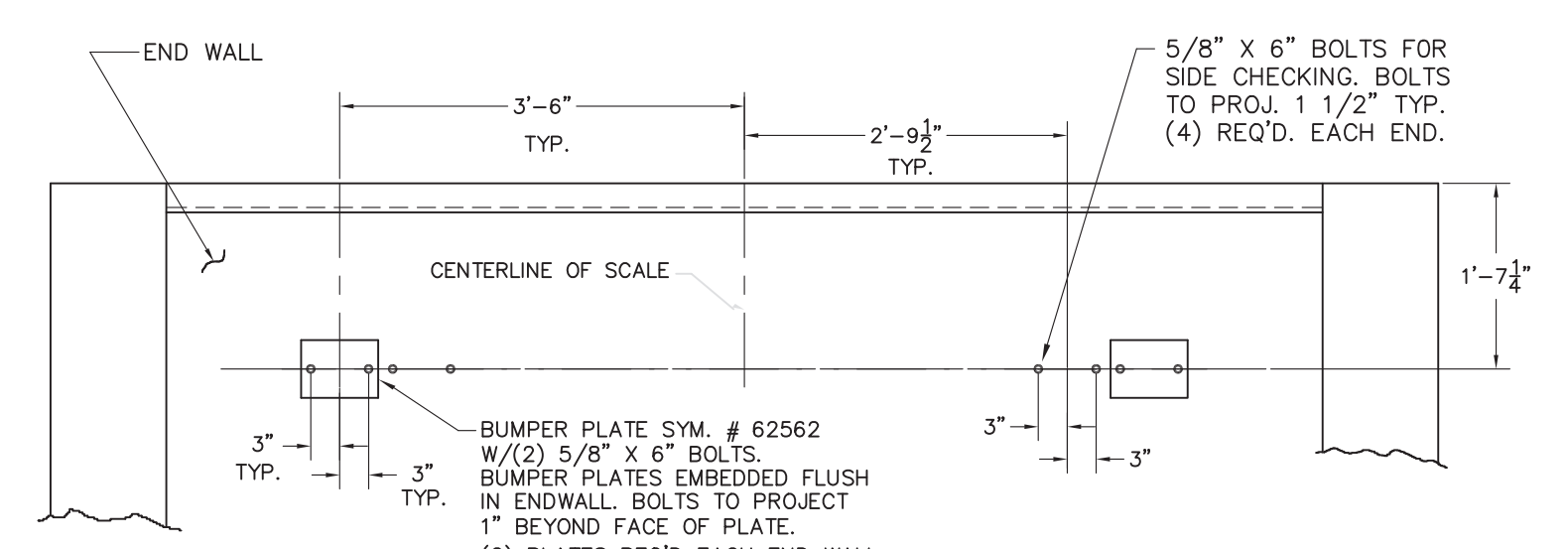


CENTER SIDE WALL CHECKING DETAIL

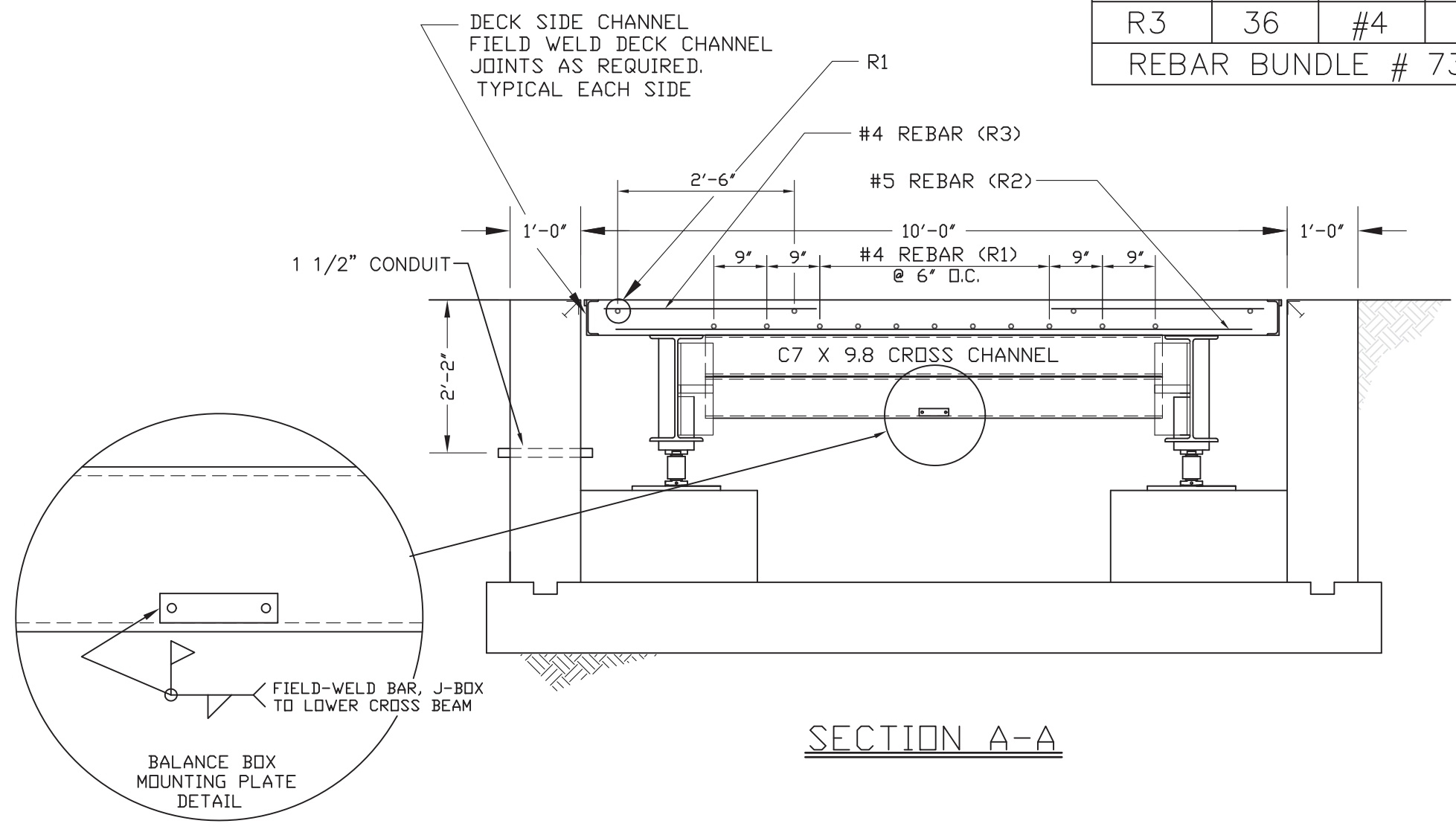
DECK REINFORCING FOR 15' SECTION				
MARK	QTY.	SIZE	DESCRIPTION	WT.
R1	15	#4	14'-7"	145
R2	28	#5	9'-0"	263
R3	36	#4	3'-0"	72
REBAR BUNDLE # 73153				

DECK REINFORCING FOR 40' SECTION				
MARK	QTY.	SIZE	DESCRIPTION	WT.
R1	30	#4	21'-0"	421
R2	74	#5	9'-0"	695
R3	96	#4	3'-0"	192
REBAR BUNDLE # 57021				

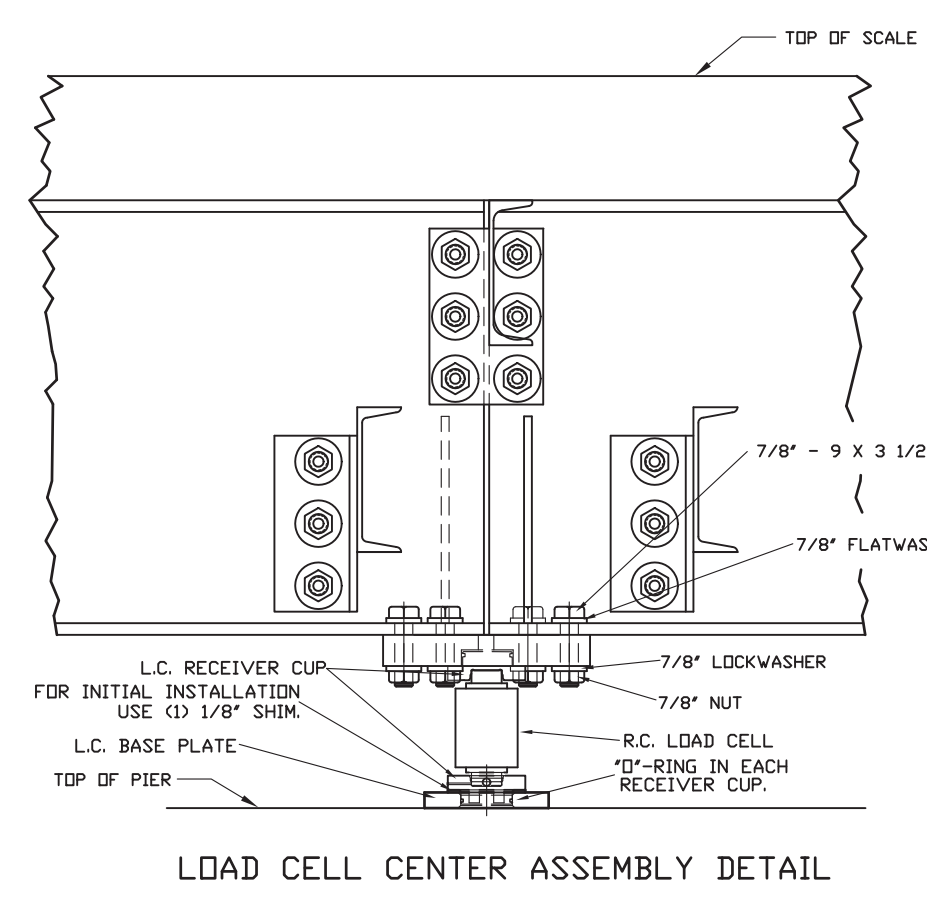
- GENERAL NOTES:**
- EXCAVATION, FOUNDATION FORMS, FOUNDATION REBAR, AND ALL CONCRETE IS TO BE FURNISHED BY CONTRACTOR OR CUSTOMER OR AS CONTRACTED. REINFORCED FOUNDATION DRAWINGS SUITABLE FOR NORMAL INSTALLATION ARE AVAILABLE UPON REQUEST.
  - THE PIT DIMENSIONS AS SHOWN ARE THE MINIMUM REQUIRED TO ACCOMMODATE THE SCALE. N.B.S. H44 REQUIREMENTS AND LOCAL WEIGHTS AND MEASURE REGULATIONS MAY SPECIFY ADDITIONAL INSTALLATION REQUIREMENTS. IN ORDER TO INSURE COMPLIANCE, CONSULT THE GOVERNING WEIGHTS AND MEASURE DEPARTMENT PRIOR TO INSTALLATION.
  - TO COMPLY WITH SPECIFICATIONS OF N.I.S.T. H44, ANY ENDS OF A VEHICLE SCALE INSTALLED IN ONE LOCATION FOR A PERIOD OF SIX MONTHS OR MORE SHALL HAVE A STRAIGHT APPROACH AT LEAST AS WIDE AS THE PLATFORM AND AT LEAST ONE-HALF THE LENGTH OF THE PLATFORM. NOT LESS THAN 10 FEET ON ANY APPROACH ADJACENT TO THE PLATFORM SHALL BE CONSTRUCTED OF CONCRETE OR OTHER DURABLE MATERIAL TO INSURE THAT THIS PORTION REMAINS SMOOTH AND IS IN THE SAME PLANE AS THE PLATFORM. WHERE NECESSARY FOR DRAINAGE, THE REMAINING PORTION OF THE APPROACH MAY SLOPE SLIGHTLY.
  - WORK FROM CENTERLINES WHEN ERECTING FORMS AND PLACING FOUNDATION BOLTS. PLACE BOLTS TO WITHIN  $\pm 1/8"$  OF POSITIONS INDICATED ON DRAWING. (BOLTS MUST BE PLACED WITHIN  $\pm 1/8"$  OF TOTAL DIMENSIONS FROM CENTERLINE OF SCALE.)
  - ADEQUATE PROVISION MUST BE MADE FOR READY ACCESS TO THE PIT FOR INSPECTION OR MAINTENANCE. 24" DIA. MANHOLES ARE OPTIONALLY FURNISHED BY FAIRBANKS SCALES WHEN ORDERED. (SYM. NO. 5500B).
  - APPROXIMATELY 13 CU. YD. OF CONCRETE IS REQUIRED FOR THE PLATFORM SLABS. USE  $f'c = 4000$  PSI CONCRETE.
  - VEHICLES SHOULD ENTER AND EXIT SCALE FROM APPROACHES ONLY. ALL CROSS TRAFFIC SHOULD BE RESTRICTED.
  - IT IS RECOMMENDED THAT THE WEIGHBRIDGE BE ASSEMBLED AND BLOCKED IN THE PIT BEFORE THE LOAD CELL ASSEMBLIES ARE ASSEMBLED AND INSTALLED.
  - WHEN WELDING IN PIT OR ON WEIGHBRIDGE, LOAD CELLS MUST BE DISCONNECTED AND LEADS TAPED TO PREVENT THEM FROM TOUCHING EACH OTHER AND FROM GROUNDING.
  - CAST-IN-PLACE ANCHOR BOLTS ARE NOT REQUIRED AT PIERS. BUT ARE REQUIRED IN THE WALLS FOR CHECKING SYSTEM.
  - TOPS OF ALL PIERS MUST BE SMOOTH, FLAT & LEVEL, FOR LOAD CELL BASE PLATES TO BEAR PROPERLY.



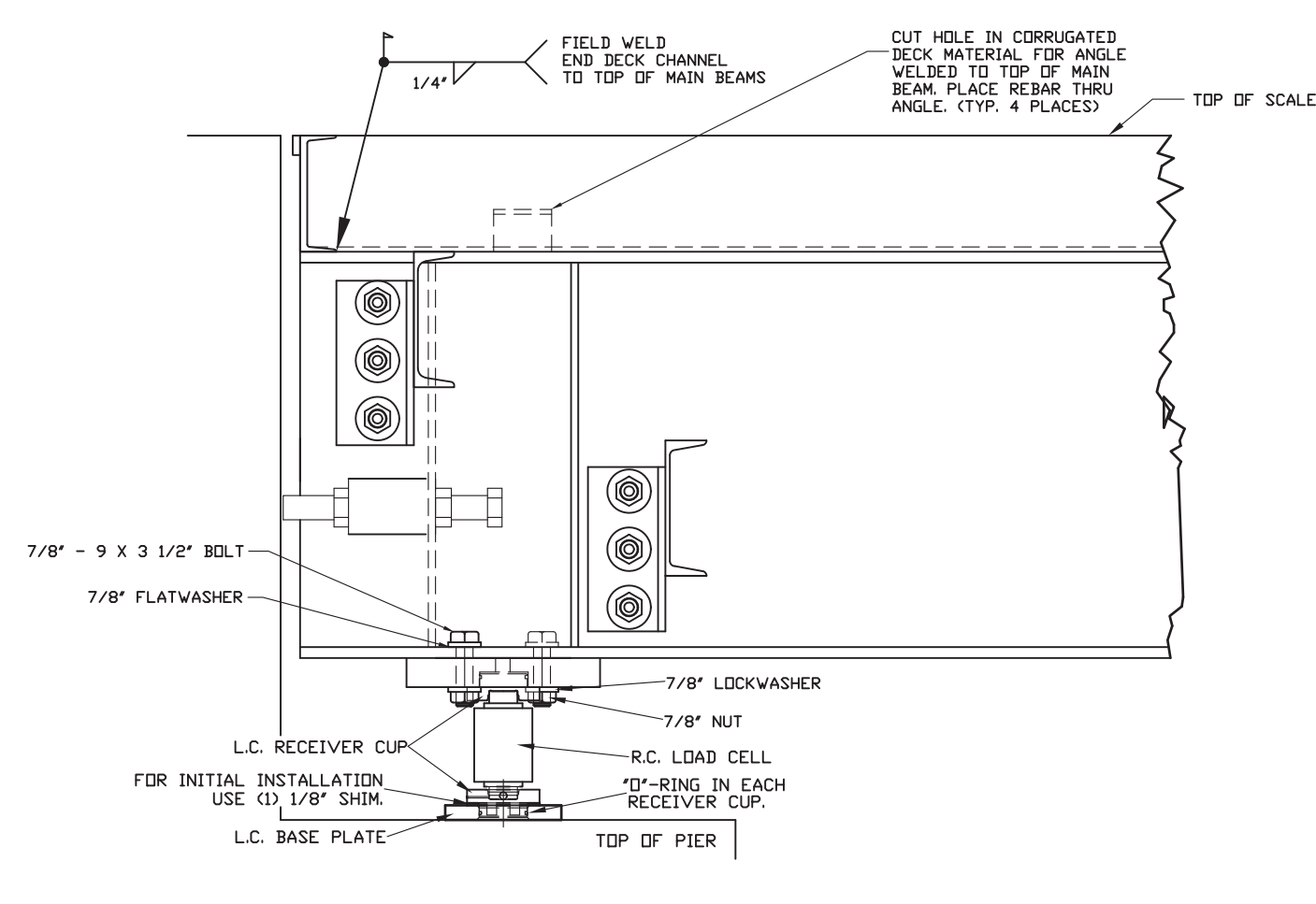
END WALL CHECKING DETAIL TYPICAL FOR EACH END WALL



SECTION A-A



LOAD CELL CENTER ASSEMBLY DETAIL



LOAD CELL END ASSEMBLY DETAIL

LET	BY	DATE	REVISION
A	SLS	1/19/00	REVISED WALL CHECKING HEIGHT
B	BT	2/21/00	REVISED CHECK BEAM DETAIL
C	BT	10/00	REVISED SECT A-A
D	SLS	11/00	REVISED ANCHOR BOLTS

<p><b>FAIRBANKS SCALES</b> Meridian, Mississippi</p>	
<p>15'-15'-40' X 10' HIGHWAY SYSTEM SETTING PLAN FULL ELECTRONIC CAP. 100 TON 70K CLC 7 SECTION</p>	
date	10/25/99
scale	N/A
in. per ft.	1
sheet	1 of 1
drawn by	GSB
checked by	
approved by	
<p>PLT-2600RC-5MOHS2</p>	
<p>D91519-SP</p>	