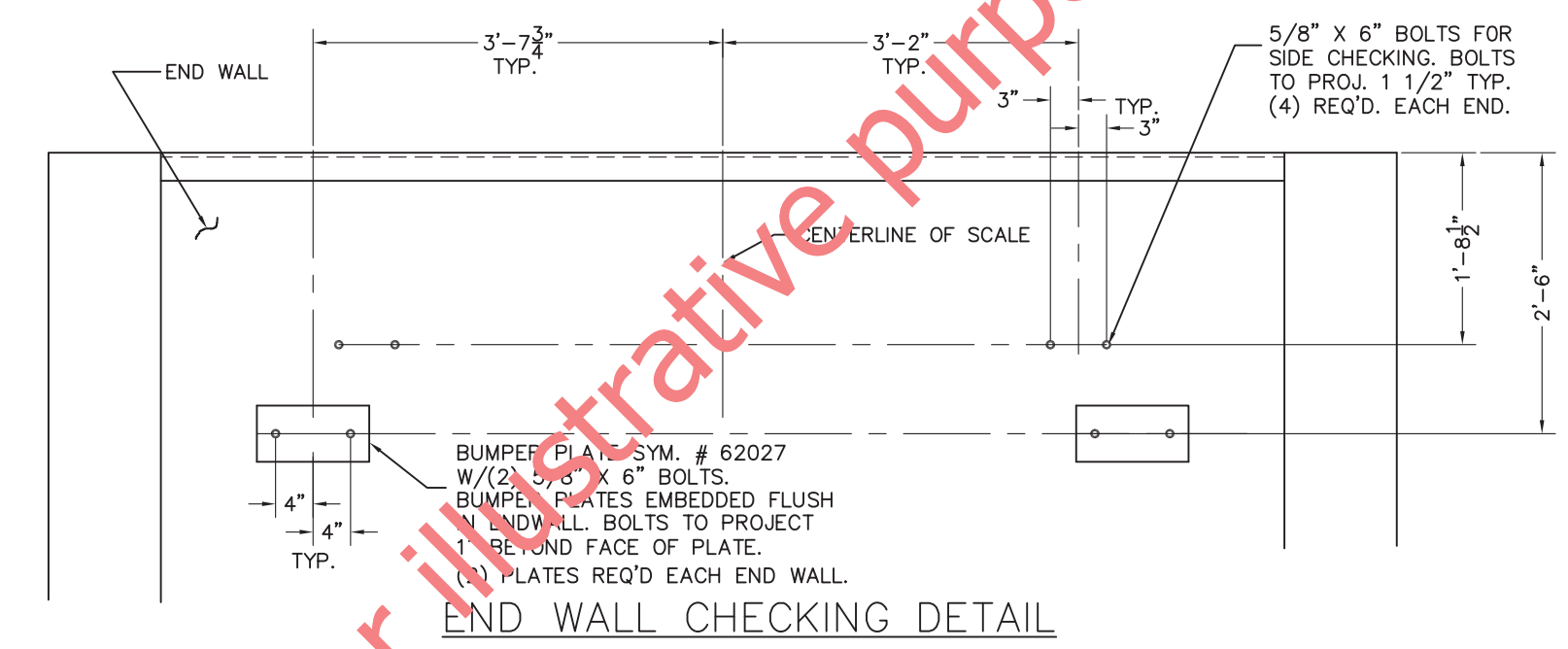
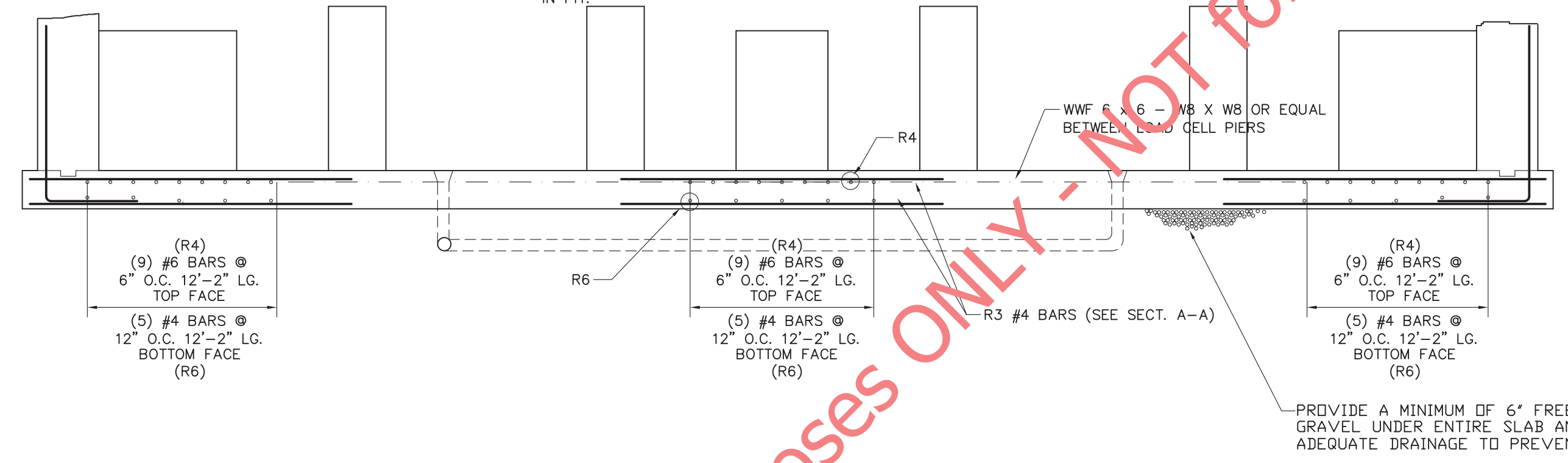
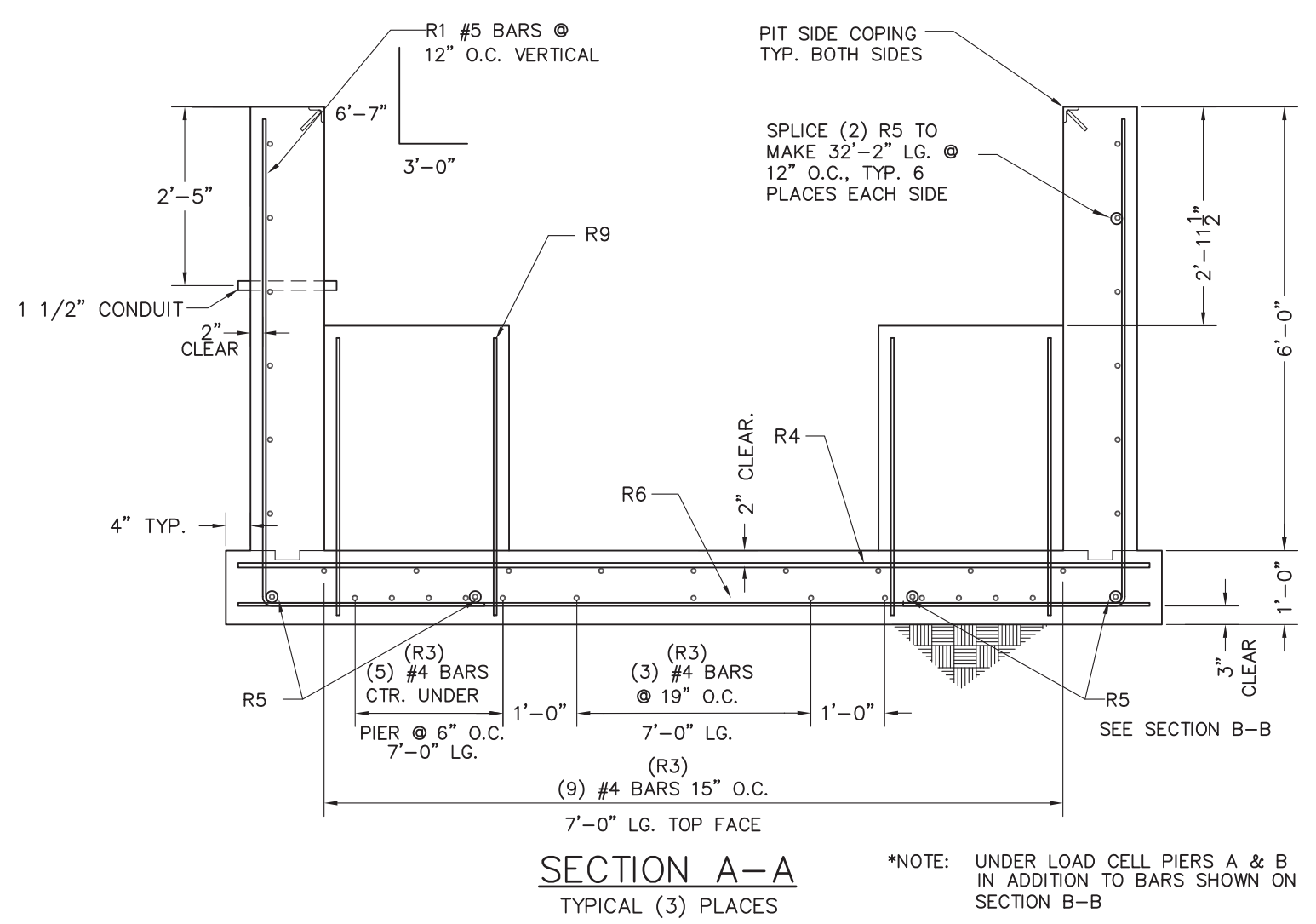


REINFORCING BAR SCHEDULE					
SYM.	QTY.	SIZE	LENGTH	WEIGHT	
R1	64	#5	9'-7"	6'-7" 3'-0"	640
R2	22	#6	7'-10"	5'-10" 24"	259
R3	66	#4	7'-0"	7'-0"	309
R4	27	#6	12'-2"	12'-2"	493
R5	32	#4	18'-0"	18'-0"	385
R6	15	#4	12'-2"	12'-2"	122
R7	10	#4	11'-6"	11'-6"	77
R8	10	#4	4'-0"	2'-0" 2'-0"	53
R9	56	#4	3'-7"	3'-7"	134
REINFORCING BAR SCHEDULE FOR APPROACHES					
R10	22	#4	10'-0"	10'-0"	147
R11	22	#4	11'-8"	11'-8"	171
TOTAL				2790	

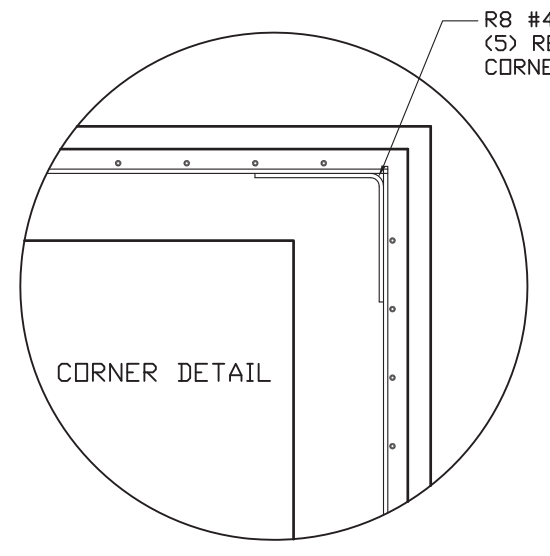
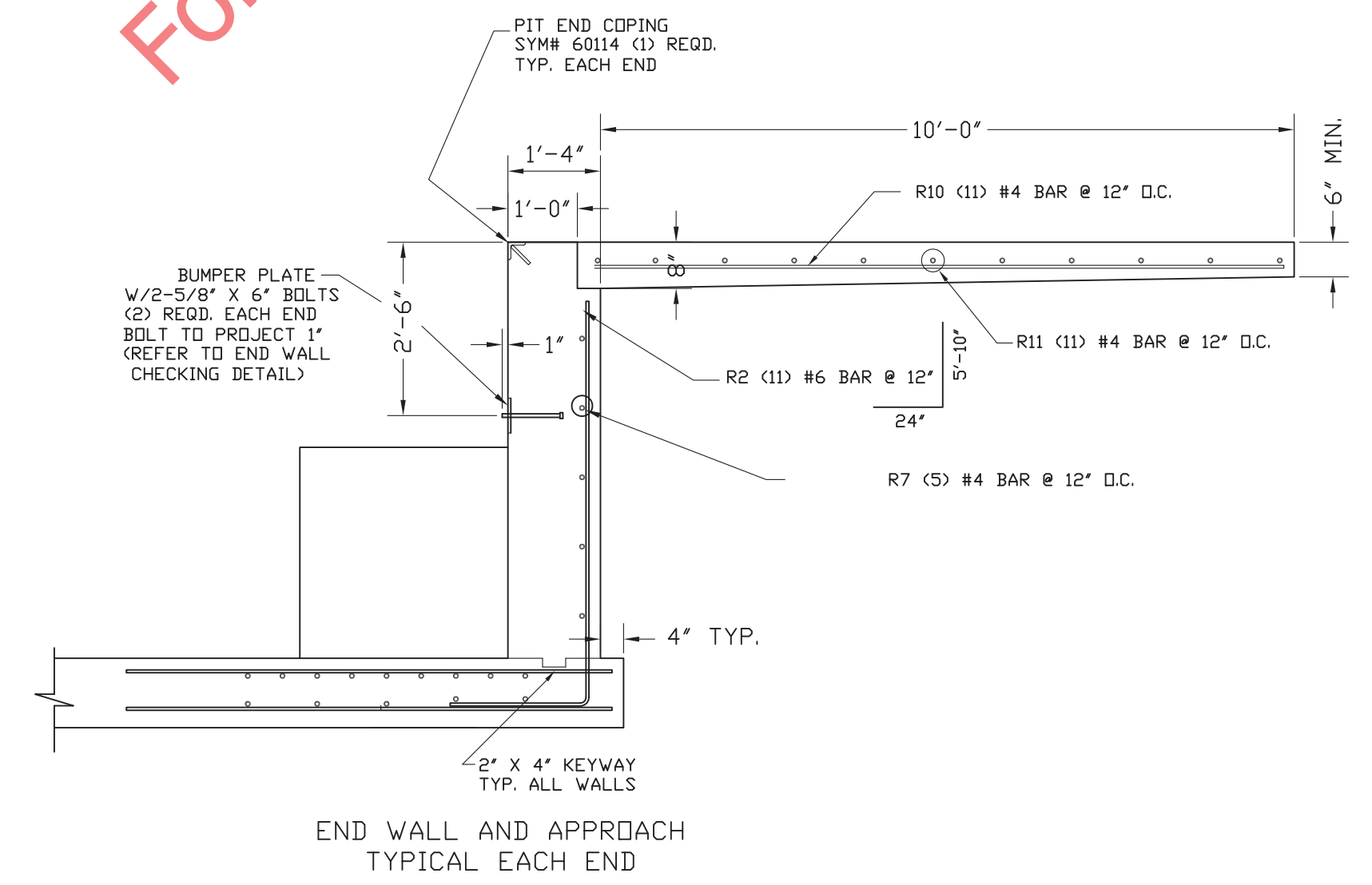
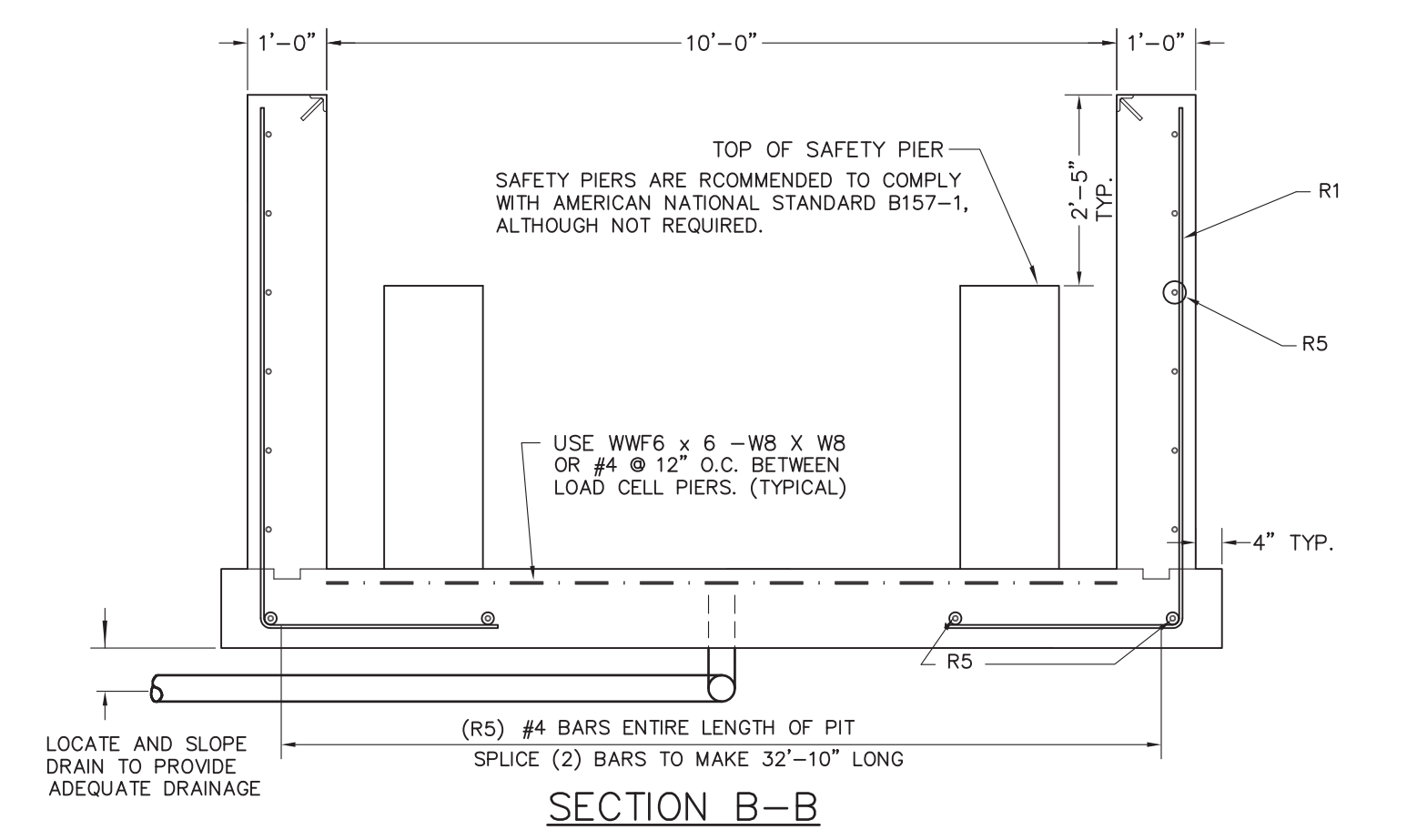
PLUS APPROX. 265 SQUARE FEET OF WWF 6 x 6 - W8 X W8

- GENERAL NOTES
- EXCAVATION, FOUNDATION FORMS, REBARS, AND CONCRETE IS TO BE FURNISHED BY CONTRACTOR OR CUSTOMER.
 - REINFORCING BARS ARE TO EQUAL ASTM A615, GRADE 60. BEND BARS COLD TO CONFORM WITH REQUIRED DETAILS. REMOVE SCALE, LOOSE FLAKY RUST, DIRT, AND OTHER COATING THAT WOULD IMPAIR BONDING. SPACE BARS PROPERLY AND TIE SECURELY IN POSITION BEFORE PLACING CONCRETE. TACK WELDING TO KEEP REINFORCING IN PLACE IS NOT PERMITTED.
 - MATERIAL AND WORKMANSHIP TO BE IN ACCORDANCE WITH CURRENT AMERICAN CONCRETE INSTITUTE (ACI) CODE REQUIREMENTS. ALL CONCRETE TO BE A MINIMUM OF 3000 P.S.I. @ 28 DAYS.
 - 1500 P.S.F. MINIMUM SOIL BEARING CAPACITY IS REQUIRED. THE DESIGN IS ADEQUATE FOR HIGHWAY SURCHARGE OR 300 P.S.F. ADJACENT TO PIT WALLS.
 - REFER TO SJ MANUAL 3884 FOR MORE DETAILED INSTRUCTIONS ON PIT CONSTRUCTION RECOMMENDATIONS.
 - WORK FROM CENTERLINES WHEN ERECTING FORMS AND PLACING FOUNDATION BOLTS. PLACE BOLTS TO WITHIN 1/4" OF POSITIONS INDICATED ON DRAWINGS. (BOLTS MUST BE PLACED WITHIN 1/4" OF TOTAL DIMENSIONS FROM CENTERLINE OF SCALE.)
 - FOR SETTING PLAN, SEE DRAWING D91374-SP.
 - CLEARANCE DIMENSION FOR BOTTOM OF MAIN GIRDER TO PIT FLOOR IS 45".
 - VARIOUS STATE WEIGHTS AND MEASURES AUTHORITIES HAVE REGULATIONS, PARTICULARLY IN REGARD TO PIT DEPTH AND APPROACHES, AFFECTING FIT AND INSTALLATION. THE PIT CONTRACTOR IS RESPONSIBLE TO VERIFY THAT THIS PLAN AND INSTALLATION MEETS LOCAL MINIMUM REQUIREMENTS. FOR ASSISTANCE, CONTACT NEAREST FAIRBANKS SCALE OFFICE.
 - SOME STATES REQUIRE THAT CONCRETE PIERS BE POUR MONOLITHIC WITH SIDE WALLS. (RECOMMENDED METHOD)
 - SUITABLE CONDUIT FOR LOW VOLTAGE CONDUCTOR SHIELDED CABLE MUST PASS THRU THE PIT WALL AT ANY POINT ABOVE PIER TOPS THAT IS CONVENIENT. CONDUIT MUST EXTEND BEYOND PIT WALL A MINIMUM OF 2'. FOR RUNS OF CONDUIT UP TO 50'-0" IN LENGTH, USE 1 1/2" CONDUIT. AVOID RUNNING CABLE IN CLOSE PROXIMITY TO HIGH VOLTAGE LINES. IF AS IS REQUIRED IN PIT, IT SHALL NOT RUN CLOSER THAN 24" IN PARALLEL TO ANY CABLE.
 - CAST-IN-PLACE ANCHOR BOLTS ARE NOT REQUIRED AT PIERS, BUT ARE REQUIRED IN THE END WALLS FOR CHECKING SYSTEM.
 - TOPS OF ALL PIERS MARKED "A" OR "B" MUST BE SMOOTH, FLAT, AND LEVEL FOR LOADCELL BASE PLATES TO BEAR PROPERLY.



APPROX. CONCRETE REQ'D.	
SLAB/PIERS	36 CU. YDS.
WALLS	20 CU. YDS.
APPROACHES	5 CU. YDS.
TOTAL W/O SAFETY PIERS	61 CU. YDS.
TOTAL W/ SAFETY PIERS	63 CU. YDS.

APPROX. EXCAVATION QTY = 163 CU. YDS. (BASED ON 2'-0" CLEARANCE AROUND SIDE OF PIT)



LET BY	DATE	REVISION	FAIRBANKS SCALES	
			Meridian, Mississippi	
			30' X 10' REINFORCED PIT	
			3-SECTION FULL ELECTRONIC	
			CAP. 85 TON 70K CLC	
			PLT-2600RC-5E0	
			DATE	4/26/01
			SHEET	N/A
			PER	1
			OF	1
			DRAWN BY	BK
			6' DEEP PIT	
			CHECKED BY	
			APPROVED BY	D91374-RP6