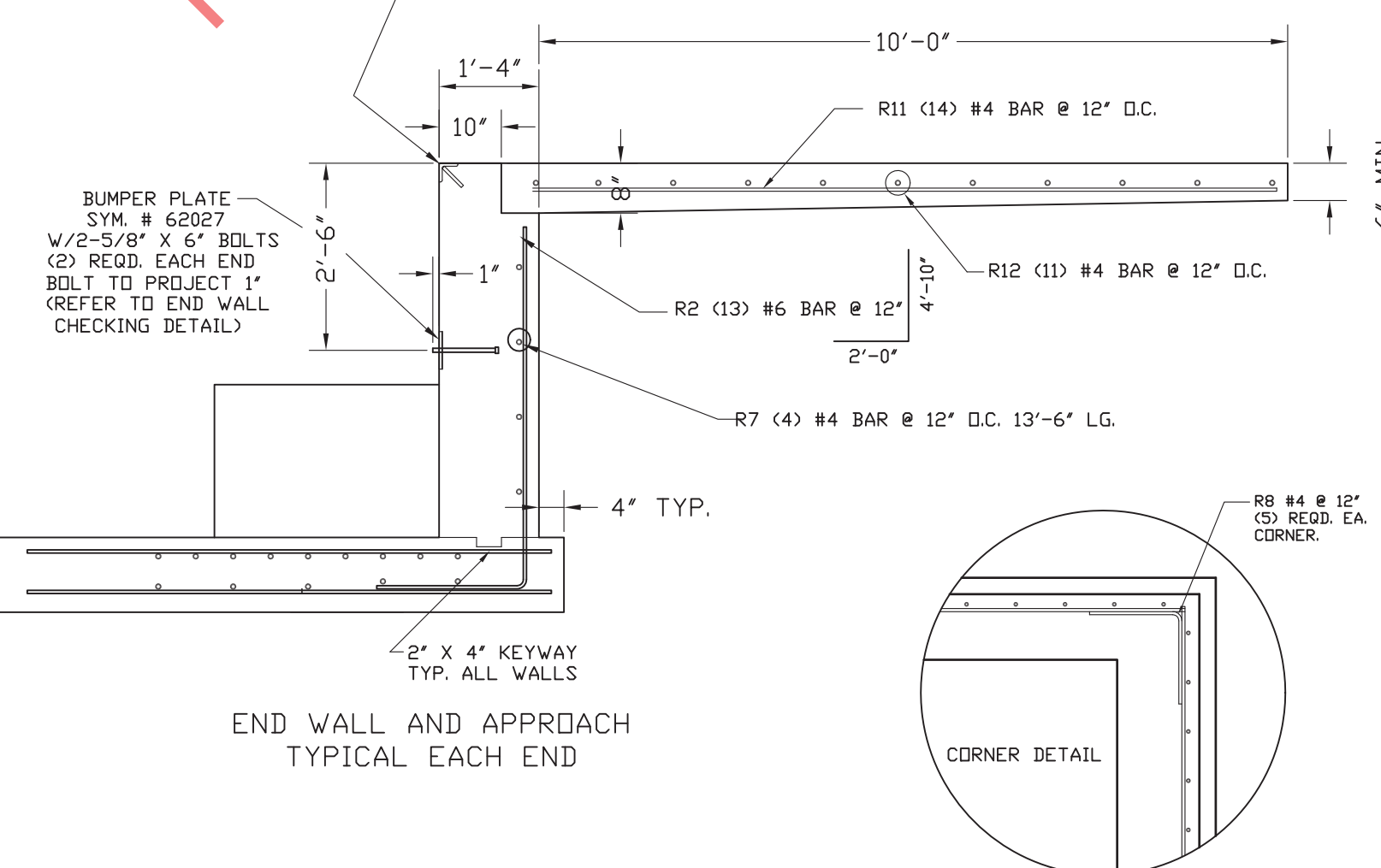
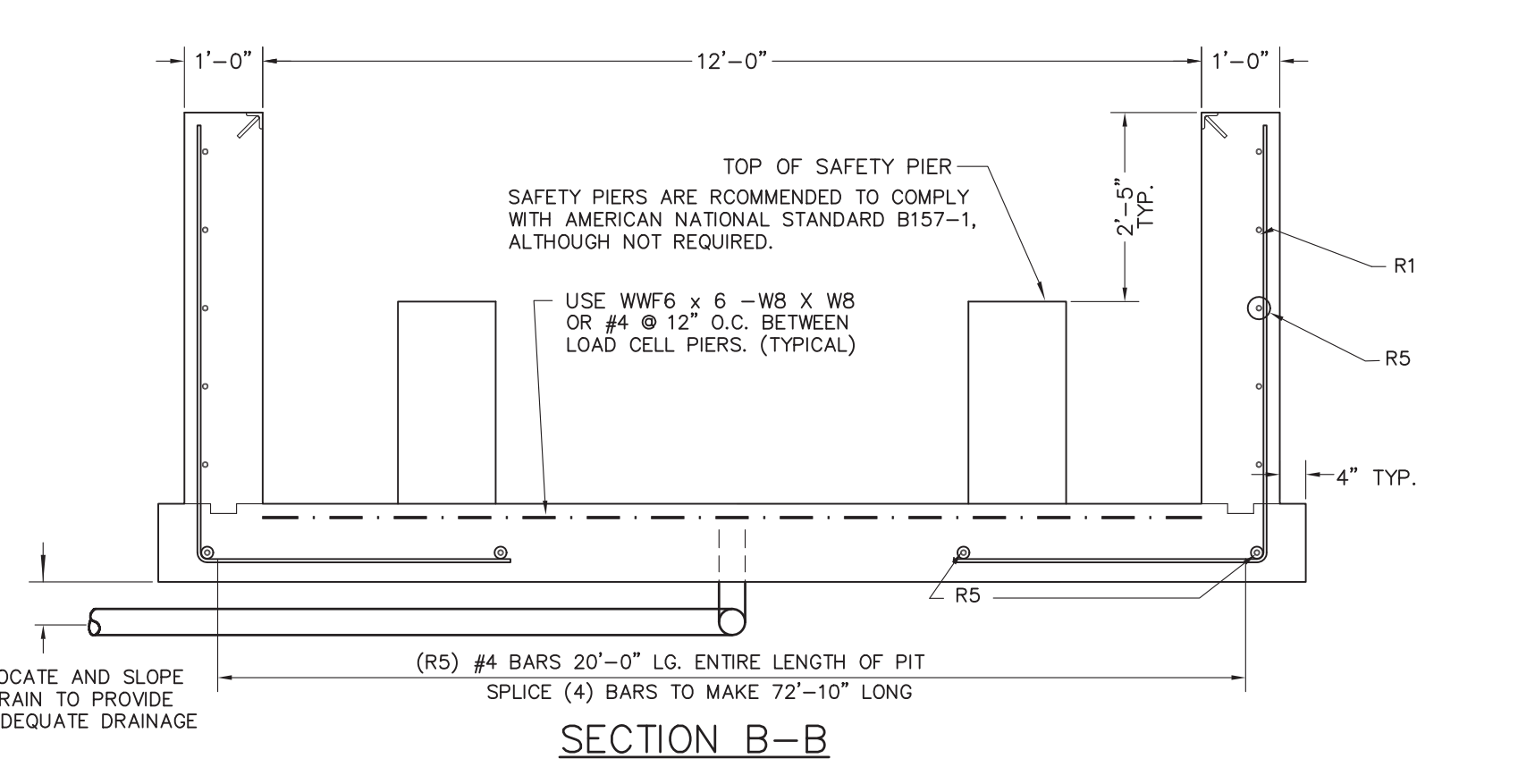


REINFORCING BAR SCHEDULE					
SYM.	QTY.	SIZE	LENGTH	BENDING	WEIGHT
R1	144	#4	9'-7"	5'-7"   4'-0"	922
R2	26	#6	6'-10"	4'-10"   24"	267
R3	140	#4	7'-0"	7'-0"	655
R4	45	#6	14'-2"	14'-2"	958
R5	70	#4	20'-0"	20'-0"	935
R6	25	#4	14'-2"	14'-2"	237
R7	8	#4	13'-6"	13'-6"	72
R8	20	#4	4'-0"	2'-0"   2'-0"	53
R9	40	#4	2'-7"	2'-7"	69
R10	64	#4	2'-10"	2'-10"	121
REINFORCING BAR SCHEDULE FOR APPROACHES					
R11	28	#4	10'-0"	10'-0"	187
R12	22	#4	13'-6"	13'-6"	198
TOTAL					4,674

PLUS APPROX. 546 SQUARE FEET OF WWF 6 x 6 - W8 X W8

- GENERAL NOTES:
- EXCAVATION, FOUNDATION FORMS, REBARS, AND CONCRETE IS TO BE FURNISHED BY CONTRACTOR OR CUSTOMER.
  - REINFORCING BARS ARE TO EQUAL ASTM A615, GRADE 50 OR 60. BEND BARS COLD TO CONFORM WITH REQUIRED DETAILS. REMOVE SCALE, LOOSE FLAKY RUST, DIRT, AND OTHER COATING THAT WOULD IMPAIR BONDING. SPACE BARS PROPERLY AND TIE SECURELY IN POSITION BEFORE PLACING CONCRETE. TACK WELDING TO KEEP REINFORCING IN PLACE IS NOT PERMITTED.
  - MATERIAL AND WORKMANSHIP TO BE IN ACCORDANCE WITH CURRENT AMERICAN CONCRETE INSTITUTE (ACI) CODE REQUIREMENTS. ALL CONCRETE TO BE A MINIMUM OF 3000 P.S.I. @ 28 DAYS.
  - 1500 P.S.F. MINIMUM SOIL BEARING CAPACITY IS REQUIRED. THE DESIGN IS ADEQUATE FOR HIGHWAY SURCHARGE OR 300 P.S.F. ADJACENT TO PIT WALLS.
  - REFER TO SJ MANUAL 3884 FOR MORE DETAILED INSTRUCTIONS ON PIT CONSTRUCTION RECOMMENDATIONS.
  - WORK FROM CENTERLINES WHEN ERECTING FORMS AND PLACING FOUNDATION BOLTS. PLACE BOLTS TO WITHIN +/- 1/8" OF POSITIONS INDICATED ON DRAWINGS. (BOLTS MUST BE PLACED WITHIN +/- 1/8" OF TOTAL DIMENSIONS FROM CENTERLINE OF SCALE.)
  - FOR SETTING PLAN, SEE DRAWING D91390-SP.
  - CLEARANCE DIMENSION FOR BOTTOM OF MAIN GIRDER TO PIT FLOOR IS 33".
  - VARIOUS STATE WEIGHTS AND MEASURES AUTHORITIES HAVE REGULATIONS, PARTICULARLY IN REGARD TO PIT DEPTH AND APPROACHES, AFFECTING PIT AND INSTALLATION. THE PIT CONTRACTOR IS RESPONSIBLE TO VERIFY THAT THIS PLAN AND INSTALLATION MEETS LOCAL MINIMUM REQUIREMENTS. FOR ASSISTANCE, CONTACT NEAREST FAIRBANKS SCALE OFFICE.
  - SOME STATES REQUIRE THAT CONCRETE PIERS BE POUR MONOLITHIC WITH SIDE WALLS. (RECOMMENDED METHOD)
  - SUITABLE CONDUIT FOR LOW VOLTAGE CONDUCTOR SHIELDED CABLE MUST PASS THRU THE PIT WALL AT ANY POINT ABOVE PIER TOPS THAT IS CONVENIENT. CONDUIT MUST EXTEND BEYOND PIT WALL A MINIMUM OF 2'. FOR RUNS OF CONDUIT UP TO 50'-0" IN LENGTH, USE 1 1/2" CONDUIT. AVOID RUNNING CABLE IN CLOSE PROXIMITY TO HIGH VOLTAGE LINES. IF AS IS REQUIRED IN PIT, IT SHALL NOT RUN CLOSER THAN 24" IN PARALLEL TO ANY CELL CABLE.
  - CAST-IN-PLACE ANCHOR BOLTS ARE NOT REQUIRED AT PIERS, BUT ARE REQUIRED IN THE END WALLS FOR CHECKING SYSTEM.
  - TOPS OF ALL PIERS MARKED "A" OR "B" MUST BE SMOOTH, FLAT, AND LEVEL FOR LOADCELL BASE PLATES TO BEAR PROPERLY.



APPROX. EXCAVATION QTY = 332 CU. YDS. (BASED ON 2'-0" CLEARANCE AROUND SIDE OF PIT)

APPROX. CONCRETE REQ'D.	
SLAB/PIERS	46 CU. YDS.
WALLS	33 CU. YDS.
APPROACHES	6 CU. YDS.
TOTAL W/O SAFETY PIERS	85 CU. YDS.
TOTAL W/ SAFETY PIERS	87 CU. YDS.

LET BY	DATE	REVISION
		MADE FROM D91390-RP4-V1

**FAIRBANKS SCALES**  
Meridian, Mississippi

70' X 12' REINFORCED PIT  
5-SECTION FULL ELECTRONIC  
CAP. 100 TON 70K CLC  
PLT-2600RC-5M2

DATE: 04/13/04  
SCALE: N/A  
SHEET: 1 OF 1  
DRAWN BY: LB  
MATERIAL: WISC. 5' DEEP PIT  
FINISH: D91390-RP5-WI

The material and information contained herein is confidential and is the property of Fairbanks Scales and shall not be used, disclosed, copied, transferred or reproduced without the prior written permission of Fairbanks.

Unless otherwise specified dimensions are in inches. Tolerances: Fractions: 1/8" Angles: 1" 3 place decimals 2 place decimals Hole diameter: +/- .02"

checked by: approved by: