

REINFORCING BAR SCHEDULE					
SYM.	QTY.	SIZE	LENGTH	BENDING	WEIGHT
R1	162	#4	7'-6"	4'-6" 3'-0"	812
R2	12	#4	9'-0"	9'-0"	72
R3	8	#4	7'-0"	7'-0"	411
R4	10	#6	10'-10"	10'-10"	586
R5	48	#4	20'-0"	20'-0"	641
R6	20	#4	10'-10"	10'-10"	145
TOTAL					2,667
PLUS APPROX. 800 SQUARE FEET OF WWF 6 x 6 - W8 x W8					

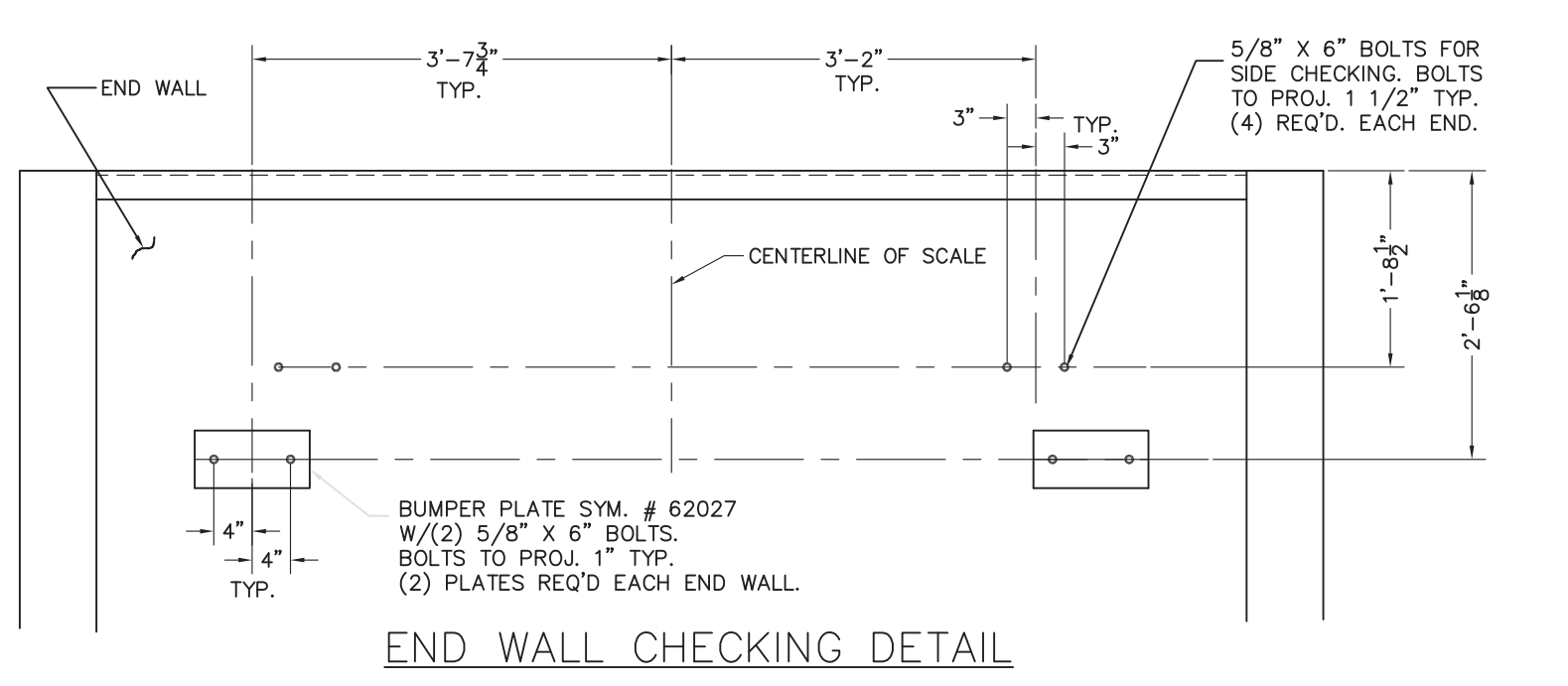
NOTE: SEE SECTION A-A FOR PIER REINFORCING NOTE. PIER REINFORCING IS NOT SHOWN IN THE ABOVE TABLE.

APPROX. CONCRETE REQ'D.	
SLAB/PIERS	35 CU. YDS.
WALLS	19 CU. YDS.
APPROACHES	7 CU. YDS.
TOTAL W/O SAFETY PIERS	61 CU. YDS.
TOTAL W/ SAFETY PIERS	62 CU. YDS.

APPROX. EXCAVATION QTY = 293 CU. YDS. (BASED ON 2'-0" CLEARANCE AROUND SIDE OF PIT). COMPACT FILL PER LOCAL REQ'TS.

GENERAL NOTES:

- EXCAVATION, FOUNDATION FORMS, REBARS, AND CONCRETE IS TO FURNISHED BY CONTRACTOR OR CUSTOMER.
- REINFORCING BARS ARE TO EQUAL ASTM A615, GRADE 60. BEND BARS COLD TO CONFORM WITH REQUIRED DETAILS. REMOVE SCALE, LOOSE FLAKY RUST, DIRT, AND OTHER COATINGS THAT WOULD IMPAIR BONDING. SPACE BARS PROPERLY AND TIE SECURELY IN POSITION BEFORE PLACING CONCRETE. TACK WELDING TO KEEP REINFORCING IN PLACE IS NOT PERMITTED.
- MATERIAL AND WORKMANSHIP TO BE IN ACCORDANCE WITH CURRENT AMERICAN CONCRETE INSTITUTE (ACI) CODE REQUIREMENTS. ALL CONCRETE TO BE A MINIMUM OF 3000 P.S.I. @ 28 DAYS. DESIGN IS BASED ON 2500 P.S.I., THEREFORE SPECIAL INSPECTION IS NOT REQUIRED UNLESS OTHERWISE REQUIRED BY LOCAL BUILDING OFFICIAL.
- 1500 P.S.F. MINIMUM SOIL BEARING CAPACITY IS REQUIRED. THE DESIGN IS ADEQUATE FOR A HIGHWAY SURCHARGE OF 300 P.S.F. ADJACENT TO PIT WALLS. IF EXPANSIVE OR COLLAPSIBLE SOILS ARE DISCOVERED ASSISTANCE WILL BE REQUIRED. WATER TABLE SHALL NOT BE ABOVE BOTTOM OF PIT FLOOR SLAB.
- REFER TO MANUAL FOR MORE DETAILED INSTRUCTIONS ON PIT CONSTRUCTION RECOMMENDATIONS.
- WORK FROM CENTERLINES WHEN ERECTING FORMS AND PLACING FOUNDATION BOLTS. PLACE BOLTS TO WITHIN ± 1/8" OF POSITIONS INDICATED ON DRAWING. (BOLTS MUST BE PLACED WITHIN ± 1/8" OF TOTAL DIMENSIONS FROM CENTERLINE OF SCALE.
- FOR SETTING PLAN, SEE DRAWING D91367-SP.
- CLEARANCE DIMENSION FOR BOTTOM OF MAIN GIRDER TO PIT FLOOR IS 20 7/8".
- VARIOUS STATE WEIGHTS & MEASUREMENTS AUTHORITIES HAVE REGULATIONS, PARTICULARLY IN REGARD TO PIT DEPTH AND APPROACHES, AFFECTING PIT AND INSTALLATION. THE PIT CONTRACTOR IS RESPONSIBLE TO VERIFY THAT THIS PLAN AND INSTALLATION MEETS LOCAL MINIMUM REQUIREMENTS. FOR ASSISTANCE CONTACT NEAREST FAIRBANKS SCALES OFFICE.
- SUITABLE CONDUIT FOR LOW VOLTAGE CONDUCTOR SHIELDED CABLE MUST PASS THRU THE PIT WALL AT ANY POINT ABOVE PIER TOPS THAT IS CONVENIENT. CONDUIT MUST EXTEND BEYOND PIT WALL A MINIMUM OF 2". FOR RUNS OF CONDUIT UP TO 50'-0" IN LENGTH, USE 1 1/2" CONDUIT. AVOID RUNNING CABLE IN CLOSE PROXIMITY TO HIGH VOLTAGE LINES. IF AC IS REQUIRED IN PIT, IT SHALL NOT RUN CLOSER THAN 24" IN PARALLEL TO ANY LOAD CELL CABLE.
- CAST-IN-PLACE ANCHOR BOLTS ARE NOT REQUIRED AT PIERS, BUT ARE REQUIRED IN THE END WALLS FOR CHECKING SYSTEM.
- TOPS OF ALL PIERS MARKED "A" OR "B" MUST BE SMOOTH, FLAT, AND LEVEL FOR LOADCELL BASE PLATES TO BEAR PROPERLY.
- SOME STATES REQUIRE THAT CONCRETE PIERS BE POUR MONOLITHIC WITH SIDE WALLS. (RECOMMENDED METHOD)
- IF EXPANSIVE OR COLLAPSIBLE SOILS ARE DISCOVERED, SPECIAL ENGINEERING ASSISTANCE WILL BE REQUIRED. WATER TABLE SHALL NOT BE ABOVE BOTTOM OF PIT FLOOR SLAB.



LET	BY	DATE	REVISION
A	REC	1/6/05	REV GEN NOTES, SECT A-A, MSC

FAIRBANKS SCALES	
Meridian, Mississippi	
80' X 10' REINFORCED PIT	
4-SECTION FULL ELECTRONIC	
CAP. 75 TON 45K CLC	
PLT-2600RC-200	
date	9/5/00
scale	N/A
sheet	1 of 1
drawn by	SLS
checked by	
approved by	D91367-RP4-CA