

FAIRBANKS® S C A L E S



LABELBANK/DATABANK BAR CODE LABELING AND DATA COLLECTION SYSTEM

Total system solution for industrial bar code labeling and data collection that is ethernet ready and includes a touch screen interface, unlimited storage and configurable backup.

LABELBANK/DATABANK

BAR CODE LABELING AND DATA COLLECTION SYSTEM

Product challenge: For years, companies have had to take an à la carte approach when purchasing bar code labeling systems — pulling together required components from various hardware, software and printer manufacturing vendors. This approach is typically complicated and always time consuming.

Product solution: LabelBank/DataBank, a turnkey, one-stop bar code labeling and data collection system from Fairbanks Scales.

LabelBank/DataBank not only offers purchasing convenience, it features:

- Superior speed and advanced data acquisition and labeling.
- User-friendly bar coding software that's easy to navigate with the FB4000 NEMA 4X touch screen instrument.
- Factory-installation with Fairbanks instrument purchase.
- Virtually unlimited product information storage and data storage/communication capabilities.
- Configurable data backup.

Fairbanks LabelBank/DataBank Bar Code Labeling System offers all the components needed to build a single- or multi-unit bar code labeling system. (See graphic illustration below, center). Components include:

LabelBank — A graphically-enhanced labeling software interface that features easy controls and printer communications.

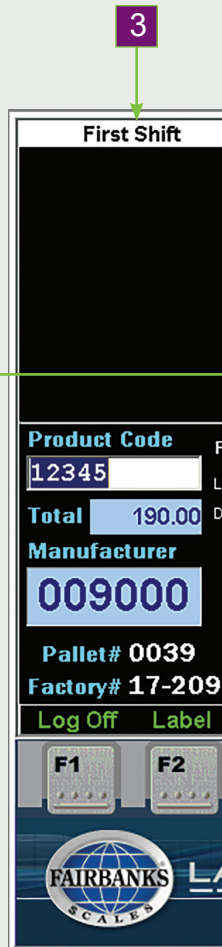
DataBank — A software component that stores and maintains all product data, security information and transaction information. DataBank runs alongside LabelBank in a single-station system and is designed to operate independently in a multi-station labeling application.

FB4000 Solution Series Instrument — LabelBank/DataBank is made to run on Fairbanks' state-of-the-art FB4000 NEMA 4X Instrument — the only scale instrument that utilizes a Windows® 8.1 operating system. LabelBank/DataBank can also run on a personal computer (see back page for minimum system requirements).

Industrial Bar Code Label Printers — Fairbanks recommends that customers use a PM43 industrial printer, which offers superior performance in demanding applications and environments. However, customers can opt to use any of the hundreds of system-compatible bar code printer makes and models.

Exceptional LabelBank features:

- 1 Detailed product information** is visible onscreen and can be integrated into a printed label.
 - 10-digit product code
 - Product description
 - Packing date
 - Box number
 - Manufacturer code
 - Factory code
 - Pallet number
 - Station number
 - Lot number
 - Product count
 - Minimum/maximum weight parameters
- 2 Displayed weight** is graphically large and visually changes from green to red if product exceeds weight parameters.
- 3 Operator Login ID** is visibly displayed.
- 4 Error Messages** and the product's maximum and minimum weight limits are displayed in red to alert operator.
- 5 Selectable Function Keys (F1-F6)** give operators access to two standard function menus and seven optional function menus.
 - Keypad
 - Menu
 - Zero
 - Units
 - Print
 - Exit



Single-unit system

DataBank MySQL database is loaded with all product, manufacturer, and label information.

Operators use LabelBank to select products.

DataBank MySQL database and LabelBank software reside within the FB4000 Instrument or on a PC.



Multi-unit system

Network up to 64 LabelBank stations.

Generate reports for all stations from a central server.

MySQL server

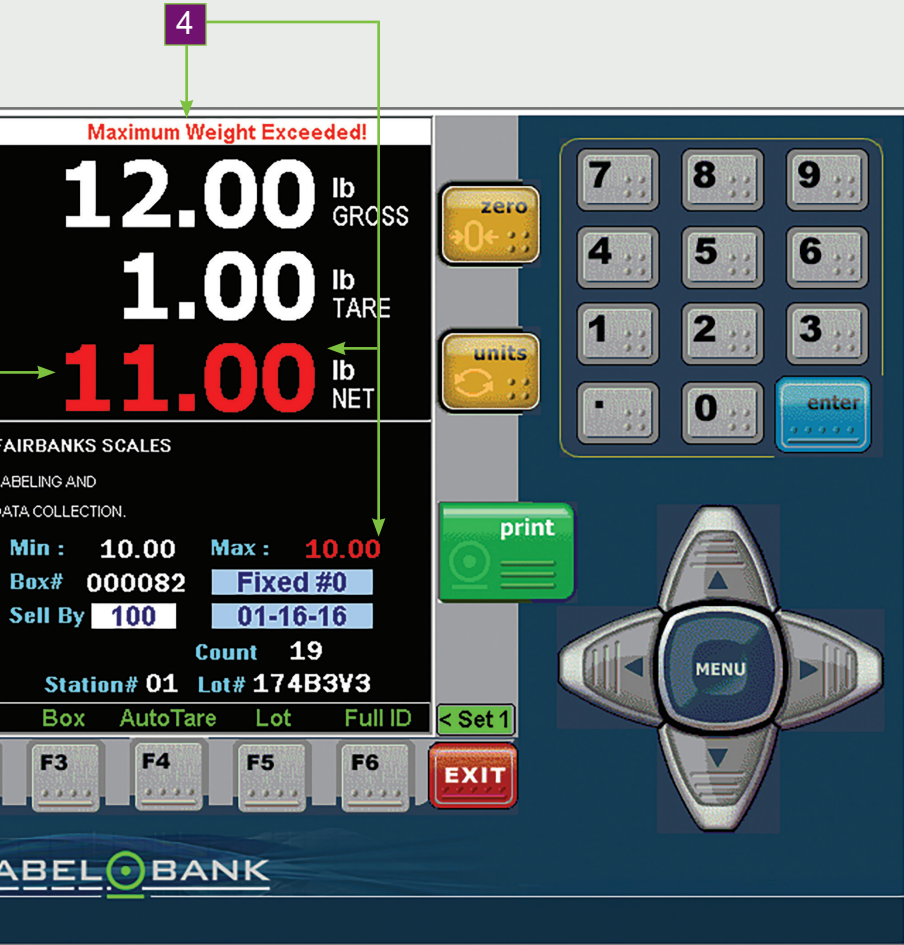
DataBank resides on a PC that polls data from LabelBank stations.

DataBank database resides on a personal computer.



Station options: FB4000 Instruments or PCs.

Ideal for general manufacturing, food processing, and countless unique applications across all industries.



LabelBank sends label information to a bar code printer.

Printer generates bar code labels.

DataBank communicates with LabelBank.

***System is compatible with more than 2,800 popular printer models.**

LabelBank stations

Operators use LabelBank to select products.

LabelBank stations send label information to bar code printers.

Printers

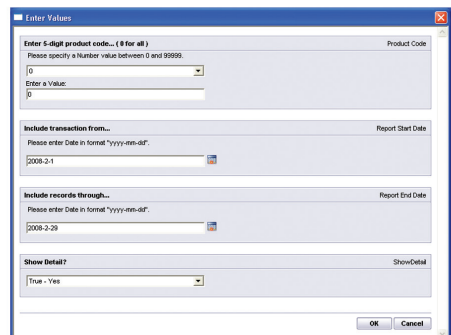
Printers generate bar code labels.

Bar code labels

The diagram illustrates the workflow: LabelBank stations are used by operators to select products. The stations then send label information to bar code printers, which generate bar code labels. An example label is shown with fields for Item # 12345, Case Qty 999, Net Wt. 1234.56 lb, Lot # 12345678901, and Pallet # 1234.

Data Reporting Options

LabelBank/DataBank includes date range selectable product and station reporting for quick operational analysis. All label data is stored permanently in DataBank for easy product information. For advanced reporting, ask your sales representative about **Ledger**, Fairbanks Scales' user friendly, web-based data collection reporting tool.



Standard report configuration screen.

LABELBANK/DATABANK

BAR CODE LABELING AND DATA COLLECTION SYSTEM

Weighing Solutions for the World Since 1830

Fairbanks.com

LABELBANK SPECIFICATIONS

Lot or ID number Alphanumeric
 Tare settings Automatic or manual
 Label print settings Automatic or manual
 Pallet print settings Automatic or manual
 Operating system Windows® compatible
 Weight display Color-coded 0.5" digits
 Touch screen operation Standard with
 FB4000 NEMA 4X Instrument
 Box label formats Unlimited
 Pallet label formats Unlimited
 Available "hot keys" 99
 Label reprint Standard feature
 Last box void Standard feature
 Selectable re-date Standard feature
 Viewable label information Standard feature
 Selectable security levels 5
 On-board reports By product or by station
 (date range selectable)
 Printers Compatible with hundreds of
 bar code printers
 Human interface Mouse/keyboard, touch screen
 Function keys User definable

DATABANK SPECIFICATIONS

Backup features On board
 Basic report features Included
 Database type MySQL
 Number of additional stations 64
 Selectable security levels 5
 Manufacturer codes Unlimited
 Distributor codes Unlimited
 Operator codes Unlimited
 Product/item files Unlimited
 Product description lines 7
 Visual station activity On screen

WORK STATION SPECIFICATIONS (Recommended)

Construction 304 stainless steel
 Handles Retractable
 Legs Adjustable height
 Assembly Required



PM43 INDUSTRIAL BAR CODE LABEL PRINTER (Recommended)

PM43 print method Direct thermal (optional thermal transfer)
 Print speed 4 to 12 inches per second (selectable)
 Casing Mild steel
 Print resolution 203/300 dpi
 Maximum print width 4.25"
 Maximum label length/width 43 inches/4.5 inches
 Interface RS232/USB
 Memory 128 MB Flash/128 SDRAM
 Options Stainless steel NEMA 4X enclosure,
 thermal transfer ribbon



FB4000 NEMA 4X INSTRUMENT (Recommended)

Display 10.4" Color SVGA - 600 x 800
 Dimensions with stand 17.94" x 14.93" x 7.0"
 Memory 4 GB RAM
 Processor 1.86 GHz
 Storage 32 GB CFast drive
 Enclosure Stainless steel, NEMA 4X
 Device platform Windows® 8.1 embedded
 Outputs 2 USB 2.0 ports (externally accessible),
 1 USB 2.0 port (internal),
 3 Serial ports (internal),
 1 RJ45 port for network connection (internal),
 1 HDMI port (internal),
 10/100/1000 Mbps ethernet controller
 (internal)
 Human interface Touch screen
 Number of scales One
 Approvals NTEP CC# 15-064
 MC# AM-5997



PC SPECIFICATIONS (Minimum) (Recommended)

	(Minimum)	(Recommended)
Operating system	Windows® 7 Pro	Windows® 10
Processor speed	1 GHZ	1.86 GHz
Hard drive	10 GB	32 GB
Memory	512 MB RAM	4 GB RAM

Your Fairbanks Scales Authorized Representative is:

Call toll-free for the representative nearest you:

(800) 451-4107

Call between 8:00 a.m. – 5:00 p.m. Central Time

Corporate Headquarters: 6800 W. 64th Street, Overland Park, Kansas 66202

(816) 471-0231 Internet Address: <http://www.Fairbanks.com>

