

FAIRBANKS[®]

S C A L E S



FB2550 SERIES DAT

DRIVER ASSIST TERMINAL

A versatile Driver Assist Terminal that streamlines weighing processes and reduces operating costs.

FB2550 SERIES DAT

DRIVER ASSIST TERMINAL

• Agriculture • Solid Waste • Aggregates • Recycling • Mining • Natural Resources

The FB2550 Series Driver Assist Terminal is designed to speed the vehicle weighing process and reduce associated operating costs. By allowing drivers to remain inside their vehicles, the FB2550 DAT also eliminates safety concerns and liabilities that can occur when drivers walk across scale platforms and traffic lanes.

The FB2550 DAT's reduction in weighment time increases scale throughput and overall efficiency. The FB2550 DAT also enables 24-hour operation without additional labor costs and has built-in ethernet connectivity that easily interfaces scale transaction data with a company's existing computer network.

Large, full-color graphic display with touchscreen. Large text and simple to understand prompts allow drivers to process weighments with ease.

Function keys allow drivers to recall Product, Customer or Inbound weight information at the touch of a button.

Optional metalized vandal-resistant alpha keyboard for applications in which alpha data is required.

Optional printer enclosure with locking latch for added security.

Optional shroud provides additional protection and sun shield for the terminal.

Large numeric keys are easy to see and use, making weighments fast and easy to process.

Terminal enclosure latches can be locked for added security.

Optional Intercom speaker allows driver to communicate with office when the need arises.

Optional proximity card reader, bar code card reader or magnetic card reader speeds up the process of vehicle identification. Simply swipe or present the card to begin the weighing transaction. Long range RFID readers also available.

Ticket dispenser

**REDUCE OPERATING COSTS WITH
THE FB2550 DRIVER ASSIST TERMINAL**



NTEP and MC approved
for use in commercial
weighing applications.



FB2550 DAT WEIGHING PROCESS

1. Inbound-Outbound Screen

Truck pulls onto the scale platform and the process begins when the driver selects inbound or outbound weighing. In many applications, this screen can be bypassed so the process begins with the ID Entry Screen below.

5. Optional Variable ID Prompt

Customer specified information field. This information is stored in the transaction record, but not validated against the system database. Ten programmable fields are available.

2. ID Entry Screen

Driver is prompted to enter the Truck ID or swipe an ID card. FB2550 DAT reader accessories include a proximity, magnetic or bar code card reader.

6. Optional Review Screen

Provides the driver an opportunity to review the entered information before generating a ticket. If changes are needed, the driver can select the EDIT button to update the information.

3. Optional Customer ID Prompt

Optional prompt for Customer ID. Customer ID is validated against the system database.

7. Weight Processing Screen

Screen will show Gross, Tare and Net weights briefly, while the transaction is processing. Printing a ticket is optional.

4. Optional Product ID Prompt

Optional prompt for Product ID. Product ID is validated against the system database.

8. Process Conclusion Screen

Field programmable message that concludes the transaction. In this example, the message instructs the driver to take the ticket and exit the scale. Alternate messages are available for inbound and outbound transactions.

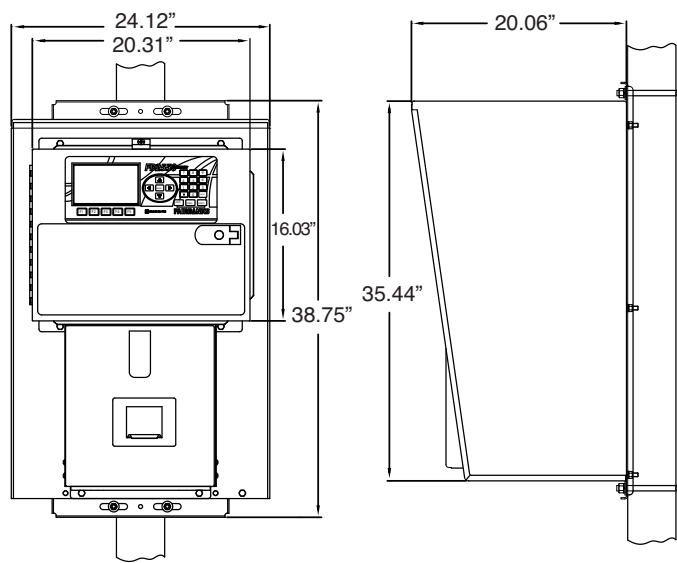
FB2550 SERIES DAT

DRIVER ASSIST TERMINAL

Weighing Solutions for the World Since 1830

Fairbanks.com

DIMENSIONS



SPECIFICATIONS

Enclosure Stainless steel NEMA 4X
 Processor Dual Core 1.6 GHz
 Memory 2 GB
 On-board storage 8 GB Mini PCIe
 Display 6.0" x 3.5", 7.0" diagonal, 800 x 480 resolution,
 TFT LCD with LED backlight,
 Full color graphic with active matrix
 Touch screen Standard
 Keypad Oversized keys: 0-9, Decimal point, Enter,
 5 Function keys, 8 Control keys
 Outputs One (1) RJ45 10/100/1000 Base-T Ethernet port,
 Three (3) RS232C ports:
 One (1) RS232C/RS485 selectable
 Two (2) dedicated RS232C,
 Four (4) USB ports:
 Three (3) USB 2.0
 One (1) USB for remote QWERTY keyboard,
 One (1) dedicated optically isolated 20mA
 Power requirements 100 to 130 VAC or 200 to 260 VAC; 50/60 Hz
 Clock Real time clock, Day of the week,
 12-hour am/pm, Date (month/day/year)

Displayed characters $\frac{3}{8}$ " tall
 Display resolution 10,000 divisions commercial,
 50,000 divisions for non-commercial
 Capacity Programmable to 999,999
 Displayed units 7 primary and 7 secondary
 Calibration &
 configuration Parameters can be configured locally at
 instrument or remotely by means of an ethernet
 connection and standard browser
 Programmable fields 10
 Product files 250,000
 Customer files 250,000
 Stored tares 500,000
 Transaction records 1,000,000 (10,000 with two images)
 Reports Seven (7) onboard configurable reports
 Networking Network and share data between (up to five)
 model FB2558 DATs
 Humidity 0 to 99%
 Accuracy Class III/IIIL
 Accessories Integrated intercom speaker,
 Bar code card reader,
 Magnetic card reader,
 Proximity card reader,
 Metalized alpha keyboard,
 Remote displays,
 IP network camera,
 Traffic lights,
 Traffic light control box,
 Traffic light control card,
 Tape printer,
 Long-range RFID reader,
 4-20 mA (Passive, 16 bit),
 4-20 mA (Active, 16 bit),
 Serial expansion card with four additional
 outputs per card:
 One (1) RS232C
 One (1) RS232C/485 selectable
 One (1) RS232/20mA selectable
 One (1) RS485,
 PLC interfaces:
 PROFIBUS-DP, Modbus-RTU, Modbus-TCP,
 DeviceNet, ControlNet, Ethernet/IP
 Approvals NTEP CC# 10-089; MC# AM-5805, ETL

Your Fairbanks Scales Authorized Representative is:

Call toll-free for the representative nearest you:

(800) 451-4107

Call between 8:00 a.m. – 5:00 p.m. Central Time

Corporate Offices: 821 Locust • Kansas City, MO 64106 • (816) 471-0231

Internet Address: <http://www.Fairbanks.com>

