

FAIRBANKS® S C A L E S



SILVERBACK™ INDUSTRIAL SCALE PLATFORMS

Virtually indestructible and highly accurate carbon steel weighing platforms designed for non-washdown applications in manufacturing, agriculture, warehousing and recycling. Configure the SilverBack with your analog instrument of choice to create a bench scale perfectly suited for your weighing application and budget.

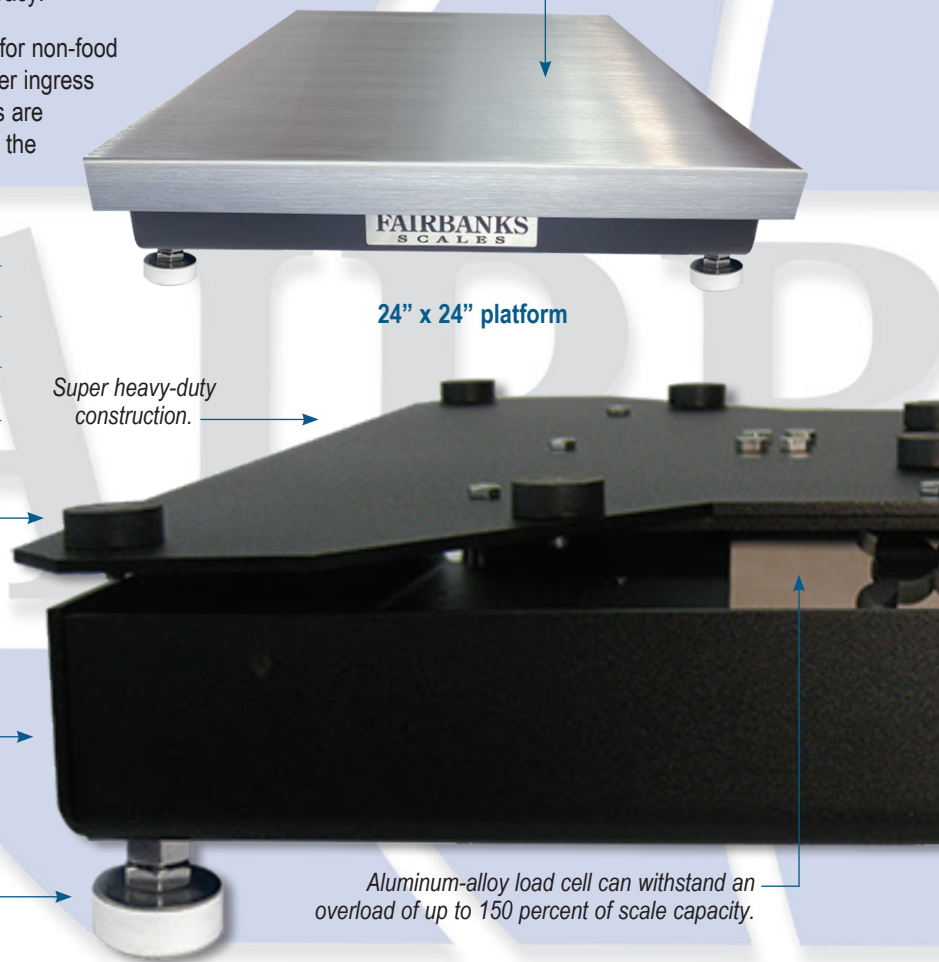
SILVERBACK™ INDUSTRIAL SCALE PLATFORMS

Fairbanks' SilverBack is an incredibly rugged bench scale platform designed for industrial, non-washdown weighing applications. It features a super heavy-duty carbon steel base that has the heft and stability to handle the daily rigors of industrial environments with sustained accuracy.

SilverBack platforms are a reliable and cost-effective solution for non-food grade applications in which the scale doesn't require high water ingress ratings and full stainless construction for washdown. Platforms are sold individually or can be paired with an instrument pillar and the analog instrument best suited for your weighing application.

- Industry's most durable platform design
- Compatible with any analog instrument
- Made in USA with fast lead times
- IP65/IP66 rated load cells
- Competitively priced

SilverBack platforms feature a durable brushed stainless steel shroud that simply lifts off to access the scale base.



24" x 24" platform

Super heavy-duty construction.

Shock-resistant neoprene shroud supports ensure accurate loading anywhere on the platform and help protect the load cell while increasing overall stability.

High impact black powder coat paint resists abuse and corrosion.

Adjustable, rubber leveling feet provide optimal surface grip and stability for accurate weighments.

Aluminum-alloy load cell can withstand an overload of up to 150 percent of scale capacity.

Instrument Pillars



24" pillar

Pillars come in 12" and 24" heights and feature a stainless steel cover that easily lifts off in order to run instrument cables down to the platform connections. This feature allows cabling to be both hidden and protected.

18" x 24" platform

Industry Exclusive!

Tool-Free Pillar Attachment

SilverBack platforms feature a unique snap-in-place pillar mount design that enables pillar attachment without cracking open a tool box. Simply align the pillar prongs with the built-in slots, squeeze, and snap in place.

- Asymetrical platforms feature pillar prong slots along two sides of the base.

Pillar mount fits all Fairbanks instrumentation



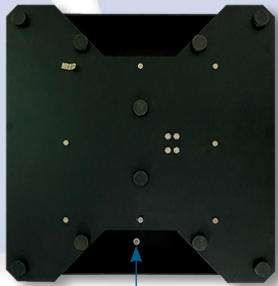
12" pillar

12" x 12" platform

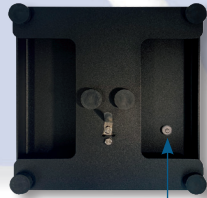
Pillar prongs

Pillar prong slots

■ Rock solid construction for years of operational payback



Top view of SilverBack bench scale base, large and small platform.

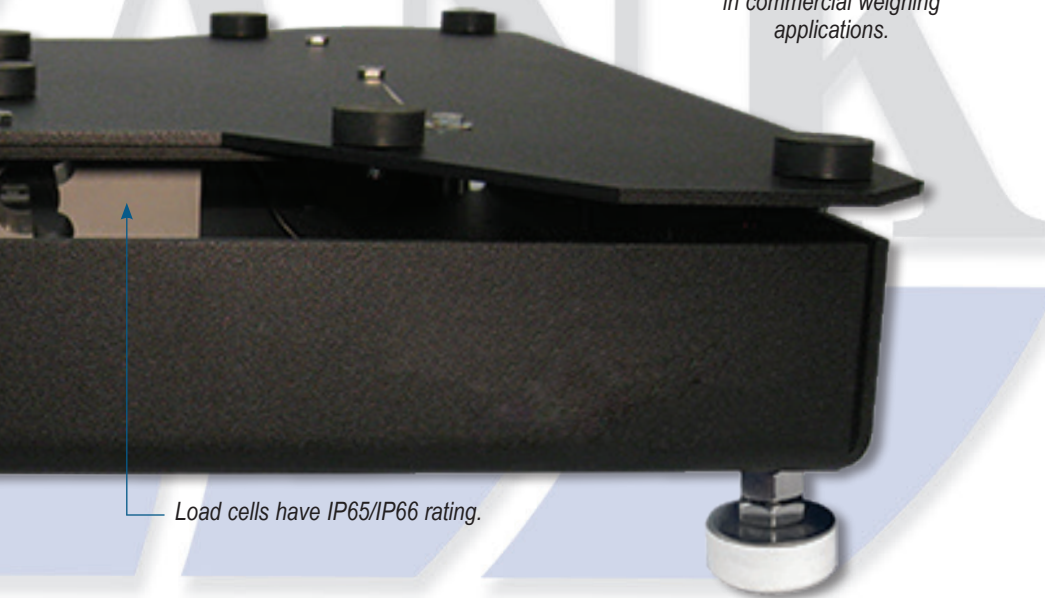


Leveling bubble

The SilverBack's load cell is housed between a rock solid carbon steel lower plate and hefty 4-legged "spider" top plate. This unique design isolates the cell from overloads and shocks, ensures balanced load distribution, and promotes long scale life.



NTEP and Measurement Canada approved for use in commercial weighing applications.



Load cells have IP65/IP66 rating.

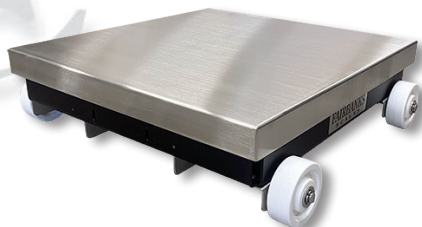
Bench Scale Stands

Sturdy stainless steel construction. Height adjustable and available in two sizes.



Wheel Kit for 24" x 24"

The SilverBack 24" x 24" can be placed on a countertop or converted to a mobile weighing platform by adding a wheel kit accessory.



Applications/Instrumentation

The diversity of industry presents countless non-food grade, non-hazardous applications that require a tough industrial bench scale. Since SilverBack platforms can be paired with any analog instrument, including those produced by other manufacturers, the possibilities to create the ideal weighing solution are endless. Below you'll find the recommended Fairbanks instrument pairing for some common weighing applications.

General Weighing/Parts Counting: FB1200, FB2255



Checkweighing: FB1200 (Basic) NexWeigh (Advanced)



Batching/Filling: FB6000



Automated Labeling/Data Collection: FB4000 with LabelBank Software



SILVERBACK™ INDUSTRIAL SCALE PLATFORMS

Weighing Solutions for the World since 1830



Platforms come in 16 standard size/capacity configurations!

Fairbanks.com

SPECIFICATIONS

Sizes/Capacities

12" x 12"	25 lb (11 kg) or 50 lb (23 kg)
12" x 16"	50 lb (23 kg) or 100 lb (45 kg)
15" x 15"	50 lb (23 kg) or 100 lb (45 kg)
16" x 18"	100 lb (45 kg)
18" x 18"	100 lb (45 kg) or 250 lb (113 kg) or 500 lb (227 kg)
18" x 24"	100 lb (45 kg) or 250 lb (113 kg) or 500 lb (227 kg)
24" x 24"	100 lb (45 kg) or 250 lb (113 kg) or 500 lb (227 kg)

Construction Mild carbon steel base, black powder coat finish; Stainless steel shroud, brushed finish

Excitation voltage 5-12 VDC

Resolution 2,500d (commercial), 5,000d (non-commercial)

Overload 150% FS

Temperature

compensation 14° to 104° F (-10° to 40° C)

Approvals NTEP CC# 21-033, MC# AM-6172

Accessories

Instruments SilverBack platforms are compatible with all Fairbanks Scales analog instruments and most other manufacturers' analog instrumentation.

Instrument pillars 12" (12" x 12", 12" x 16", 15" x 15" models)
24" (16" x 18", 18" x 18", 18" x 24", 24" x 24" models)

Bench scale stands Adjustable-height, two sizes, stainless steel

Load cell

Construction Aluminum alloy, single-ended shear beam

Rated output 2.0 mV/V +/- 0.2

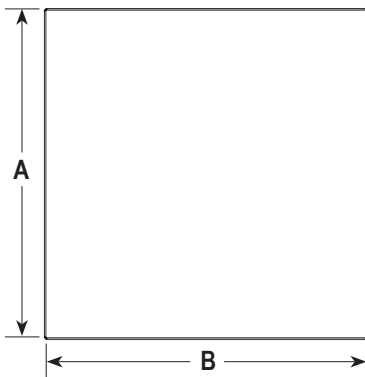
Bridge resistance 350 Ohm

Cable length 9' 10" (12" x 12", 12" x 16", 15" x 15" models)

6' 6" (16" x 18", 18" x 18", 18" x 24", 24" x 24" models)

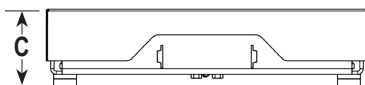
DIMENSIONS

PLATFORMS

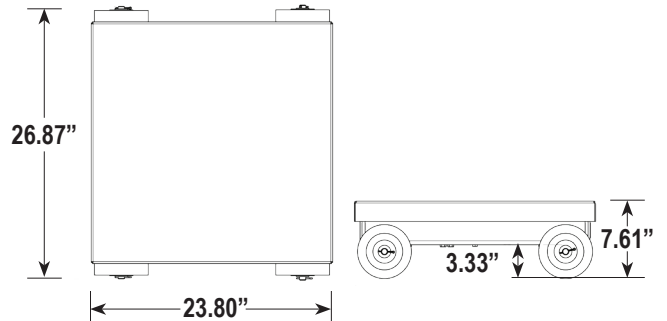


Platform Size	A	B	C
12" x 12"	12"	12"	3.4"
12" x 16"	16"	12"*	3.4"
15" x 15"	15"	15"	3.4"
16" x 18"	18"	16"*	4.3"
18" x 18"	18"	18"	4.3"
18" x 24"	24"	18"*	4.8"
24" x 24"	23.8"	23.8"	5.5"

* For configuration versatility, instrument pillar mounting connectors are located along both the A and B dimension on asymmetrical platforms.



WHEEL KIT FOR 24" X 24" PLATFORM



INSTRUMENT PILLARS

Model #	Height (Without foot)	Depth (Mounting tabs to rear)	Width (Exterior to exterior)	Gap* (See below)
38323	12.49"	5"	5.58"	1.25"
38325	24.64"	5"	5.58"	1.50"
38379*	24.64"	5"	5.58"	1.50"

* This measurement is the gap or space between the back edge of the weighing platform and the front of the pillar. The "gap" helps accommodate box/product placement on the platform.

* Pillar exclusively for the 24" x 24" platform.

Your Fairbanks Scales Authorized Representative is:

Call toll-free for the representative nearest you:

(800) 451-4107

Call between 8:00 a.m. – 5:00 p.m. Central Time

Corporate Headquarters: 6800 W. 64th Street, Overland Park, Kansas 66202

(816) 471-0231 Internet Address: <http://www.Fairbanks.com>

