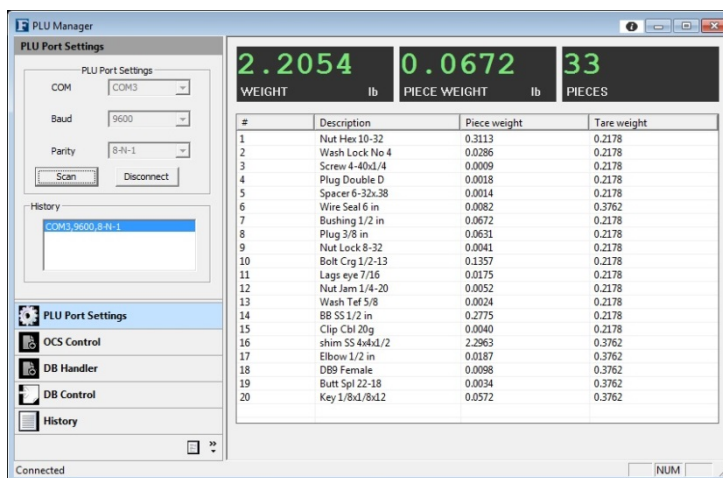




Instruction Manual

PLU DATABASE MANAGER OMEGA SERIES COUNTING SCALE





Disclaimer

Every effort has been made to provide complete and accurate information in this manual. However, although this manual may include a specifically identified warranty notice for the product, Fairbanks Scales makes no representations or warranties with respect to the contents of this manual, and reserves the right to make changes to this manual without notice when and as improvements are made.

Fairbanks Scales shall not be liable for any loss, damage, cost of repairs, incidental or consequential damages of any kind, whether or not based on express or implied warranty, contract, negligence, or strict liability arising in connection with the design, development, installation, or use of the scale.

Trademarks

All other product names mentioned herein are used for identification purpose only and may be trademarks and/or registered trademarks of their respective companies.

© Copyright Fairbanks Scales, 2015

This document contains proprietary information protected by copyright. All rights are reserved; no part of this manual may be reproduced, copied, translated or transmitted in any form or by any means without prior written permission of the manufacturer.

Amendment Record

PLU Database Manager Omega Series Counting Scale

Instruction Manual Document 51350

Manufactured by **Fairbanks Scales**
821 Locust St.
Kansas City, MO 64106

Created	04/15	
Revision 1	04/15	Released document.
Revision 2	05/15	Database information “Description” note

Table of Contents

SECTION 1: INSTALLING THE PLU MANAGER	6
1.1. Introduction.....	6
SECTION 2: PLU MANAGER USER GUIDE	9
2.1. Main Window	9
2.2. PLU Port Setting.....	10
2.3. OCS Control	11
2.4. DB Handler.....	12
2.5. DB Control.....	13
2.6. History and Log pages.....	14
2.7. Database Window	15

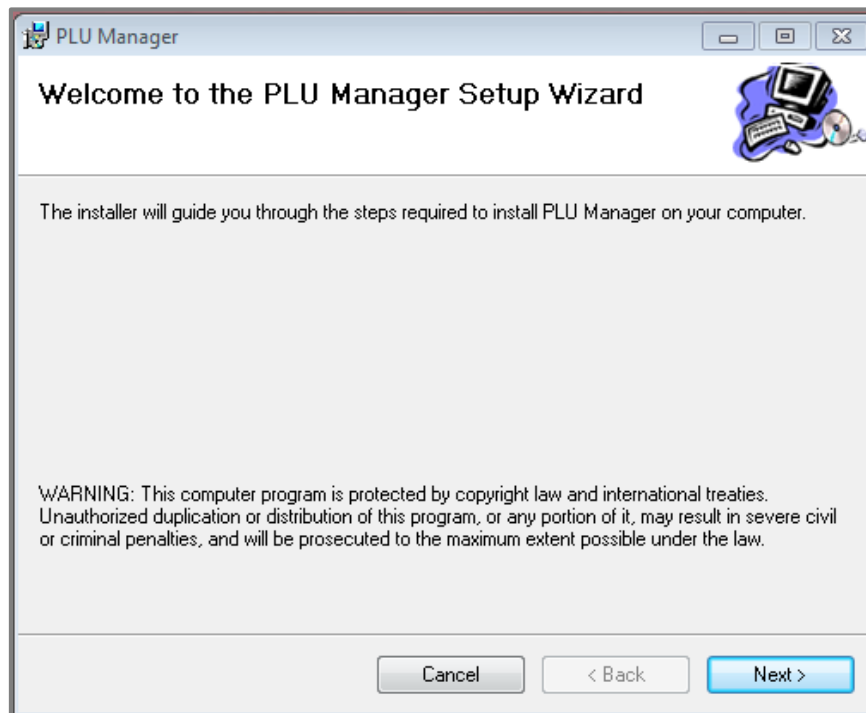
SECTION 1: Installing the PLU Manager

1.1. Introduction

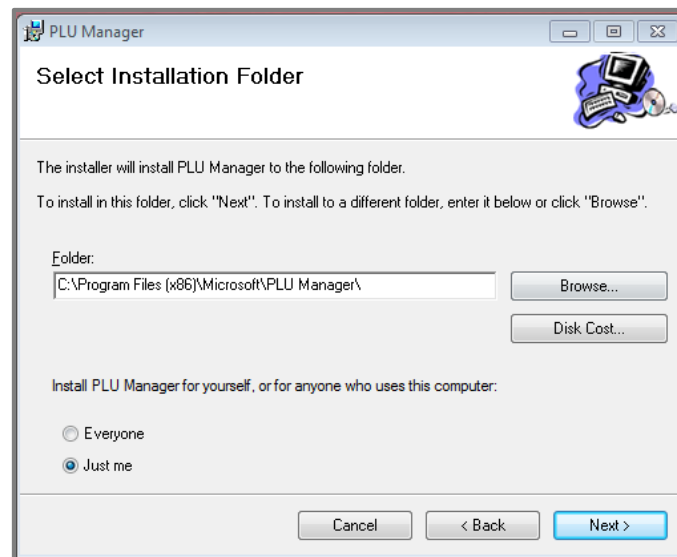
1. Once the **.msi** file has been downloaded, double-click the **Setup.msi** file icon.



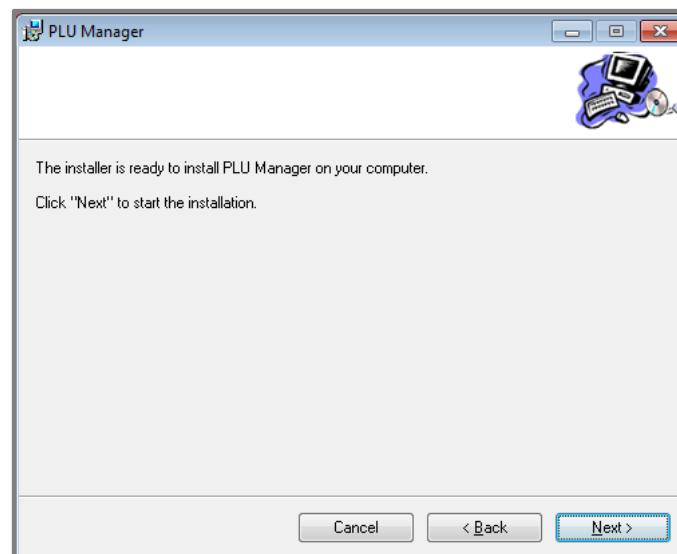
2. The **Welcome** window will be displayed. Click the **Next** button.



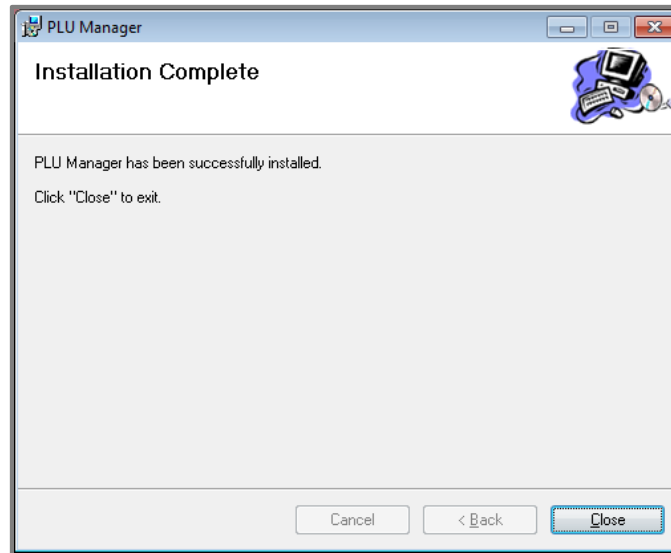
3. The **Select Installation Folder** window is displayed. You can choose where to install the program or use the default locations (recommended). Click **Next**.



4. On the next screen, click **Next** again to install PLU Manager on your computer.



5. You may get a prompt asking you to confirm the installation of this unknown program. If so, click **Yes**. Once installation is complete the following screen is displayed. Click **Close**.



6. The following shortcut icon should be displayed. **Double click the icon** to launch the PLU Manager program.



Note: Throughout the rest of this manual, "**OCS**" will be used instead of "Omega Counting Scale" and "**PLU**" or "**PLUM**" will be used for the program name.

SECTION 2: PLU Manager User Guide

2.1. Main Window

After installing the PLU manager software, click **Fairbanks PLU Manager Program** icon from the Desktop. The Fairbanks OCS PLU Manager window will be displayed as shown below.

PLU Port Setting	Select the serial port to connect to the OCS.
OCS Control	Read data from or write data to the OCS. Tare or zero the weight on OCS.
DB Handler	Go to specific page and search PLU data.
DB Control	Export PLU data to a .csv file. Import PLU data to the PLU Manager from a .csv file.
History	View software activity log.
Log	View transaction results.

PLU Manager

PLU Port Settings

PLU Port Settings

COM: COM3

Baud: 9600

Parity: 8-N-1

Scan Disconnect

History

COM3,9600,8-N-1

PLU Port Settings

OCS Control

DB Handler

DB Control

History

Connected

2.2054
WEIGHT lb

0.0672
PIECE WEIGHT lb

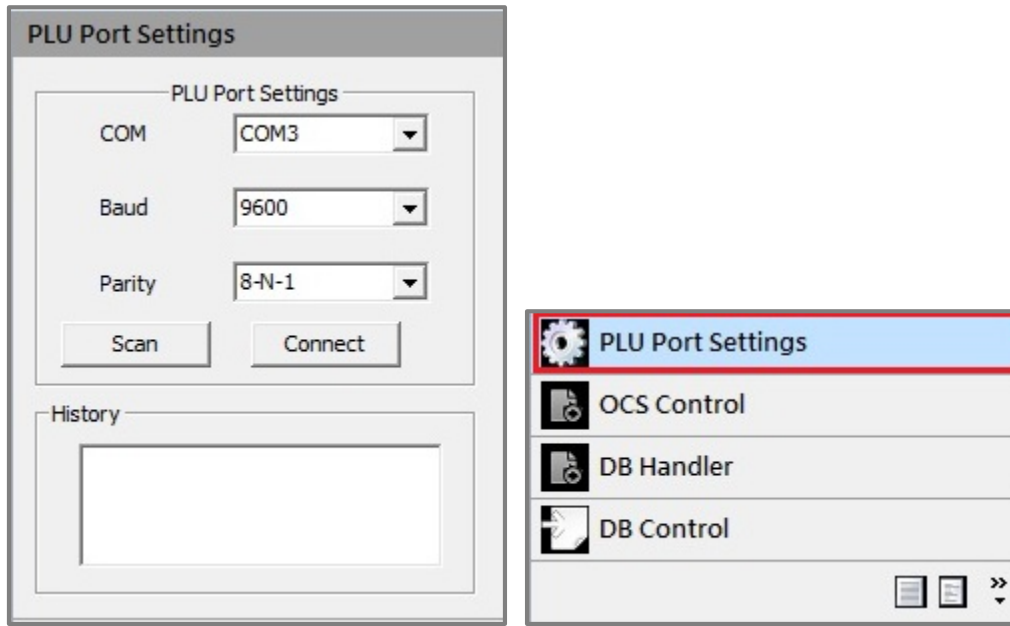
33
PIECES

#	Description	Piece weight	Tare weight
1	Nut Hex 10-32	0.3113	0.2178
2	Wash Lock No 4	0.0286	0.2178
3	Screw 4-40x1/4	0.0009	0.2178
4	Plug Double D	0.0018	0.2178
5	Spacer 6-32x.38	0.0014	0.2178
6	Wire Seal 6 in	0.0082	0.3762
7	Bushing 1/2 in	0.0672	0.2178
8	Plug 3/8 in	0.0631	0.2178
9	Nut Lock 8-32	0.0041	0.2178
10	Bolt Crg 1/2-13	0.1357	0.2178
11	Lags eye 7/16	0.0175	0.2178
12	Nut Jam 1/4-20	0.0052	0.2178
13	Wash Tef 5/8	0.0024	0.2178
14	BB SS 1/2 in	0.2775	0.2178
15	Clip Cbl 20g	0.0040	0.2178
16	shim SS 4x4x1/2	2.2963	0.3762
17	Elbow 1/2 in	0.0187	0.3762
18	DB9 Female	0.0098	0.3762
19	Butt Spl 22-18	0.0034	0.3762
20	Key 1/8x1/8x12	0.0572	0.3762

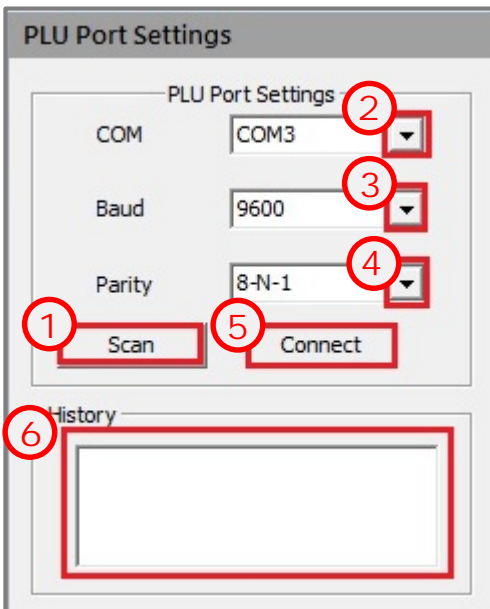
NUM

2.2. PLU Port Setting

Before you start the program, make sure the connection between the computer and OCS (COM Port 1) is done with a crossover serial cable (such as P/N 19634) and then configure the serial setting to match the Omega Counting Scale.



Follow the steps below to configure PLU Port Settings.

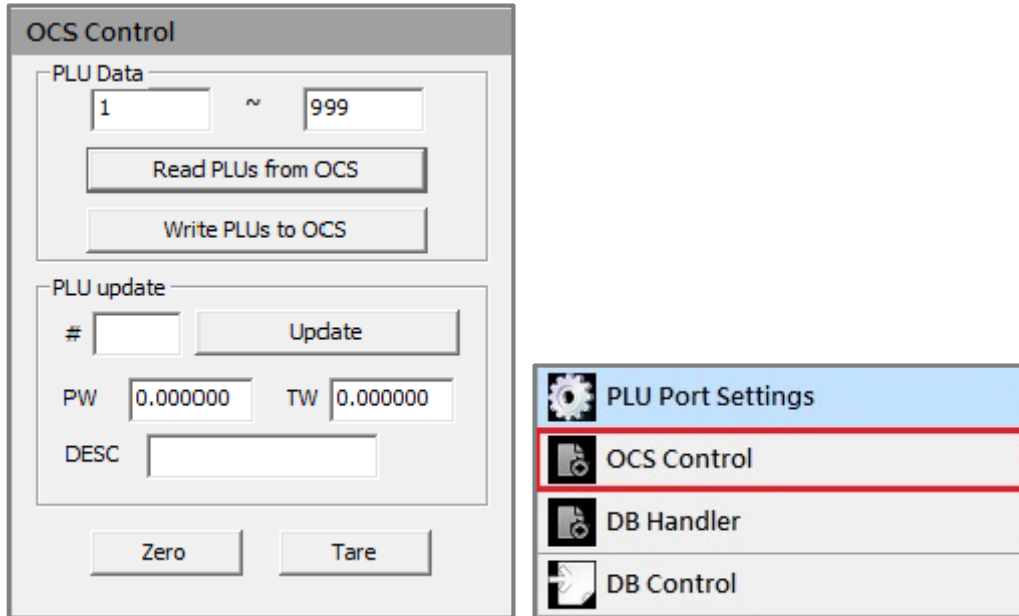


1. Scan the available COM port. PLU Manager will search available COM ports in your computer.
2. Select the COM port.
3. Select the Baud rate.
4. Select the Parity.
5. Click Connect to establish connection with the OCS.
6. The setting will be saved in the dropdown list if the connection was successful.

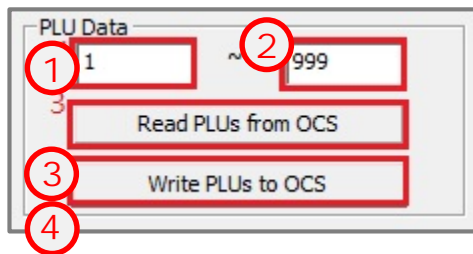
Note: Typical baud and parity settings will be 9600, 8-N-1.

2.3. OCS Control

When the connection is established, we can continue, using the OCS Control page.



1. Read and write PLU data:



- 1) Fill in the first and last
- 2) PLU numbers.
- 3) Click "Read PLUs from OCS" button to load PLU data from OCS into the PLU manager.
- 4) Click "Write PLUs to OCS" button to write PLU data to OCS from the PLU manager.

Note: Be specific on the data range you actually need. Reading or writing to 999 data points can be time-consuming.

2. Update PLU

- Fill the PLU #, PW (Piece Weight), TW (Tare Weight), and description.

#	Description	Piece weight	Tare weight	Unit
1	Lich	0.000	0.00000	lb
2		0.000	0.00000	lb

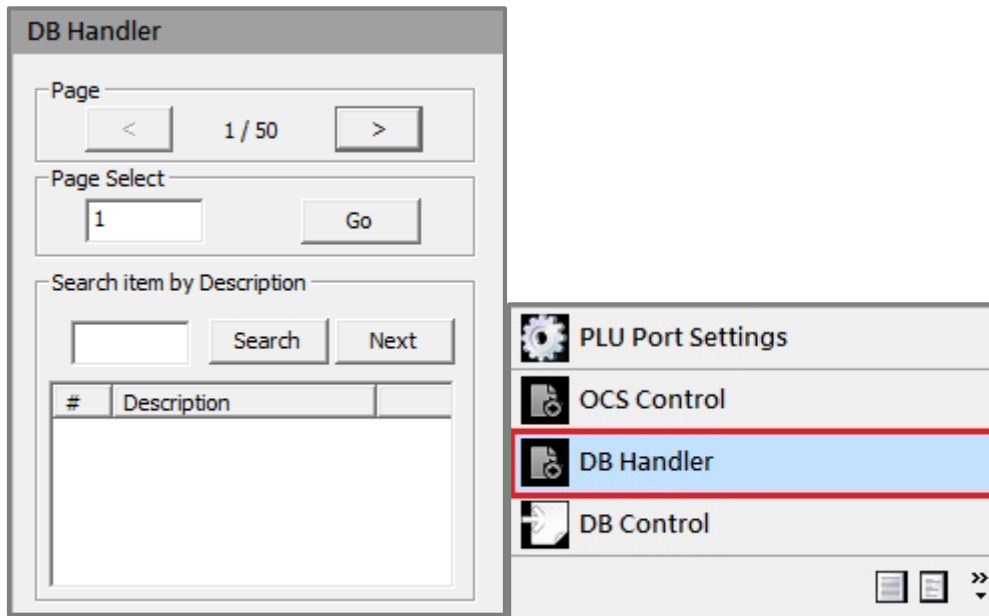
- Double click the # in main area will load the PLU data into these fields.
- Click the **Update** button to update weight data to the specific PLU #.

3. Zero and Tare

Click the **Zero** button to zero the weight on OCS. :Click the **Tare** button to tare the weight on the OCS.

2.4. DB Handler

Use DB Handler to go to a specific page of PLU database or search for a PLU description.

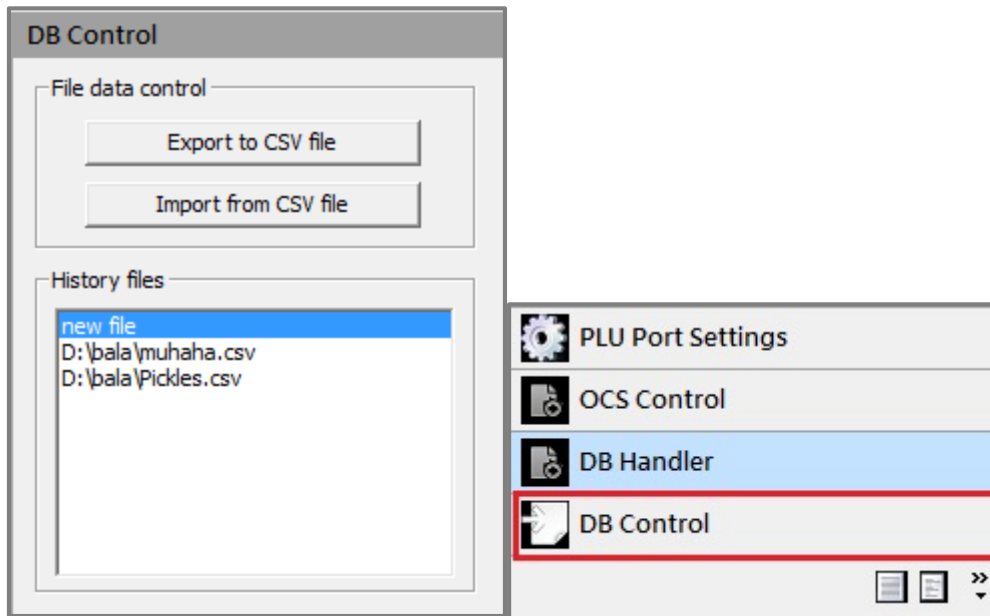


The PLUM database contains 1000 PLUs. There are 50 pages and each page contains 20 PLU data.

1. Click **<** and **>** to toggle between pages..
2. Enter the page number and click **Go** to display the specific page.
3. Enter the description and click the **Search** button to look for specific items in the database. Click the **Next** button to go to the next item in the database. (Only Description) The Search result will be listed in the box below. Click any item in the result list, the selected PLU# will be highlighted and displayed.

2.5. DB Control

The PLUM can export data to a .csv file or import data from a .csv file for easy management.







Export to a .csv file	If the user is exporting the data to a new file, select “new file” in the History files list and click Export to CSV File . A “Save As” box will pop up and the user can save the file under a new file name. The user can also export to an existing file name in the History files list and overwrite the old file.
Import from a .csv file	If the user is importing the data from a new file, select “new file” in the History files list and click Import from CSV file . An “Open File” Dialogue box will pop up and the user can select the file to import. The user can also import from an existing file in the History files list.
History files	History file list shows the .csv files.

2.6. History and Log pages

These two pages are the record of transaction.

History	
Action	time

Log	
Result	Msg

	PLU Port Settings
	OCS Control
	DB Handler
	DB Control
	Log
	History

← The **Log** Page displays activity results.

← The **History** Page displays activity history.

2.7. Database Window

<div> <div>88888888</div> <div>88888888</div> <div>88888888</div> </div>				
<div> <div>WEIGHT</div> <div>lb</div> <div>PIECE WEIGHT</div> <div>lb</div> <div>PIECE</div> </div>				
#	Description	Piece weight	Tare weight	Unit
1	Lich	1	0.00000	lb
2		0.000	0.00000	lb
3		0.000	0.00000	lb
4		0.00000	0.00000	lb
5		0.00000	0.00000	lb
6		0.00000	0.00000	lb
7		0.00000	0.00000	lb
8		0.00000	0.00000	lb
9		0.00000	0.00000	lb
10		0.00000	0.00000	lb
11		0.00000	0.00000	lb
12		0.00000	0.00000	lb
13		0.00000	0.00000	lb
14		0.00000	0.00000	lb
15		0.00000	0.00000	lb
16		0.00000	0.00000	lb
17		0.00000	0.00000	lb
18		0.00000	0.00000	lb
19		0.00000	0.00000	lb
20		0.00000	0.00000	lb

1. Weight Information

Weight, Piece Weight and Piece data are displayed. When the connection has been established, the weight and piece data will be synced with the OCS.

<div> <div>88888888</div> <div>88888888</div> <div>88888888</div> </div>		
<div> <div>WEIGHT</div> <div>lb</div> <div>PIECE WEIGHT</div> <div>lb</div> <div>PIECE</div> </div>		

2. Database information

#	Description	Piece weight	Tare weight	Unit
1	Lich	1	0.00000	lb
2		0.000	0.00000	lb
3		0.000	0.00000	lb
4		0.00000	0.00000	lb
5		0.00000	0.00000	lb
6		0.00000	0.00000	lb
7		0.00000	0.00000	lb
8		0.00000	0.00000	lb
9		0.00000	0.00000	lb
10		0.00000	0.00000	lb
11		0.00000	0.00000	lb
12		0.00000	0.00000	lb
13		0.00000	0.00000	lb
14		0.00000	0.00000	lb
15		0.00000	0.00000	lb
16		0.00000	0.00000	lb
17		0.00000	0.00000	lb
18		0.00000	0.00000	lb
19		0.00000	0.00000	lb
20		0.00000	0.00000	lb

There are five fields in DB info.

#	The PLU number cannot be edited.
Description	<p>This field is the PLU description.</p> <ul style="list-style-type: none"> • Default value is empty. • Maximum length is 15. <p>Note: When entering data into a description field, the following characters CANNOT be used:</p> <ul style="list-style-type: none"> “ Quotation mark # Hashtag ‘ Apostrophe , Comma = Equals sign
Piece weight	<p>This field is the piece weight.</p> <ul style="list-style-type: none"> • Default value is 0.00000. • Maximum length is 7. • Click the Enter key after changing this value. • If you do not want to change this value, click another cell or press the Esc key.
Tare weight	<p>This field is the tare weight.</p> <ul style="list-style-type: none"> • Default value is 0.00000. • Maximum length is 7. • Click the Enter key after changing this value. • If you do not want to change this value, click another cell or press the Esc key.
Unit	The unit value of this PLU. There are only two types, lb and kg. Click this field to change from lb and kg and back.



Fairbanks Scales, Inc.
821 Locust St.
Kansas City, MO 64106
www.fairbanks.com

51350

PLU MANAGER FOR MEGA COUNTING SCALES

INSTRUCTION MANUAL