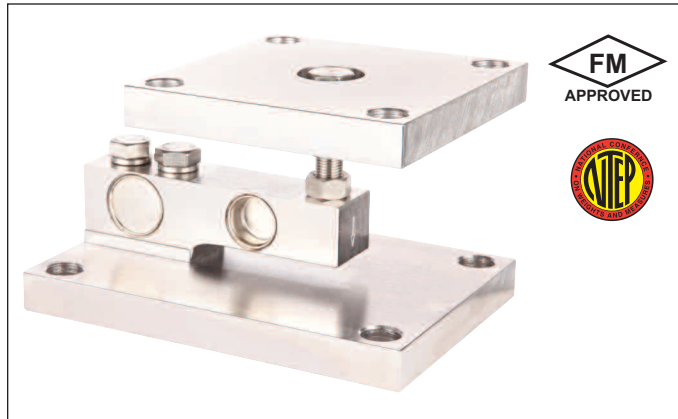


FAIRBANKS®

OMNICELL® 9106 FB SERIES WEIGHING ASSEMBLY



Fairbanks' Omnicell 9106 FB Series is a compact, single-ended shear beam weighing assembly designed for superior performance in medium weight range applications that require protection from extreme hostile environments.

APPLICATIONS

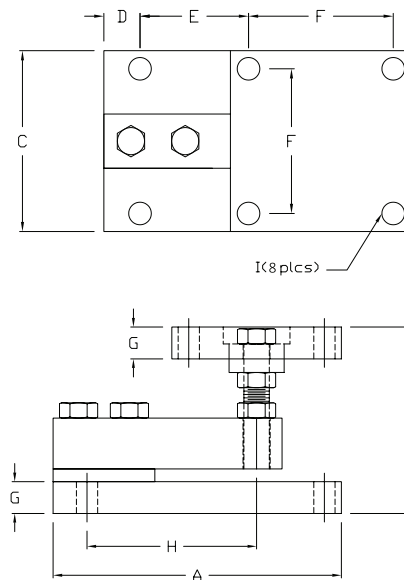
- Batching
- Mixing
- Blending
- High accuracy
- Process Reactors
- Tanks
- Bins
- Hoppers
- Conveyor / In-Motion
- Hostile Environments

FEATURES

- Medium weight range Omnicells — 1,000 to 10,000 lb capacity models.
- Integral height adjustment of receiver plate for easy load balancing.
- Assembly allows for thermal expansion/contraction.
- High signal output, well-suited to high deadload situations.
- Articulating mounting plate accommodates non-planar misalignments of up to four degrees.
- Stainless steel, welded shear beam load cell.

PERFORMANCE SPECIFICATIONS

Capacities	1,000 to 10,000 lbs.
Mount Construction	Stainless steel
Load cell:	
Full Scale Output (FS).....	3.0mV/v ± 0.25%
Combined Error.....	≤ 0.03% FS
Non-Linearity.....	≤ 0.03% FS
Hysteresis.....	≤ 0.02% FS
Creep Error (20 min.)	≤ 0.03% FS
Compensated Temperature.....	14° F to 104° F (-10° C to 40° C)
Excitation Voltage	5-15 VDC
Overload	Safe = 150%, Ultimate = 300%
Sideload.....	Safe = 100%
Rejection ratio	500:1
Bridge Resistance.....	350 ohms nominal
Construction	Stainless steel 17-4 PH
Sealing.....	IP67
Cable.....	20 ft., polyurethane
Approvals.....	NTEP CC# 10-056, Factory Mutual



CABLE COLOR CODE
GREEN=+EX
BLACK=-EX
WHITE=+SIG
RED=-SIG

DIMENSIONS (in inches)

Capacity	A	B	C	D	E	F	G	H	I
1,000 lbs to 5000 lbs	7.12	4.0 - 4.5	5.00	0.56	2.00	4.00	0.70	4.00	0.63
10,000 lbs	8.50	5.0 - 5.5	5.00	0.75	3.00	4.00	1.02	5.00	0.63

QuickFacts™

Models and specifications subject to change without notice.
Printed in the USA. © Fairbanks Scales Inc.

Call toll-free for the Fairbanks representative nearest you:

(800) 451-4107

Internet Address: <http://www.Fairbanks.com>