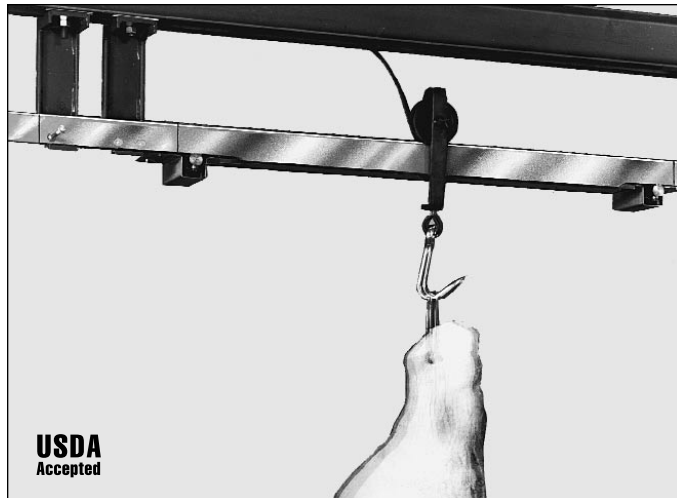


FAIRBANKS®

MODEL H21-5260 UNIRAIL SCALES



This easy-to-install stainless steel scale is used for weighing products on an overhead monorail system.

EASY INSTALLATION

The unirail scale is a self-contained unit which is supported by an existing rail system. The scale is fully assembled and tested at the factory. The installation is simply a matter of cutting the rail, inserting the scale and attaching it to the rail hangers. No additional overhead structural supports are needed.

DESIGN SIMPLICITY

The unirail has no moving parts so maintenance is significantly reduced. The rigid construction, combined with stainless steel structural components and watertight load cells, provides a scale with an extraordinary long service life without wear or corrosion.

ACCURATE

The unirail scale's single unit concept adds accuracy by eliminating multiple support points required. This scale can tolerate minor deflection without affecting accuracy because it electronically dampens the effect of vibrations.

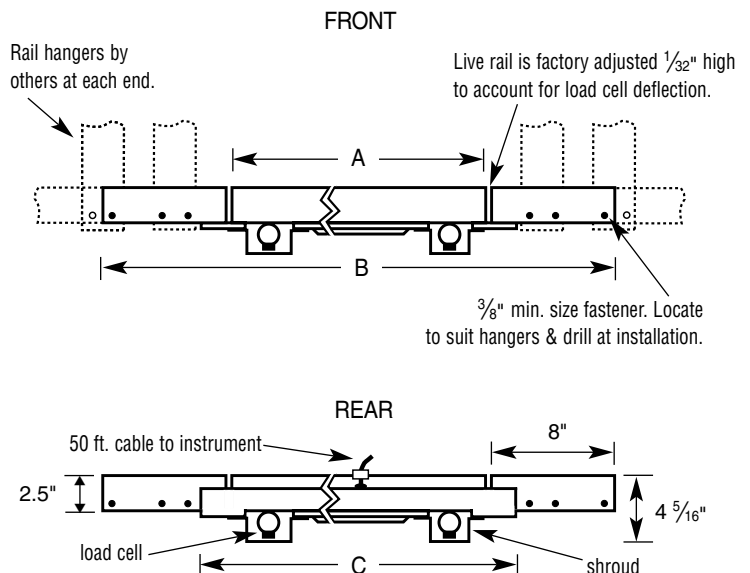
MEETS P & S REGULATIONS

The H21-5260 unirail scale meets USDA Packers and Stockyards Administration regulations, and when teamed with an appropriate Fairbanks instrument, meets requirements which specify that electronic monorail scales must have 0.1 lb. tare setting capability, with a minimum graduation of 0.5 lb.

SPECIFICATIONS

Model Numbers	See chart below
Capacity	1500 lbs. total; 1250 lbs. per roller (max.)
Graduation Size	0.5 lb.
Live Rail Length	18, 24, 30, 36 and 50 inches
Material	Type 304 stainless steel, except for watertight load cells
Load Cells	Two precision beam cells, @ 1000 lb. capacity
Indicator	H90-5200A

DIMENSIONS (see chart below)



Model Number	A	B	C
H21-5260-20	50"	66 ³ / ₁₆ "	54 ¹¹ / ₁₆ "
H21-5260A-20	18"	34 ³ / ₁₆ "	22 ¹¹ / ₁₆ "
H21-5260B-20	24"	40 ³ / ₁₆ "	28 ¹¹ / ₁₆ "
H21-5260BC-20	30"	46 ³ / ₁₆ "	34 ¹¹ / ₁₆ "
H21-5260D-20	36"	52 ³ / ₁₆ "	40 ¹¹ / ₁₆ "
H21-5260x-0	50"	66 ³ / ₁₆ "	54 ¹¹ / ₁₆ "