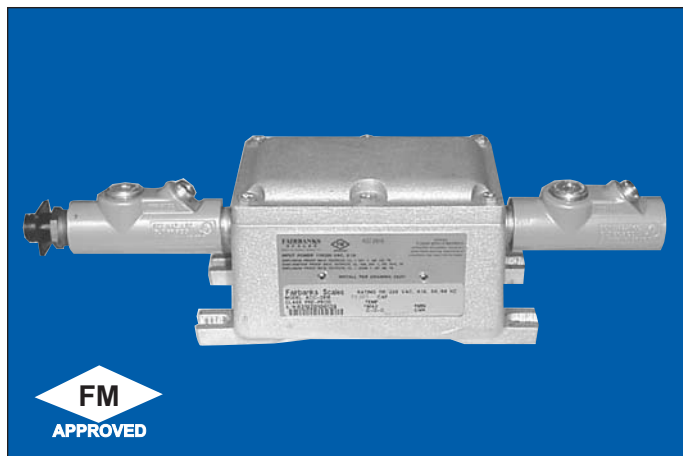


FAIRBANKS®

2816 HAZARDOUS AREA DIRECT POWER SUPPLY



Fairbanks' 2816 Hazardous Area Direct Power Supply provides intrinsically safe power in hazardous environments.

INTRINSICALLY SAFE

Designed to be used in conjunction with Fairbanks' 2800 Series digital indicators, the 2816 can supply power to two indicators simultaneously. The pre-wired accessory cables can be directly connected within a hazardous environment — up to 50 feet away from each instrument. Operating on AC power, the 2816 eliminates the need for a battery and battery charger.

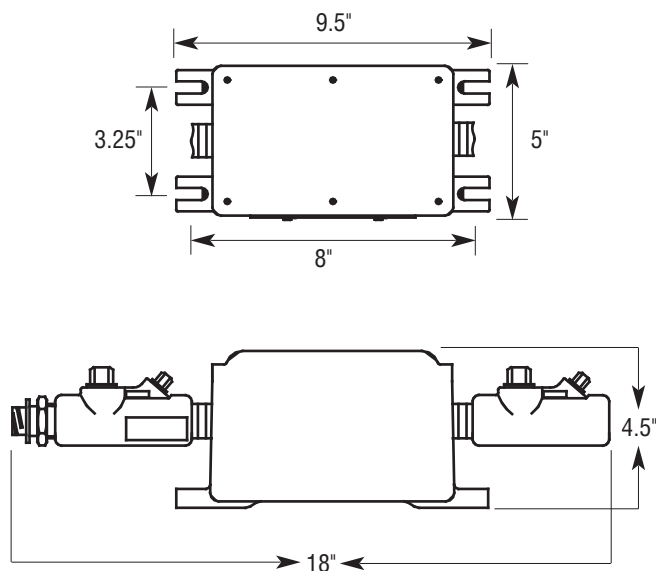
BUILT TO LAST

Fairbanks' 2816 Hazardous Area Direct Power Supply enclosure features a cast alloy design NEMA 7/9 rated junction box. The electrical power moves through the thick walled, rigid metal conduit via terminal strip connections inside the explosion-proof enclosure. As an added safety measure, the conduit connection is completely sealed with a sealing compound.

SPECIFICATIONS

Model Number	2816
Enclosure	Cast alloy design; junction box is NEMA 7/9
Humidity	0 to 94% relative humidity
Power Specifications	120/240 VAC, 50/60 Hz, fused AC input & DC output
Accessories	2817 (10' length cable); 2818 (25' length cable); 2819 (50' length cable); 2820 "Y" cable
Approval	Factory Mutual approved for: Explosion proof W/I.S. outputs, CL. I, DIV. I, GP, CD, T6; Dust-ignition proof W/I.S. outputs, CL. II/III, DIV. I, GP, EFC, T6; Explosion proof W/I.S. outputs CL. I, ZONE I, GP, IIB, T6

DIMENSIONS



QuickFacts™

Models and specifications subject to change without notice.
Printed in the USA. © Fairbanks Scales Inc.

Call toll-free for the Fairbanks representative nearest you:
(800) 451-4107