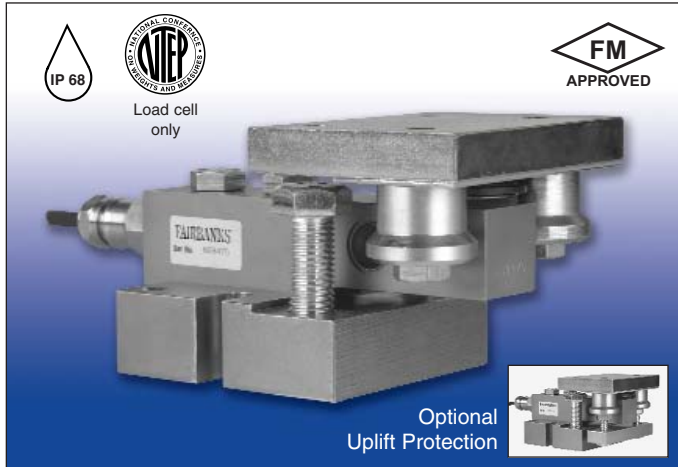


# FAIRBANKS®

## OMNICELL® 9112 SERIES WEIGHING ASSEMBLY



Fairbanks' Omnicell 9112 Series' weighing assembly is a compact, low profile weighing assembly designed for superior performance in light-to-extreme weight ranges and hostile environments.

### APPLICATIONS

- Tanks
- Bins
- Vessels
- Process Control
- Mixers/Blenders
- Batching vessels
- Silos
- Hoppers
- Conveyors

### FEATURES

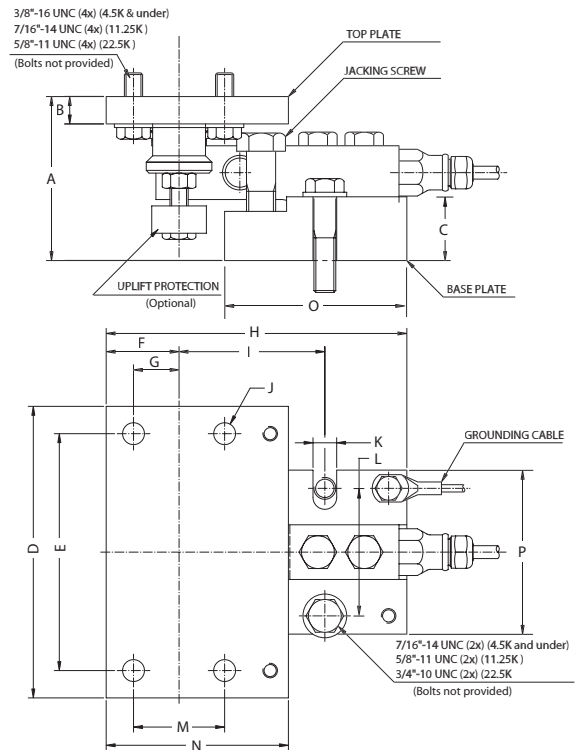
- Capacity range of 1125 to 22,500 lbs.
- Slider plate compensates for thermal expansion.
- Mount assembly has built-in, two-directional bumpers.
- Low profile design for easy installation.
- "True" hermetically sealed load cells have the highest standard for environmental protection.
- Load cell constructed of 17-4 stainless steel for high caustic protection.
- Mounts available in 304 stainless and zinc plated steel.
- Patented MV/V/Ohm calibration for ease of installation.
- Extremely tight calibration tolerances.
- Factory Mutual approved for hazardous applications.
- NTEP approved load cell — all models except 22.5K.

### PERFORMANCE SPECIFICATIONS

Capacities	1125 to 22,500 lbs
Mount Construction	304 stainless steel; zinc plated mild steel
Load Cell:	
Full Scale Output (FS)	2.0mV/v ± 0.05%
Combined Error	≤ 0.03% FS
Non-Linearity	≤ 0.02% FS
Hysteresis	≤ 0.02% FS
Creep Error (30 min.)	≤ 0.05% FS
Compensated Temperature	14° F to 104° F (-10° C to 40° C)
Excitation Voltage	5-15 VDC
Overload	Safe = 150%; Ultimate = 300%
Sideload	Safe = 100%
Bridge Resistance	1000 ohms nominal
Construction	Stainless Steel 17-4 PH
Cable	20 ft., polyurethane
Approvals	Factory Mutual; NTEP CC #97-079 (except 22.5K model)

### CABLE COLOR CODE

**GREEN=+EX** **BLACK=-EX** **WHITE=+SIG** **RED=-SIG**



**DIMENSIONS (inches)** Corresponds to drawing at right.

Capacities (lbs)	A	B	C	D	E	F	G	H	I	J	K	L	M	N	O	P
1.125K, 2.25K, 4.5K	3.54	0.59	1.18	6.30	5.12	1.57	0.98	6.50	3.15	0.47(4x)	0.47	2.76	1.97	3.94	3.94	3.54
11.25K	5.12	0.79	1.97	7.87	6.69	2.17	1.38	8.47	4.13	0.56(4x)	0.63	3.94	2.76	5.12	5.12	4.72
22.50K	6.30	0.98	1.97	10.24	8.67	2.17	1.38	10.24	5.31	0.73(4x)	0.79	5.12	2.76	5.91	6.30	5.91

### QuickFacts™

Models and specifications subject to change without notice.  
Printed in the USA. © Fairbanks Scales Inc.

Call toll-free for the Fairbanks representative nearest you:

**(800) 451-4107**

Internet Address: <http://www.Fairbanks.com>